



# ENOVIA V6 – Oracle® Agile EDM (e6) Integration



The efficient administration of product data and so the support of engineering processes has become a critical success factor for manufacturing companies today. This also includes the exchange of data between PDM/ PLM and CAD systems.

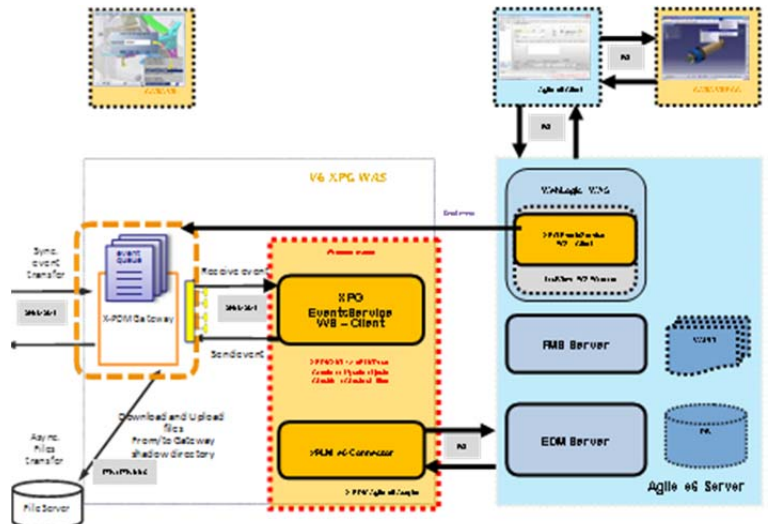
XPLM has leveraged their long-term experience in building effective CAD, PLM/ERP integrations to offer a next generation connector for ENOVIA V6 to Oracle Agile EDM.

## Product Information:

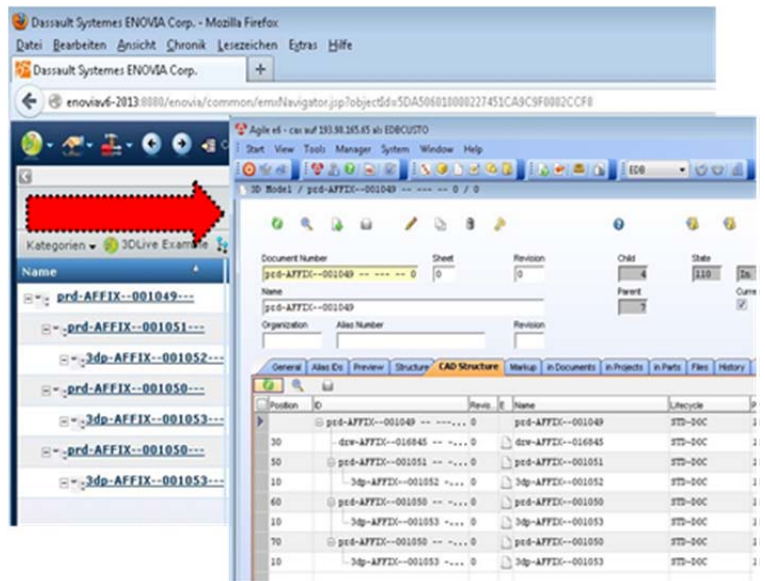
The CATIA V6 Integration for Oracle Agile EDM (e6) offers CATIA users an effective and intuitive integration. Data and structures of both Oracle Agile EDM (e6) and CATIA V6 are linked to each other - providing the ability for bi-directional exchange of documents, CAD files, BOMs, parts (material masters), classification, item status and more. Robust customization capabilities are provided yielding lower support and maintenance costs.

## Integration Capabilities

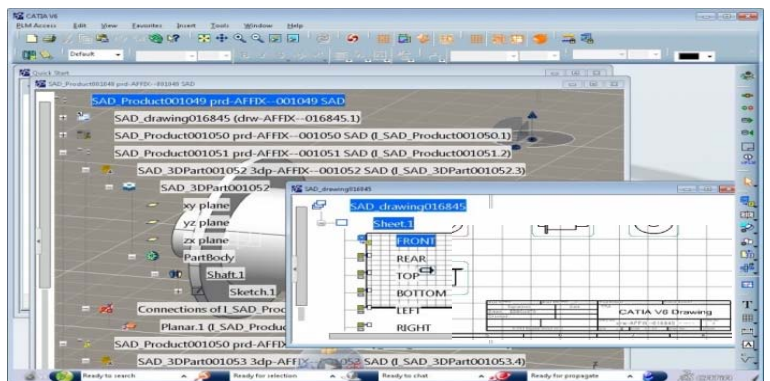
- › Document & File Management
- › Management of Complex CAD Structures
- › Management of Configurations
- › Creation of Item Masters and BOM
- › Asynchronous and bidirectional data transfer of
  - › CAD meta data, single parts, assemblies, drawings
  - › structure data, BOMs (Use case "Product Structure Synchronisation")
- › Flexible configuration and options for language support
- › Titleblock mechanism
- › Generation of 2D graphic formats
- › Logging and controlling of all transfer activities
- › User-friendly and very easy handling of the integration



X-PDM Mechanismus / Transfer to Oracle Agile EDM (e6)



ENOVIA V6 – Oracle® Agile EDM (e6) Object and structure mapping





### CATIA V6 Add-on

Provides functions inside of CATIA V6 to access Oracle Agile EDM information like:

- > Product Property Exchange
- > TIFF file generation + Checkin in Oracle® Agile EDM (e6)
- > Titleblock mechanism

### Key Benefits

- > Dialogs and features can be enhanced and configured specifically for users
- > COM Automation Support (+ VB Script, Java Script)
- > XML definition enables creation and configuration of new integration objects

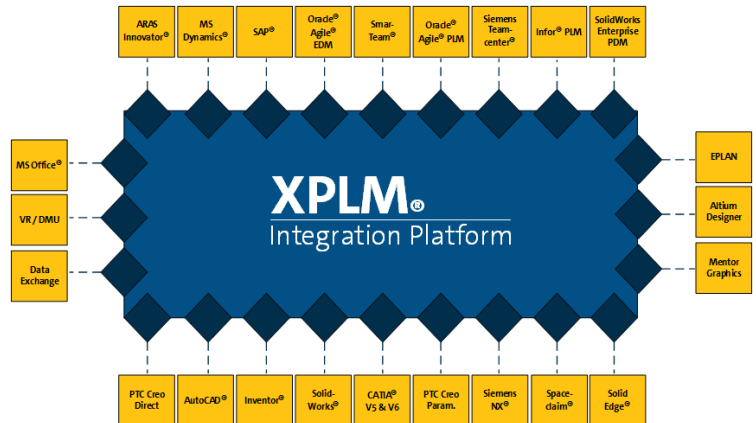
### System Requirements

- > ENOVIA V6: 2013x (with X-PDM Gateway)
- > XPLM: V 1.0.4 or later
- > e6 Connector: V 1.1.0 or later
- > Agile 6: 6.1 or later

Windows 7/Windows Server 2003

### XPLM Integrationsplattform

The XPLM Integration Platform provides its users efficient and robust CAx and PDM integrations. The XPLM Integration Platform supports integration with many PDM/PLM systems, CAD systems, ERP systems, Visualization systems, ECAD systems and MS-Office.



XPLM is an Oracle Gold Partner, providing superior CAD and PLM integration solutions for Agile 9 systems. Together with Oracle, XPLM established the “Joint Competency Center for CAD Integrations” (J2CI).



### About XPLM

XPLM is a German IT company with subsidiaries in Switzerland and the US. XPLM develops integration solutions between leading PLM, MCAD, ECAD, SysML, ERP, DMU, Publishing, MS Office and data exchange applications. The service portfolio ranges from the analysis and definition of PLM business processes to planning and executing implementations, data migration, training, and operational support. XPLM customers include international companies from the automotive, machine and plant engineering, medical technology, mechanical and electrical engineering, pharmaceutical and chemical process and aerospace industries.

#### Headquarters

XPLM Solution GmbH  
Devrientstraße 5  
01067 Dresden, Germany

Office +49 351 82658-0  
Fax +49 351 82658-88  
Email : marketing@xplm.com

#### Office USA

XPLM Solution, Inc.  
250 Commercial Street, Suite 520  
Worcester, MA 01608 USA

Office +1 508 753-7500  
Fax +1 508 753-7578  
Email : marketing@xplm.com