



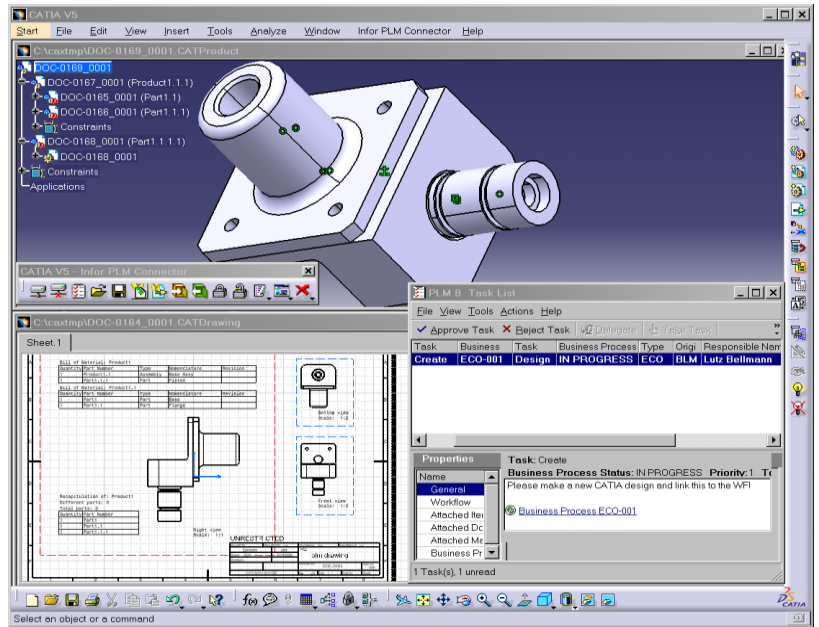
# Infor® PLM Integration for CATIA® V5



The efficient administration of product data and so the support of engineering processes has become a critical success factor for manufacturing companies today. This also includes the exchange of data between PDM/ PLM and CAD systems.

## Product Information:

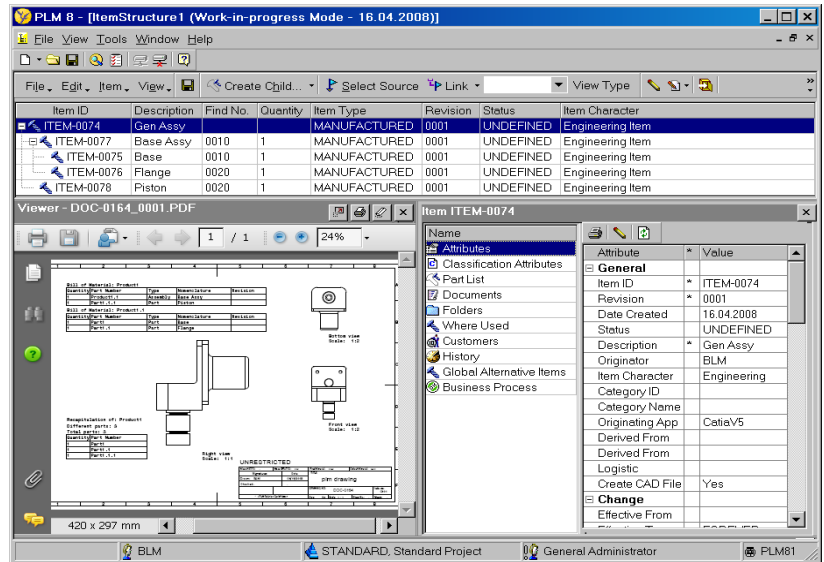
The Infor integration for CATIA V5 offers Aras users an effective and intuitive integration. Data and structures of both Infor and CATIA V5 are linked to each other - providing the ability for bi-directional exchange of documents, CAD files, BOMs, parts (material masters), classification, item status and more. Robust customization capabilities are provided yielding lower support and maintenance costs.



Access to PLM Task List

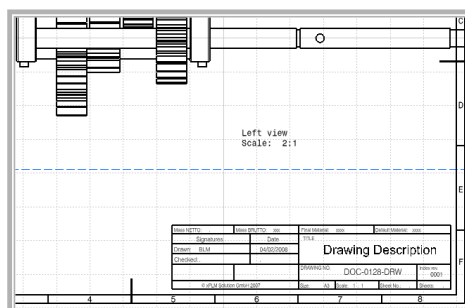
## Integration Capabilities

- › Document & File Management
- › Management of Complex CAD Structures
- › Items & BOM, based on CAD design
- › Workflow and Release Management
- › Check-in and Check-out from CAD
- › Take and Release Ownership
- › Management of Multiple Revisions
- › Save Preview Before Final Saving
- › Search and Load from PDM
- › Bidirectional Exchange of Properties
- › Update PLM-attributes from CAD
- › File Conversion (e.g. Viewables)



## Functions

Metadata and classification properties can be exchanged and updated bidirectional. This enables the fill out of title blocks within drawings. This process can be performed automatically in the background (batch server), triggered by any process or workflow event (e.g. status transition).





### Key Benefits

- › Dialogs and features can be enhanced and configured specifically for users
- › The XPLM Integration Platform can access multiple PLM and ERP sites in parallel
- › Batch processor enables file conversions and configurable bulk transfer operations (e.g. import, export, migration of data)
- › Script-Based Process Definition Language
- › COM Automation Support (VBA Script, Java Script, C#)
- › XML definition enables creation and configuration of new integration objects

### System Requirements

- › Infor PLM: 8.0 – 8.4, Infor PLM10\*
- › CATIA V5: R19- R21
- › Platform: Windows XP, Windows 7, x86, AMD64

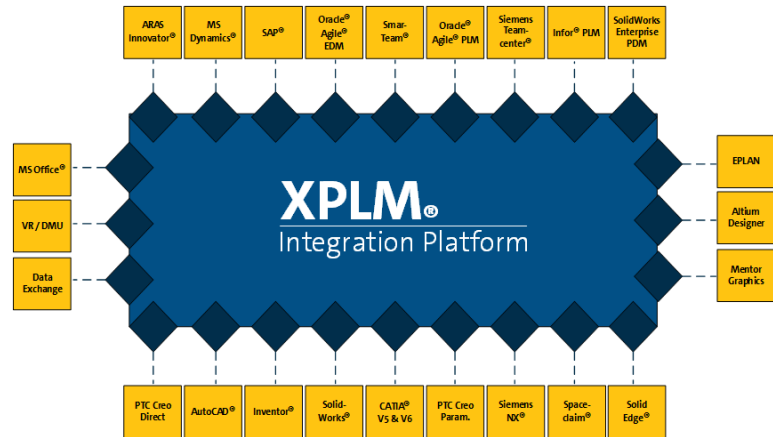
### Supported CATIA Objects

- › CATProduct, CATPart, CATDrawing
- › Design Table
- › CATProcess, CATAnalysis (Version 1.2)



### XPLM Integration Platform

XPLM Integration Platform provides Infor users efficient and robust CAX and PDM integrations. The XPLM Integration Platform supports integration with many PDM/PLM systems, CAD systems, ERP systems, Visualization systems, ECAD systems and MS-Office.



### About XPLM

XPLM is a German IT company with subsidiaries in Switzerland and the US. XPLM develops integration solutions between leading PLM, MCAD, ECAD, SysML, ERP, DMU, Publishing, MS Office and data exchange applications. The service portfolio ranges from the analysis and definition of PLM business processes to planning and executing implementations, data migration, training, and operational support. XPLM customers include international companies from the automotive, machine and plant engineering, medical technology, mechanical and electrical engineering, pharmaceutical and chemical process and aerospace industries.

XPLM Solution is an Infor PLM Solution and Implementation Partner, providing highly qualified complementary solutions and implementation experts with experienced CAD/PLM skills to ensure success.

### Headquarters

XPLM Solution GmbH  
Devrientstraße 5  
01067 Dresden, Germany

Office +49 351 82658-0  
Fax +49 351 82658-88  
www.xplm.com

### Office USA

XPLM Solution, Inc.  
250 Commercial Street, Suite 520  
Worcester, MA 01608 USA

Office +1 508 753-7500  
Fax +1 508 753-7578  
www.xplm.com