

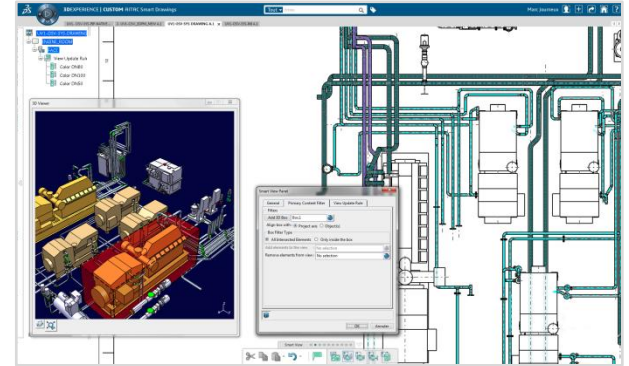
## • Smart Drawings

*Productive drafting tool for Shipbuilders, Offshore and Civil Engineering*

- Industry-specific features/annotations (elevation, slope, coloring, grids, tables)
- Easily create drawings according to all standards and company custom rules
- Quickly create and annotate structural, piping, outfitting and all cross discipline views
- Improve drawings quality, reduce user errors, user learning curve & cost
- Add behaviors during view update

*Powerful drawings creation batches*

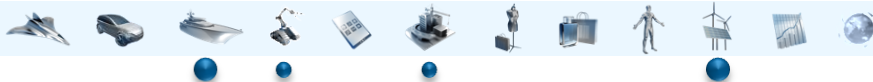
- Create most of the drawings with minimum to none user interaction
- Piping Isometrics, Piping Spool Orthogonal Drawings, HVAC drawings, etc.
- Check, compare, review drawing versions and revisions



Prerequisites(\*) ARM | CNV | MDG | PCS | TXO

(\*) Information subject to changes. Please validate with your partner manager via [mkt.partners@3ds.com](mailto:mkt.partners@3ds.com)

[\(Click here for Industry Legend\)](#)



### Contact:

Marc JOURNEUX  
+33 (0)6 76 79 27 45  
[marcjournoux@aitac.nl](mailto:marcjournoux@aitac.nl)

### Partner Website:

[www.aitac.nl](http://www.aitac.nl)