

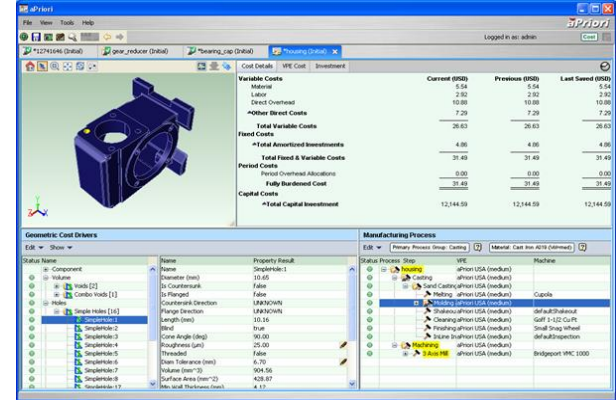
*before*  
**Cost knowledge when it matters**

## • aPriori CATIA CostConnect

*Real-time, predictive and precise product cost assessments*

- Evaluation of Geometric Cost Drivers (GCDs) directly from the CATIAV5 model(\*)
  - Ex: product's size, shape, complexity, number of holes, number of bends, thickness, profile, all through technology
- Calculation of cost in real-time, every time sourcing or design makes changes(\*)
  - Cost drivers evaluated on rigorous physics-based models of manufacturing processes
- Visibility into all the components of cost
  - Material, labor, direct overhead, period overhead and amortized tooling costs available for each step in the routing

CATIA MD2  
Coretec | Pretec  
FTA  
SMD  
PX1



**Contact:**  
**Carsten HOCHMUTH**  
 +1 978 371 2006 x400  
[chochmuth@apriori.com](mailto:chochmuth@apriori.com)

**Partner Website:**  
[www.apriori.com](http://www.apriori.com)

[Click here for Industry Legend](#)



(\*) based on aPriori's patent protected technology.