

NTT DATA ENGINEERING SERVICES

SOFTWARE
PARTNER
V5 Gold Partner



NTT data
株式会社 NTTデータ
エンジニアリングシステムズ

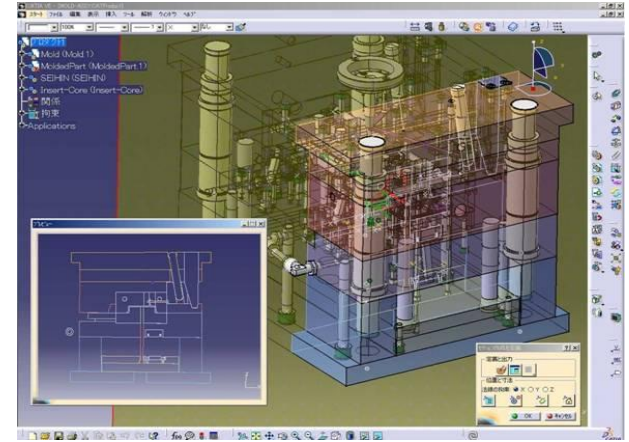
“Polished in decades by Japanese industries”

CATIA MD2

Coreq Prereq



- **SpaceE CAA V5 Based Core & Cavity Design** (Add-on and Standalone)
Facilitates the detail design of molded parts by providing automation for core and cavity definition
- **SpaceE CAA V5 Based Mold Design**
Provides dedicated features to design associative mold structures
- **SpaceE CAA V5 Based CAM** (Add-on and Standalone)
Allows NC programming for 3 axis machining operation
- **SpaceE CAA V5 Based 5Axis** (Add-on to Space-E CAM)
For machine tool setting, path creation, post-processing and NC manufacturing verification
- **SpaceE CAA V5 Based Direct Translator / STEP/ GRADE**
Direct bi-directional data exchange and data translation



Contact:

Junji KANAOKA
+81-3-5711-5341
kanaoka@nttd-es.co.jp

Partner Website:

www.nttd-es.co.jp

[\(Click here for Industry Legend\)](#)

