

# GEOMETRIC (1/3)

“InterOp Maximized”

SOFTWARE  
PARTNER  
V6 Partner



SOFTWARE  
PARTNER  
V5 Partner



## • V6 xPDM Adapter for Teamcenter

*Engineering and design data exchange between ENOVIA V6 and Teamcenter*

- Enable design and engineering processes spanning ENOVIA V6 and Teamcenter
- Facilitate upgrade to CATIAV6 for users currently using CATIAV5+Teamcenter
- Enable coexistence of Teamcenter and V6 based applications in an enterprise

Prerequisites(\*) PCS | PDE

## • GeomCaliper on CATIA V6

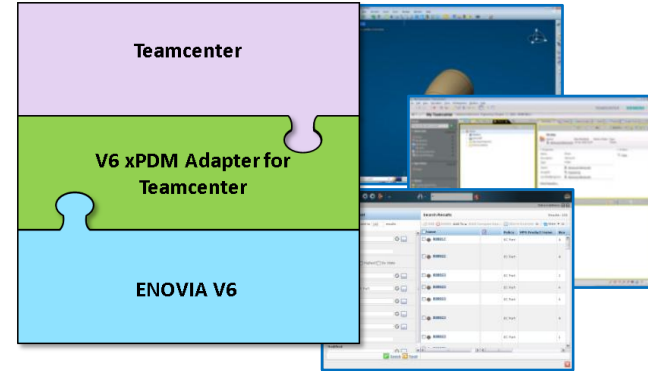
*Fast, accurate and easy to use measurement tool*

- Locate critical thickness areas through intuitive visualization (from a strength, manufacturing, weight reduction or material flow standpoint)

Prerequisites(\*) CPF | LIV | VPM

(\*) Information subject to changes. Please validate with your partner manager via [mkt.partners@3ds.com](mailto:mkt.partners@3ds.com)

[Click here for Industry Legend](#)



### Contact:

Sreekanth JAYANTI  
+91 20 4028 4974  
[sreekanth.jayanti@geometricglobal.com](mailto:sreekanth.jayanti@geometricglobal.com)

### Partner Website:

[www.geometricglobal.com](http://www.geometricglobal.com)

(\*) prerequisites subject to changes – to be checked on [3ds.com](http://3ds.com) [Geometric webpage](#)



# GEOMETRIC (2/3)

SOFTWARE PARTNER  
V6 Partner



SOFTWARE PARTNER  
V5 Partner



“InterOp Maximized”

CATIA MD2



## GeomCaliper on CATIA V5 - Advanced

*Fast, accurate and easy to use measurement tool*

- Localization of critical thickness areas from a strength, manufacturing, weight reduction or material flow standpoint

ENOVIA DER



## V5- xPDM Gateway

*Process-driven exchange of design and engineering data between ENOVIA V5 VPM and Teamcenter*

- Asynchronous integration with minimal user intervention
- Minimum deployment time & lower deployment cost

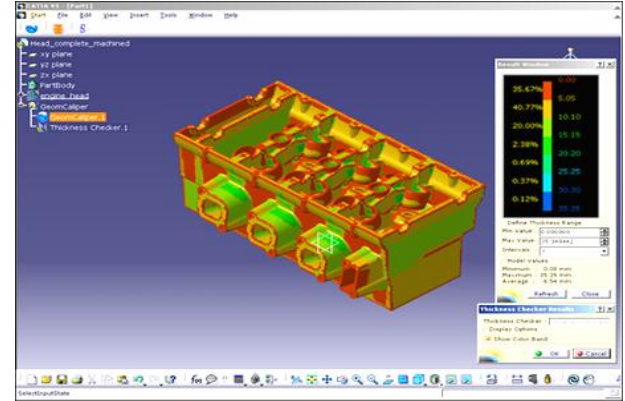
Any DELMI Config



## Manufacturing Hub Adapter

*Collaborating between Design and Manufacturing domains*

- Eliminating costly downstream issues early in lifecycle
- Manufacturing users gain access to latest configuration data and context



### Contact:

Sreekanth JAYANTI  
+91 20 4028 4974  
[sreekanth.jayanti@geometricglobal.com](mailto:sreekanth.jayanti@geometricglobal.com)

### Partner Website:

[www.geometricglobal.com](http://www.geometricglobal.com)

[\(Click here for Industry Legend\)](#)



# GEOMETRIC (3/3)

“From inception to conclusion”

SOFTWARE  
PARTNER  
V6 Partner



SOFTWARE  
PARTNER  
V5 Partner



## • eDrawings for CATIA V5 (Adopter Product)

*First email-enabled collaboration tool designed to ease the sharing & interpretation of 2D/3D product design data*

- Unlimited users can easily markup and provide feedback at no cost
- Secure collaboration
- Compact file size facilitates email exchange
- eDrawings in executable format eliminates the need to even install the viewer

CATIA MD1

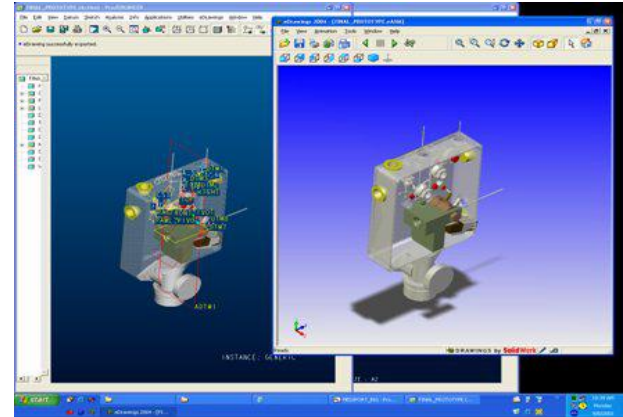


## • GeomCaliper on CATIA V5 (Adopter Product)

*Locate thin and thick sections in model (Thickness Analyzer launch button)*

- Locate critical thickness areas through intuitive visualization (from a strength, manufacturing, weight reduction or material flow standpoint)
- Generate detailed reports
- Two analysis methods (*Normal Ray & Rolling Sphere*)

CATIA MD2



### Contact:

Vinay KULKARNI  
+91 22 6705 6093  
[vinay.kulkarni@geometricglobal.com](mailto:vinay.kulkarni@geometricglobal.com)

### Partner Website:

[www.geometricglobal.com](http://www.geometricglobal.com)

[\(Click here for Industry Legend\)](#)

