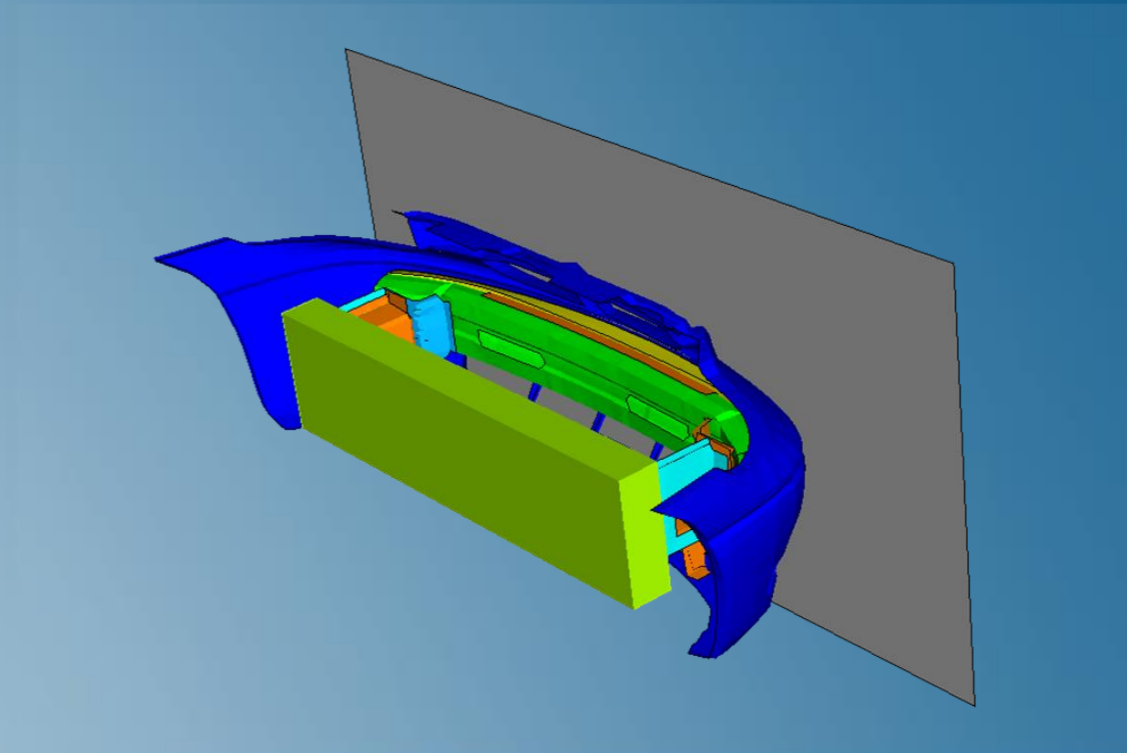


Abaqus/Explicit: Advanced Topics

Abaqus 2022



3DEXPERIENCE[®]

About this Course

Course objectives

Upon completion of this course you will be able to:

- ▶ Use the explicit dynamics method effectively, including the application of general contact, mass scaling, and adaptive remeshing
- ▶ Use Abaqus/Explicit and Abaqus/Standard together to solve difficult problems, including results transfer and co-simulation
- ▶ Model high-strain-rate deformation and failure
- ▶ Filter output

Targeted audience

Simulation Analysts

Prerequisites

This course is recommended for engineers with experience using Abaqus



3 days

Day 1

- ▶ Lesson 1 Overview of Abaqus/Explicit
 - Workshop 1 Conditional Stability of Abaqus/Explicit

- ▶ Lesson 2 Elements

- ▶ Lesson 3 Contact Modeling
 - Workshop 2 Impact of a Dodge Caravan Bumper Against a Rigid Barrier

Day 2

- ▶ Lesson 4 Quasi-Static Analyses
 - Workshop 3 Quasi-static Analysis of a Rubber Bushing
- ▶ Lesson 5 Constraints and Connections
- ▶ Lesson 6 Impact and Postbuckling Analyses
 - Workshop 4 Crushing of a Tube

Day 3

- ▶ Lesson 7 Material Damage and Failure
- ▶ Lesson 8 Importing and Transferring Results
 - Workshop 5 Bird Strike Simulation
- ▶ Lesson 9 Managing Large Models
- ▶ Lesson 10 Output Filtering

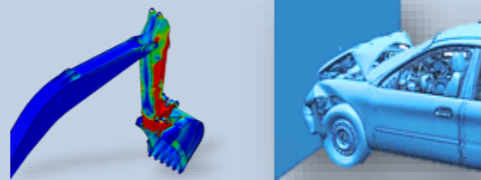
Additional Material

- ▶ Appendix 1 Explicit Dynamics Algorithm
- ▶ Appendix 2 Features of General Contact & Contact Pairs
- ▶ Appendix 3 Abaqus/Standard to Abaqus/Explicit Co-simulation
 - Workshop 6 Beam Impact Co-simulation

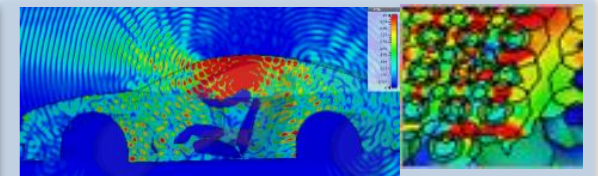
SIMULIA

- ▶ SIMULIA is the Dassault Systèmes brand for realistic simulation solutions.
- ▶ Advanced simulation portfolio covering simulation disciplines such as structural mechanics, computational fluid dynamics and electromagnetic field simulation, for a true multiphysics simulation approach.

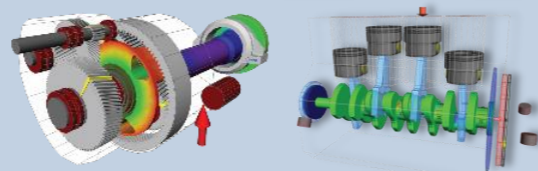
Structures



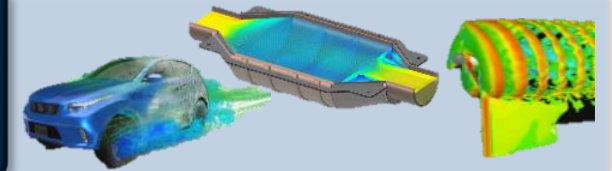
Electromagnetics



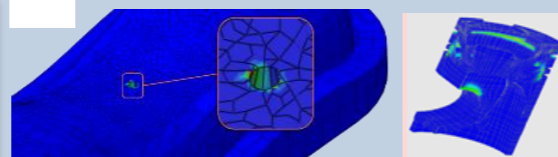
Multibody



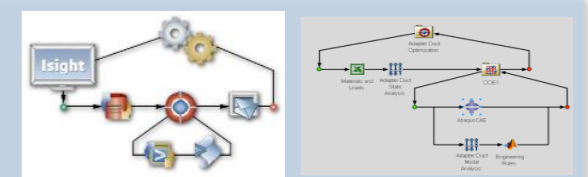
Fluids



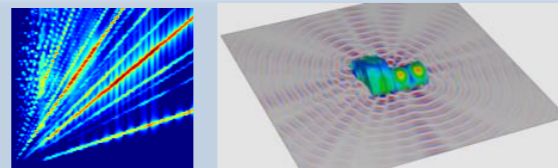
Durability



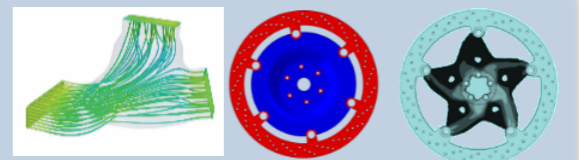
Automation



Vibro-acoustics



Optimization



Join the Community!

Go to go.3ds.com/simc to log in or join!



SIMULIA COMMUNITY

BECOME PART OF A GLOBAL USER COMMUNITY FOCUSED ON ADVANCING THE USE OF SIMULIA SIMULATION SOLUTIONS IN SCIENCE AND ENGINEERING

[LOGIN NOW](#)

Join Us

Interested in the latest in simulation? Looking for advice and best practices? Want to discuss simulation with fellow users and Dassault Systèmes experts?

The SIMULIA Community is the place to be.

Simply [log in](#) with your 3DS Passport username and password. If you use DSx Client Care for technical support, you can use these same credentials to access the community.

If you do not already have a 3DS Passport, you can [register now](#). An account is free and access is instant.



Join the conversation

Start a discussion with other members of the SIMULIA Community. Talk through your burning simulation questions with peers, SIMULIA experts and SIMULIA Champions. Apply to be an author to create posts, share useful tips you've discovered for SIMULIA software and establish yourself as a thought-leader. The SIMULIA Community is home to both SIMULIA product users across the world, and to SIMULIA subject matter experts.

Stay up to date on the latest news

Modern industry trends change rapidly, and SIMULIA is always developing its products to stay ahead. Follow the SIMULIA Community to be informed of new product releases and updates to the Knowledge Base, and to receive links to articles and blog posts about the latest industry trends.



Browse e-learning resources

The SIMULIA Community brings together learning materials covering numerous applications for SIMULIA products. Read a whitepaper on the benefits of simulation in your work, discover tips and tricks for using SIMULIA software efficiently, or watch a demonstration of how to use simulation to achieve your goals.

SIMULIA Training

<https://www.3ds.com/products-services/simulia/training/>



SIMULIA TRAINING

PROVIDING TRAINING SERVICES TO ENABLE OUR CUSTOMERS TO BE MORE PRODUCTIVE AND COMPETITIVE

FIND A BUSINESS PARTNER

Simulation Training

SIMULIA and our education partners offer regularly scheduled public seminars as well as training courses at customer sites. An extensive range of courses are available, ranging from basic introductions to advanced courses that cover specific analysis topics and applications. The same courseware, and other content, is available for self-paced eLearning. On-site courses can be customized to focus on topics of particular interest to the customer, based on the customer's prior specification. To view the worldwide course schedule, register for a course, or to learn more about our eLearning options, visit the links below.

SIMULIA DIRECT TRAINING



Instructor-lead training of both off-the-shelf materials and customized content based on your needs.

MENTORING



Mentoring consists of short-term engagements to accelerate the efficiency and effectiveness of your processes

EDUCATION PARTNER TRAINING



SIMULIA has a large eco-system of education partners with certified instructors who also

SIMULIA ELEARNING RESOURCES



SIMULIA provides extensive eLearning solutions, published on various platforms, to enable:

Legal Notices

The software described in this documentation is available only under license from Dassault Systèmes or its subsidiaries and may be used or reproduced only in accordance with the terms of such license.

This documentation and the software described in this documentation are subject to change without prior notice.

Dassault Systèmes and its subsidiaries shall not be responsible for the consequences of any errors or omissions that may appear in this documentation.

No part of this documentation may be reproduced or distributed in any form without prior written permission of Dassault Systèmes or its subsidiaries.

© Dassault Systèmes, 2021

Printed in the United States of America.

Abaqus, the 3DS logo, and SIMULIA are trademarks or registered trademarks of Dassault Systèmes or its subsidiaries in the US and/or other countries.

Other company, product, and service names may be trademarks or service marks of their respective owners. For additional information concerning trademarks, copyrights, and licenses, see the Legal Notices in the SIMULIA User Assistance.

Revision Status

| | | |
|------------------|--------------|--------------------------------|
| Lesson 1 | 11/21 | Updated for Abaqus 2022 |
| Lesson 2 | 11/21 | Updated for Abaqus 2022 |
| Lesson 3 | 11/21 | Updated for Abaqus 2022 |
| Lesson 4 | 11/21 | Updated for Abaqus 2022 |
| Lesson 5 | 11/21 | Updated for Abaqus 2022 |
| Lesson 6 | 11/21 | Updated for Abaqus 2022 |
| Lesson 7 | 11/21 | Updated for Abaqus 2022 |
| Lesson 8 | 11/21 | Updated for Abaqus 2022 |
| Lesson 9 | 11/21 | Updated for Abaqus 2022 |
| Lesson 10 | 11/21 | Updated for Abaqus 2022 |

| | | |
|-------------------|--------------|--------------------------------|
| Appendix 1 | 11/21 | Updated for Abaqus 2022 |
| Appendix 2 | 11/21 | Updated for Abaqus 2022 |
| Appendix 3 | 11/21 | Updated for Abaqus 2022 |
| Workshop 1 | 11/21 | Updated for Abaqus 2022 |
| Workshop 2 | 11/21 | Updated for Abaqus 2022 |
| Workshop 3 | 11/21 | Updated for Abaqus 2022 |
| Workshop 4 | 11/21 | Updated for Abaqus 2022 |
| Workshop 5 | 11/21 | Updated for Abaqus 2022 |
| Workshop 6 | 11/21 | Updated for Abaqus 2022 |

Lesson 1: Overview of Abaqus/Explicit

Lesson content:

- ▶ What is Explicit Dynamics?
- ▶ Abaqus/Explicit vs. Abaqus/Standard
- ▶ Some Challenging Problems
- ▶ Defining an Abaqus/Explicit Procedure
- ▶ Stable Time Increment
- ▶ Bulk Viscosity Damping
- ▶ Energy Balance
- ▶ Monitoring Diagnostic Messages
- ▶ Output
- ▶ Workshop Preliminaries
- ▶ Workshop 1: Conditional Stability of Abaqus/Explicit (IA)
- ▶ Workshop 1: Conditional Stability of Abaqus/Explicit (KW)



Both interactive (IA) and keywords (KW) versions of the workshop are provided. Complete only one.



2 hours

Lesson 2: Elements

Lesson content:

- ▶ Introduction
- ▶ Solids Elements
- ▶ Shell and Membrane Elements
- ▶ Beam and Truss Elements
- ▶ Special-Purpose Elements and Techniques
- ▶ Element Distortion Control
- ▶ Hourglassing, Locking, and Other Issues
- ▶ Second-order Accuracy



1.5 hours

Lesson 3: Contact Modeling

Lesson content:

- ▶ Introduction to Contact in Abaqus/Explicit
- ▶ Basic Features of General Contact
- ▶ General Contact Surfaces
- ▶ General Contact Domain
- ▶ General Contact Interface Properties
- ▶ General Contact Constraint Enforcement
- ▶ General Contact Surface Thickness
- ▶ Edge Contact
- ▶ Initial General Contact State
- ▶ General Contact Output
- ▶ Limitations of General Contact
- ▶ Workshop 2: Impact of a Dodge Caravan Bumper Against a Rigid Barrier (IA)
- ▶ Workshop 2: Impact of a Dodge Caravan Bumper Against a Rigid Barrier (KW)



Both interactive (IA) and keywords (KW) versions of the workshop are provided. Complete only one.



2.5 hours

Lesson 4: Quasi-Static Analyses

Lesson content:

- ▶ Introduction
- ▶ Quasi-Static Simulations Using Explicit Dynamics
- ▶ Loading Rates
- ▶ Energy Balance in Quasi-Static Analyses
- ▶ Mass Scaling
- ▶ Viscous Pressure
- ▶ Summary
- ▶ Workshop 3: Quasi-static Analysis of a Rubber Bushing (IA)
- ▶ Workshop 3: Quasi-static Analysis of a Rubber Bushing (KW)



Both interactive (IA) and keywords (KW) versions of the workshop are provided. Complete only one.



1.5 hours

Lesson 5: Constraints and Connections

Lesson content:

- ▶ Introduction
- ▶ Rigid Bodies
- ▶ Surface-Based Coupling Constraints
- ▶ Connector Elements
- ▶ Surface-Based Ties
- ▶ Offset Tied Interfaces
- ▶ Mesh-Independent Fasteners
- ▶ Cohesive Connections
- ▶ Virtual Crack Closure Technique
- ▶ Tips



2.5 hours

Lesson 6: Impact and Postbuckling Analyses

Lesson content:

- ▶ Impact Analysis
- ▶ Geometric Imperfections for Postbuckling Analyses
- ▶ Workshop 4: Crushing of a Tube (IA)
- ▶ Workshop 4: Crushing of a Tube (KW)



Both interactive (IA) and keywords (KW) versions of the workshop are provided. Complete only one.



2 hours

Lesson 7: Material Damage and Failure

Lesson content:

- ▶ Progressive Damage and Failure
- ▶ Damage Initiation
- ▶ Damage Evolution
- ▶ Element Removal
- ▶ Damage in Fasteners



1.5 hours

Lesson 8: Importing and Transferring Results

Lesson content:

- ▶ Introduction
- ▶ Import from Abaqus/Explicit to Abaqus/Standard
- ▶ Import from Abaqus/Standard to Abaqus/Explicit
- ▶ Import from Abaqus/Explicit to Abaqus/Explicit
- ▶ Additional Import Modeling Issues
- ▶ Limitations
- ▶ Workshop 5: Bird Strike Simulation (IA)
- ▶ Workshop 5: Bird Strike Simulation (KW)



Both interactive (IA) and keywords (KW) versions of the workshop are provided. Complete only one.



2 hours

Lesson 9: Managing Large Models

Lesson content:

- ▶ Introduction
- ▶ Simplifying the Model
- ▶ Parallel Execution
- ▶ Techniques for Reducing CPU Time
- ▶ Submodeling
- ▶ Restart
- ▶ Parts and Assemblies
- ▶ Tips



1.5 hours

Lesson 10: Output Filtering

Lesson content:

- ▶ Introduction
- ▶ What is aliasing?
- ▶ Preventing aliasing
- ▶ On-demand output
- ▶ Abaqus/Viewer postprocessing filters
- ▶ Filter options
- ▶ Filter distortions
- ▶ References



1.5 hours

Appendix 1: Explicit Dynamics Algorithm

Appendix content:

- ▶ Explicit Dynamics Algorithm



30 minutes

Appendix 2: Contact Pairs

Appendix content:

- ▶ Contact Pairs



1 hour

Appendix 3: Co-simulation

Appendix content:

- ▶ Introduction
- ▶ Examples
- ▶ Co-simulation modeling
 - General concepts
 - Keyword interface
 - Interactive interface
- ▶ Postprocessing
- ▶ Substructuring
- ▶ Technology notes
- ▶ Workshop 6: Beam Impact Co-simulation (IA)
- ▶ Workshop 6: Beam Impact Co-simulation (KW)



Both interactive (IA) and keywords (KW) versions of the workshop are provided. Complete only one.



3 hours