

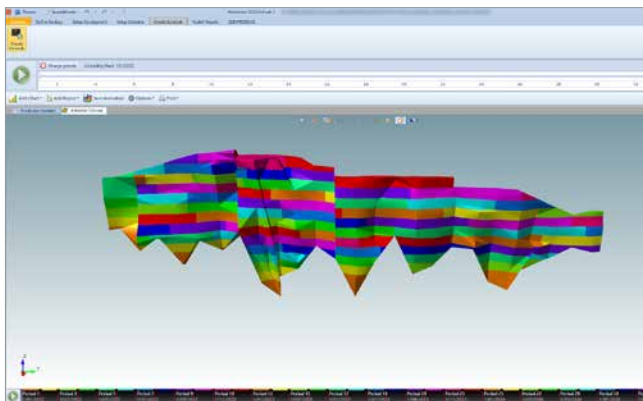
WHAT'S NEW IN GEOVIA MINESCHED™ 2022 REFRESH 1

GEOVIA MineSched™ provides scheduling for surface and underground mines of all sizes and types, improving productivity and profits beyond what's possible with manual scheduling.

The MineSched 2022 Refresh 1 has a strong focus on the continuation of new features released in the MineSched 2022 Release, as well as a range of stability improvements

EXPANDED ABILITY TO UTILIZE A BENCHING MINING METHOD

Benching Mining Method Added to the SDM Model Workflow



This will provide greater flexibility to Mine Planners when exploring a range of mining methods for their optimized Stope shapes.

The ability to reference the outputs from the *GEOVIA Stope Optimizer* role in MineSched has been improved through the inclusion of the Benchings mining method. This will provide greater flexibility to Mine Planners when exploring a range of mining methods for their optimized Stope shapes.

EXPORT GRAPHICAL RESULTS

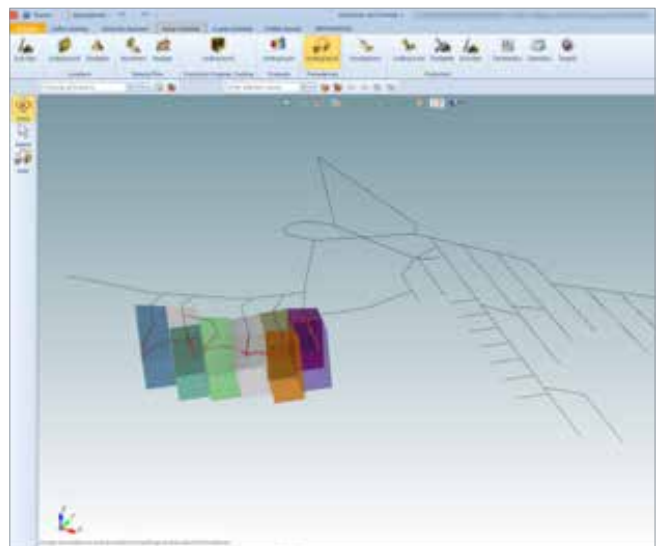
SDM Files Enriched with Attributes

Following the successful completion of a schedule, it is important to communicate the results visually. The Graphical Results tab provides a range of options for users to export the results in various formats and view them in the desired GMP solution.

When the Graphical Results are exported in SDM format, a range of key schedule details are recorded for each Location as Attributes. These attributes can then be viewed and plotted in GEOVIA Surpac.

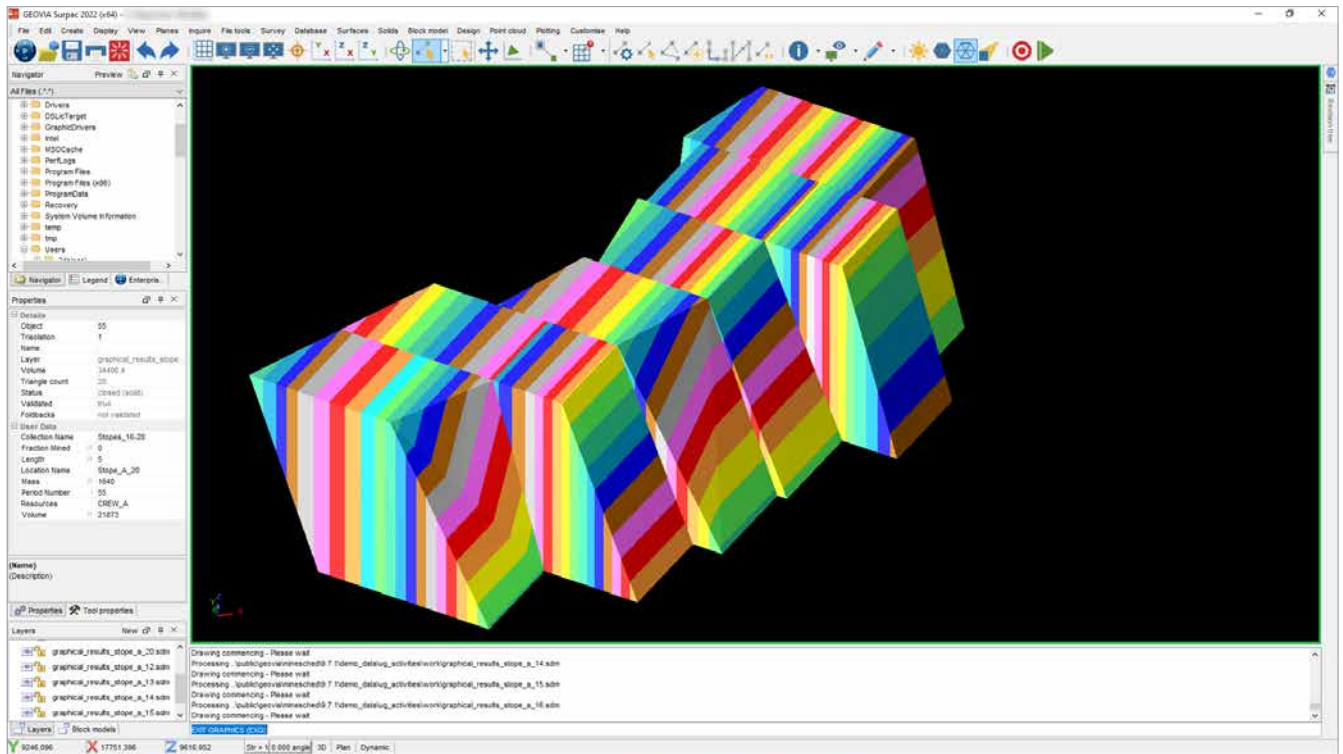
SHORT TERM PLANNING

Ancillary Activity Priorities for Underground Scenarios



The ability to assign a Priority value to ancillary activities was introduced for the new Surface Blast Location workflow in MineSched 2022. The ability to assign Priority values to ancillary activities has now been expanded to include Underground Production related activities.

The new Priority rules will provide underground Mine Planners with more flexibility when planning the activities that support production activities.



STABILITY IMPROVEMENTS

A number of important stability-related issues have been resolved. The following list outlines the key issues solved in the Refresh 1 Release:

- Ability to set a Mining direction to North has been restored;
- Improvements made to the way MineSched manages multiple Quality targets set;
- Resolution of a number of issues impacting the Graphical Sequencer;
- Resolution to a number of issues related to underground development profiles.

See the Release Notes for a full list of all work completed.

Our 3DEXPERIENCE® platform powers our brand applications, serving 11 industries, and provides a rich portfolio of industry solution experiences.

Dassault Systèmes, the 3DEXPERIENCE® Company, is a catalyst for human progress. We provide business and people with collaborative virtual environments to imagine sustainable innovations. By creating 'virtual experience twins' of the real world with our 3DEXPERIENCE platform and applications, our customers push the boundaries of innovation, learning and production. "Dassault Systèmes' 20,000 employees are bringing value to more than 270,000 customers of all sizes, in all industries, in more than 140 countries. For more information, visit www.3ds.com

