



3DEXPERIENCE™

ONEPART FOR ENGINEERING

INDUSTRIAL EQUIPMENT



Reveal Reuse Reduce

THE SOLUTION

EXALEAD OnePart is a business discovery application that accelerates reuse of parts, leveraging past designs, specifications, standards, test results, costing, and related documentation—helping engineers gain rapid visibility into information hidden anywhere inside the organization.

Let's look at an example of a senior design engineer.

MY ROLE

I am a **senior design engineer** at a leading supplier of industrial equipment serving the packaging industry, where my primary responsibility is mechanical product design and engineering using CAD tools.

My company designs and manufactures a wide range of packaging machines incorporating many standard parts (gears, bearings, springs, rollers, cutters, clamps, brackets, handles, etc.). These parts are often designed using multiple CAD programs, with data residing in multiple sources across the enterprise. I am designing a new machine with an aggressive product cost target with final engineering release to manufacturing in less than 4 months.

MY GOALS

Starting all of my assignments by **quickly checking to see if similar or exact parts already exist** somewhere inside the company.

Identifying master parts for wider reuse and standardization purposes.

- Tagging master parts is critical for design reuse, eliminating duplicates, and helping Procurement drive volume pricing with suppliers.
- Finding parts based on key status criteria (for example: work in progress, quarantine, obsolete, duplicate, etc.) strengthens global coordination and knowledge sharing to lower release risks and reduce costs.

Focusing more capacity on design innovation and less on recreating redundant parts.

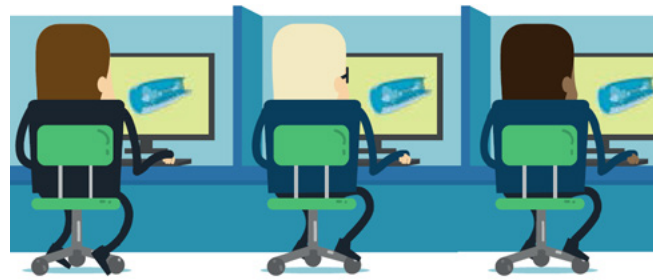
- Fast and efficient access to the company's accumulated legacy IP accelerates part reuse and capitalizes on the past to inspire future designs.
- Connecting a part's 3D shape with all associated metadata and related documentation can drive innovation and make better reuse decisions possible.

MY OPTIONS

- Create new parts from scratch: *While I can do this quickly, it leads to costly and time-consuming work downstream for testing, stress validation, quality assurance, manufacturing, and storage*
- Search company files, CAD, PDM, ERP systems: *Searching these systems individually could yield what I'm looking for, but they're not easily accessible and I'd need to search each one for all files related to the part*

Our 3DEXPERIENCE® platform powers our brand applications, serving 12 industries, and provides a rich portfolio of industry solution experiences.

Dassault Systèmes, the 3DEXPERIENCE® Company, provides business and people with virtual universes to imagine sustainable innovations. Its world-leading solutions transform the way products are designed, produced, and supported. Dassault Systèmes' collaborative solutions foster social innovation, expanding possibilities for the virtual world to improve the real world. The group brings value to over 190,000 customers of all sizes in all industries in more than 140 countries. For more information, visit www.3ds.com.



- Contact other colleagues: *It is unlikely that my colleagues know where to find a similar part, or they may have been hired after the part was produced, or may have retired*

WHAT I REALLY NEED

A high-performing part reuse solution—locating assets based on geometry, associated metadata, and related documentation quickly, efficiently, and accurately.

ONEPART CAN HELP MY COMPANY:

- **Avoid** costs associated with duplicate part creation and release risk
- **Complete** programs faster and at lower cost
- **Free** engineering capacity to drive more innovation
- **Leverage** valuable IP and knowledge locked inside legacy systems
- **Increase** competitiveness and continuous improvement

HOW IT MAKES MY JOB BETTER

- **Full access** to multi-CAD/multi-source reusable assets means less time recreating, more time innovating
- **Dramatic increase** in productivity and efficiency
- **Accurate** decision-making via side-by-side comparison of parts with all relevant data
- **Identification** of master parts for reuse, collaboration and standardization
- **Greater reuse confidence** thanks to unique capability to search based on 3D shape and related metadata in one user-friendly solution

