



ADVANCED WAREHOUSE MANAGEMENT SYSTEM DELIVERING WITH GREATER ACCURACY AND SCALE AT THE SPEED OF YOUR CUSTOMERS

Brochure



THE MANY BENEFITS OF ADOPTING AN ADVANCED WAREHOUSE MANAGEMENT SYSTEM

BOTTOM LINE

Supply chains are the catalyst that drives the growth of every manufacturer today with advanced Warehouse Management Systems transforming supply chain efficiency into internal process performance gains while ensuring accuracy, compliance and cost control.

MINIMIZE HANDLING COSTS & OPTIMIZE WAREHOUSE EFFICIENCY

The DELMIAworks® Advanced WMS is designed to provide manufacturers the agility, flexibility and speed they need to continue improving warehouse management operations in response to their customers' fast-changing needs and requirements. DELMIAworks Advanced WMS expands upon the proven WMS platform originally developed by DELMIAworks, now an integral component of the broader Dassault Systèmes suite of solutions. With its rule-based directed pick and put away distribution system, Advanced WMS is made for manufacturers who want to scale their warehouse management systems and strategies to the next level, optimizing their use of resources based on availability, customer, cost and supplier constraints they face daily in managing warehouse operations.

With features that help define enterprise-level warehouse management, Advanced WMS provides manufacturers and their warehouse teams the ability to define custom parameters for every warehouse management and optimization activity within their facility. The system then uses these guidelines to help facilities run as efficiently as possible within existing warehouse frameworks and infrastructure.

Advanced WMS increases accuracy, scale and speed while reducing costs, eliminating handling errors, improving visibility across warehousing operations. A key design goal of Advanced WMS is optimizing the movement of inventory and reducing "dead-head" time in the warehouse, all while enjoying the benefits of a system that is fully integrated with your ERP and MES.

IMPROVING INVENTORY MANAGEMENT ACCURACY AND VISIBILITY

The DELMIAworks Advanced WMS is purpose-built to provide real-time inventory management accuracy and visibility, which translates directly into cost and time savings. Improving inventory management accuracy and visibility requires a focused approach to capturing the most valuable metrics of performance and then tracking their performance over time. DELMIAworks Advanced WMS suite provides many of the most common inventory metrics and Key Performance Indicators (KPIs) including Inventory Accuracy, Damaged Inventory, Storage Utilization, Dock to Stock Time and Inventory Visibility.

ACCELERATING AND FINE-TUNING ORDER FULFILLMENT

One of the most valuable advantages of having a tightly integrated Supply Chain Management (SCM) and Advanced WMS is that orders can be quickly processed, fulfilled and often shipped with the entire process handled electronically within the warehouse. Built on top of an industry-proven platform, DELMIAworks Advanced WMS is capable of providing real-time availability of inventory management metrics. These include On-Time Delivery, Order Fill Rate, Order Accuracy, Line Accuracy, Order Cycle Time and Perfect Order Completion.

INCREASING WAREHOUSE PRODUCTIVITY

Getting more done in less time is a challenge every business faces. Increasing the productivity within a warehouse starts with a streamlined approach to pick-and-pack, and then progresses to fine-tuning order fulfillment. At the center of warehouse productivity is the need to ensure pick-and-pack performance is keeping up with every other work cycle in a company. One of the most effective approaches to continually increasing warehouse productivity is to gain insights from a series of key metrics. DELMIAworks Advanced WMS provides everything you need to begin improving warehouse productivity today. Key metrics include orders per hour picked, lines per hour picked and fulfilled, items per hour, cost per hour, and cost as a % of sales.

WHAT'S INCLUDED IN ADVANCED WMS

Whether you currently run DELMIAworks WMS or need a completely new warehouse solution for your organization, Advanced WMS allows you to scale warehousing operations to achieve greater agility, scale and speed of operations every day. The bottom line is you can be more accurate and responsive with customer shipments than before by relying on the Advanced WMS Suite integrated with your existing ERP and MES systems.

The following table outlines the features and functionality of both DELMIAworks WMS and Advanced WMS solutions:

FEATURES	WMS	ADVANCED WMS
Staging & Storing	X	X
Mobile Solution (handheld Scanners, Tablets & Smartphones)	X	X
Complete ERP System Integration	X	X
Multiple Picking Techniques	X	X
Industry Standard Barcodes	X	X
Slotting Storage Locations	X	X
Shelf Life Management	X	X
“Milk Run Planning”		X
Package, Inventory Type & Configuration Putaway Rules		X
Real-Time Scheduling (Picking, Putaways, Order Staging, Dock & Container Management)		X
Directed Task Monitoring System		X
Inventory Aisles & Aisle Generator		X
User-Defined Rules-Based Movements		X
Wave Management		X
Expected Receipts		X
Slotting Optimization		X

INVENTORY AISLES & AISLE GENERATOR

Use Advanced WMS to effortlessly generate all of your warehouse’s locations with specific parameters that each location will inherit (Figure 1). This allows users to lay-out a facility that has potentially hundreds or thousands of locations, exactly the way that will optimize scheduling and fulfillment workflows. Within these locations, elements such as dimensions, pallet stack size, weight and maximum number of pallets can be configured and implemented.

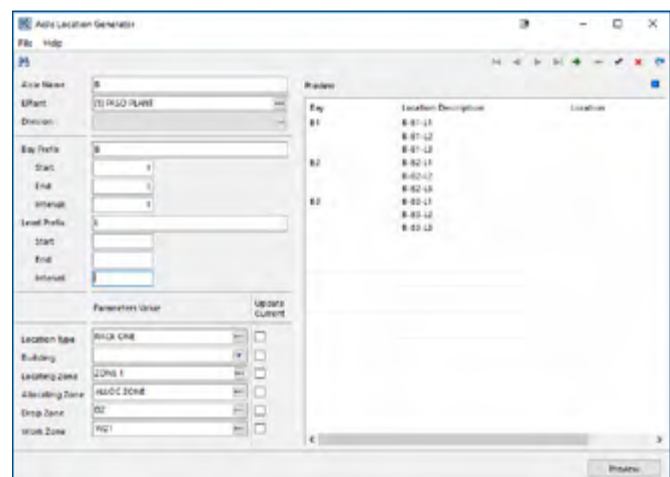


Figure 1

WAVE MANAGEMENT

Drive productivity gains with task-interleaving tools that replace deadhead trips with “milk runs” for Just In Time (JIT) pick up (Figure 2). Wave Management is used to allow the selection and planning of sales orders to fulfill. Once the Wave is created and reviewed, it can be converted into one or more pick tickets.

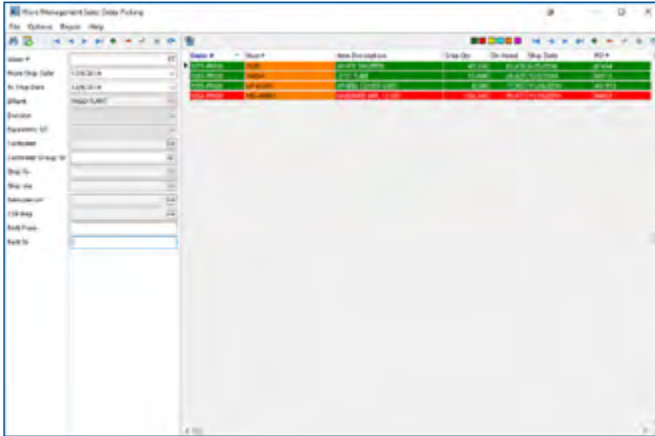


Figure 2

EXPECTED RECEIPTS

Efficiently manage expected receipts based on vendor ASN information or PO releases. The system uses this information to schedule a dock location for when supplier trucks arrive, creating a more streamlined receiving process.

USER-DEFINED RULES-BASED MOVEMENTS

Organizations using Advanced WMS have the ability to specify exactly how they would like items to move throughout their warehouse, including put away locations and where items should be picked. These rules are then parsed and sent to material handlers to direct their actions in the warehouse. When incoming items need to be warehoused, the system will use the user-based rules to determine where the products should be stored, directing the material handler to that location.

DOCK SCHEDULER & STAGING

Schedule one dock or two dozen based on pick tickets or expected receipts with this graphical calendar display (Figure 3). Advanced WMS allows for scheduling and staging to take place along with expected receipts, allowing for a more streamlined receiving process.

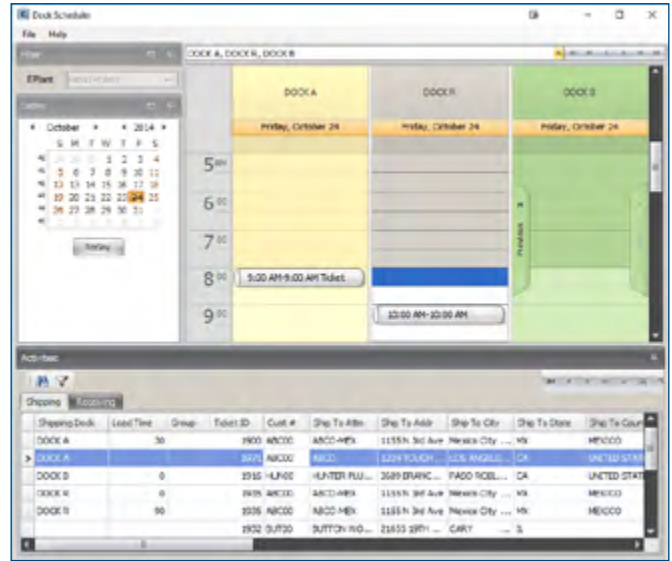


Figure 3

DIRECTED TASK MONITORING SYSTEM

Reduce labor and save time with rule-based, directed pick up and put away transactions. The Directed Task Monitoring System allows supervisors to see the lists of tasks a material handler might have in their queue, which task is currently in-process and provide the option of re-prioritizing tasks if necessary.

SLOTING OPTIMIZATION

Assign inventory classes to your items and store them in the most optimal locations in your warehouse, based on speed of movement. Reduce out of stock and expired materials or parts with LIFO, FEFO and FIFO options.

Our **3DEXPERIENCE®** platform powers our brand applications, serving 11 industries, and provides a rich portfolio of industry solution experiences.

Dassault Systèmes, the **3DEXPERIENCE** Company, is a catalyst for human progress. We provide business and people with collaborative virtual environments to imagine sustainable innovations. By creating ‘virtual experience twins’ of the real world with our **3DEXPERIENCE** platform and applications, our customers push the boundaries of innovation, learning and production.

Dassault Systèmes’ 20,000 employees are bringing value to more than 270,000 customers of all sizes, in all industries, in more than 140 countries. For more information, visit www.3ds.com.

