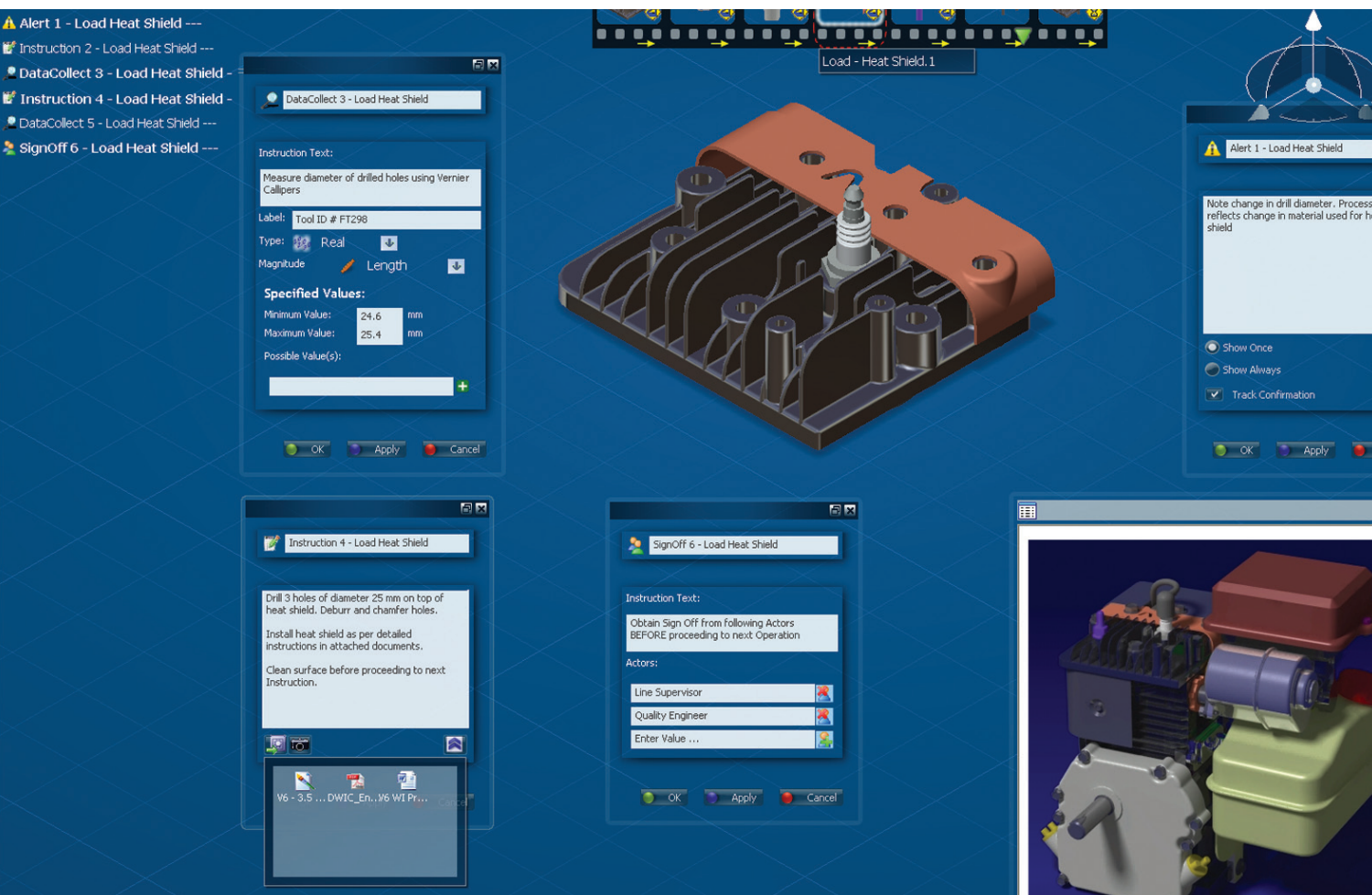


# WORK INSTRUCTIONS PLANNING

Datasheet



## DETAIL AND DOCUMENT PROCESSES:

DELMI

A WORK  
INSTRUCTIONS PLANNING  
ENABLES THE AUTHORING  
OF DETAILED OPERATIONS  
WITH WORK INSTRUCTIONS.

DELMIA Work Instructions Planning (WIP) provides a V6 3D immersive environment that delivers easy-to-use and powerful features to detail and document any process, from simple assembly prototyping scenarios to complex manufacturing or maintenance processes. The intuitive user interface makes it easy to create textual instructions to describe which job needs to be done and how to do it. These text-based work instructions can be complemented with other electronic documents and images.

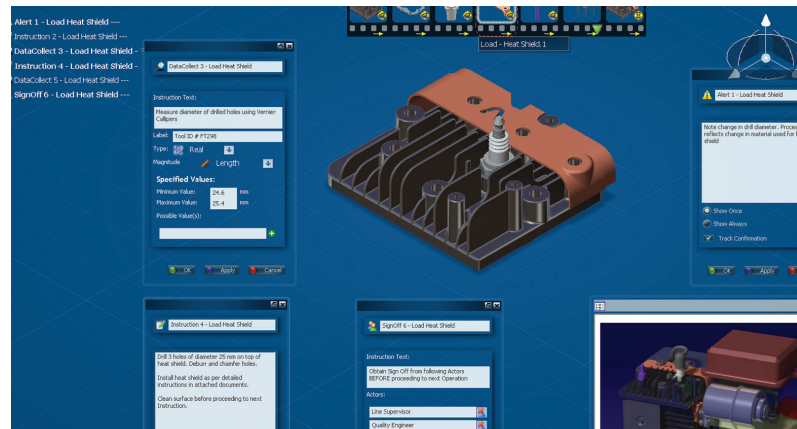
DELMIA Work Instructions Planning users can capture best practices for process execution instructions and store them in a catalog for other authors. This allows an enterprise to create and implement standards for how their products will be manufactured and assembled.

## CREATE DETAILED OPERATIONS WITH WORK INSTRUCTIONS

DELMIA Work Instructions Planning provides a V6 3D immersive environment for users to author work instruction types, including text-based work instructions, data collection, sign off and alerts. These work instruction types can then be easily sequenced with simple drag-and-drop capabilities for any specific operation in the process plan.

## WORK INSTRUCTIONS AUTHORIZING BASED ON A CONFIGURED ENGINEERING AND MANUFACTURING DATASET

The user can author work instructions based on a loaded configuration of the product and process data. Authors can check for engineering and process plan changes and the impact they may have on their work instructions, allowing for necessary updates.



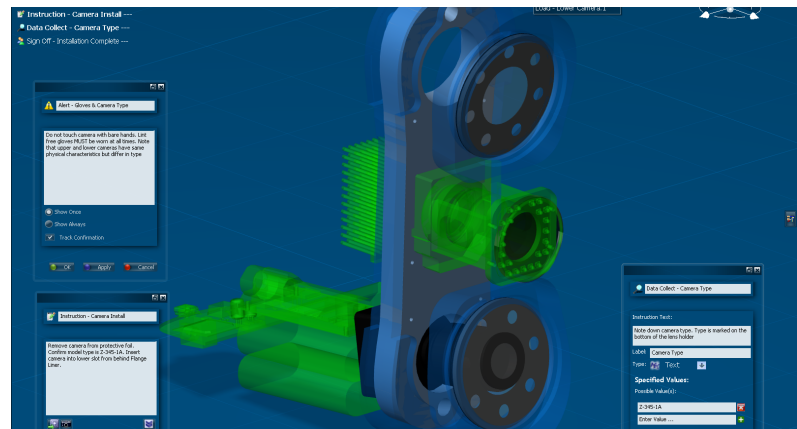
Work instructions are authored in a 3D immersive environment.

## AUTHOR WORK INSTRUCTIONS USING THE CURRENT STATE OF THE 3D ENVIRONMENT

Work instructions are created at the operational level of the process plan, providing the user with a contextual view of the state of the product and resources at a particular step of the process. Users can visualize the product build-up, position of the resources and the position of the product relative to the resources in the virtual model.

## PRODUCT HIGHLIGHTS

- Visualize the product build-up, position of the resources, and the position of the product relative to the resources in the virtual model
- Author and sequence work instruction types, including text-based work instructions, data collection, sign off and alerts
- Enrich instructions with documents and images of the 3D virtual model
- Manage standard work instructions in catalogs
- Preview the authored instructions in an immersive browser



Work instruction authors leverage configuration and lifecycle-managed product, process and resource data.

## About Dassault Systèmes

Dassault Systèmes, the 3DEXPERIENCE Company, provides business and people with virtual universes to imagine sustainable innovations. Its world-leading solutions transform the way products are designed, produced, and supported. Dassault Systèmes' collaborative solutions foster social innovation, expanding possibilities for the virtual world to improve the real world. The group brings value to over 150,000 customers of all sizes, in all industries, in more than 80 countries. For more information, visit [www.3ds.com](http://www.3ds.com).

The 3DS logo, CATIA, SOLIDWORKS, SIMULIA, DELMIA, ENOVIA, GEOVIA, EXALEAD, NETVIBES, 3DSWYM and 3DVIA are either trademarks or registered trademarks of Dassault Systèmes or its subsidiaries in the US and/or other countries.