

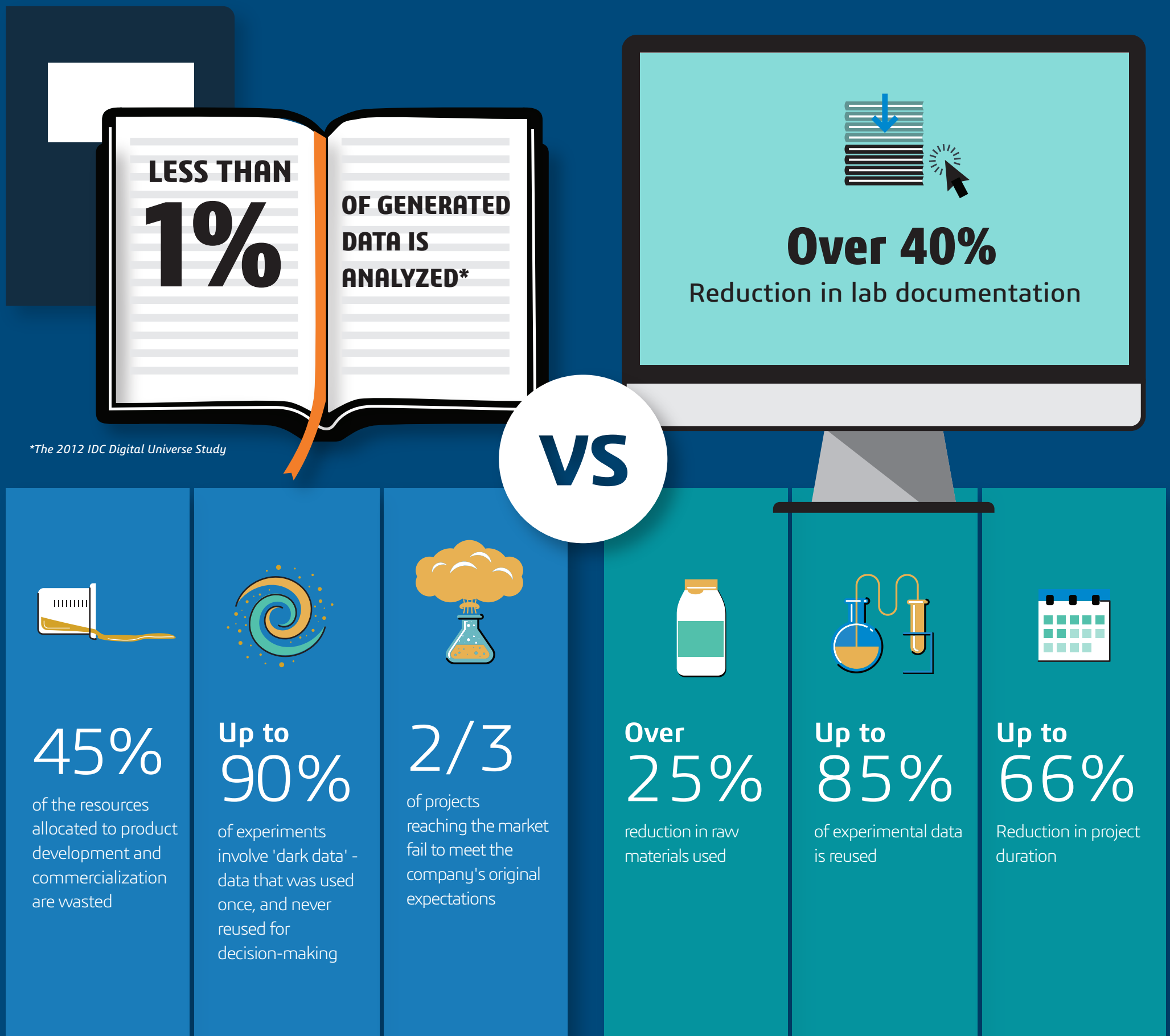
It's time to go electronic in the lab!

THE PAPER-BASED LAB

The largest barrier to innovation for any lab is performing tasks manually and recording experiment data in paper lab notebooks.

THE DIGITAL LAB

Easy-to-use digital applications can increase productivity while reducing wasted time and inefficiencies associated with searching for relevant experiment data.



To learn more, visit:
go.3ds.com/bioviaeln

Now more than ever, companies need a strategic enterprise solution partner that shares their vision for addressing today's market challenges. Digital scientific solutions can position your company as **industry leaders** capable of innovating high quality products that delight consumers. After digital lab implementation, companies reported:

Up to 40%	Up to 80%	Up to 35%
Improvement in lab productivity	Improvement in data quality	Efficiency savings per user