

# BIOVIA INSIGHT DATASHEET

BIOVIA Insight is a web-based application that allows scientists to search for, refine and analyze their data and share information and insights with their discovery teams and other collaborators, enabling cross-functional and cross-enterprise decision support.

BIOVIA Insight is designed to support end-to-end scientific workflows in a simple and intuitive way, including collaboration within scientific teams, allowing more accurately and timely decision making. It addresses specific problems across the entire workflow, including:

- Scientific data access: Getting all the necessary information quickly and easily
- Scientific data analysis: Providing access to analysis techniques and algorithms
- Scientific data visualization: Presenting the data in scientifically meaningful ways to aid interpretation
- Collaboration: Supporting team-based decision-making



Visualize your data with charts, tables, and single record views.

## INSIGHT CAPABILITIES:

BIOVIA Insight allows members of a research team to make timely, informed decisions about their projects, with capabilities including:

- Searching & importing data – Access data from multiple databases from in-house and web sources, from files or through a pre-defined data gathering and processing workflow.
- Browsing – Data can be browsed live against the source database and also against project team data extracts, using the same, user-definable browse forms.

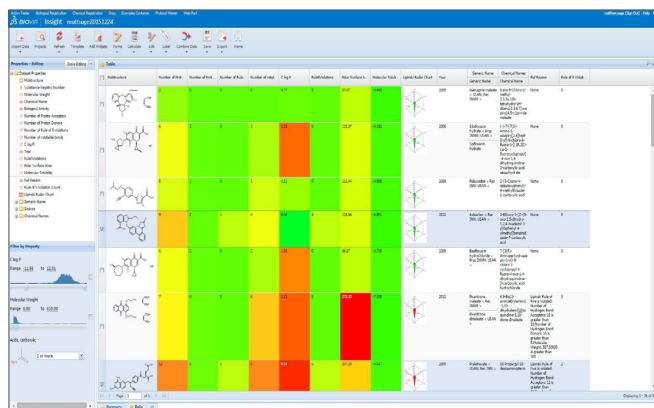
Supplier	Catalog	Product Name	Catalog Number	Price	Quantity	Unit	Purity	Comments
Alkermes Pharmaceuticals	7385-30-7	100% BHTL DOCHAMIDE	26004-10	125	100	g	99%	25
Kanto Chemical Co., Ltd.	7385-30-7	100% BHTL DOCHAMIDE	4300-10	1000	20	g	99%	10
Shen Chemical	7385-30-7	100% BHTL DOCHAMIDE	80-10	200	100	g	99%	10
Shen Chemical	7385-30-7	100% BHTL DOCHAMIDE	80-10	40	100	g	99%	10
Valco Chemical, Inc.	7385-30-7	100% BHTL DOCHAMIDE	80-10	3000	20	g	99%	10
Valco Chemical, Inc.	7385-30-7	100% BHTL DOCHAMIDE	80-10	3000	20	g	99%	10
YCI America, Inc.	7385-30-7	100% BHTL DOCHAMIDE	80-10	200	100	g	99%	10
YCI America, Inc.	7385-30-7	100% BHTL DOCHAMIDE	80-10	200	100	g	99%	10
YCI America, Inc.	7385-30-7	100% BHTL DOCHAMIDE	80-10	200	100	g	99%	10

Browse and search results in user-definable forms that can contain hierarchical data.

- Use BIOVIA Insight to Search and Browse BIOVIA Content using familiar forms to those of ISIS and ISENTIS, link out to journal references, view GHS and Safety Datasheets (SDS) from BIOVIA ACD (an additional license may be required for the BIOVIA Content).
- List Combinations – Saved lists and recent queries can be further refined using list logic operations: Union, Intersect or NOT.
- Filtering and combining data – Retrieved data can be refined by filtering and supplemented with additional data, from the same sources (searches and data import), ensuring that the right data is always available.
- Visualization – A variety of linked and interactive views of data are provided and can have conditional formatting defined and applied on them, these include; tables, forms, charts and scientific visual analytics. Standard views can be provided so the user can define their own views through simple drag and drop. Drill-down views provide more detail on higher level overview panels. Custom visualizations can be created.
- Calculation and analytics – Integrated calculations and advanced scientific analytics methods can be applied directly to the data and the results of those analytics visualized.
- Personal Data Sources and Team Collaboration – Scientists can load, analyze and visualize data and results and provide

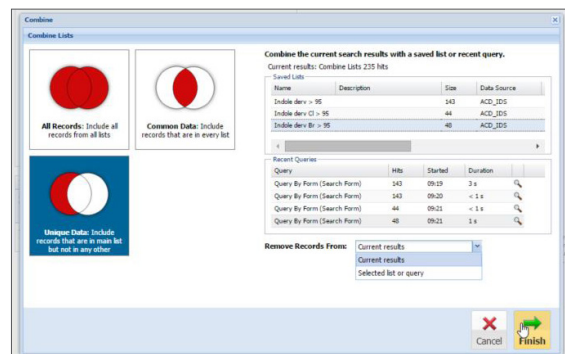
- Templates – Run calculations, apply filters and define layouts that can be reused and applied to common data sets
- Refresh – Refresh project data extracts by appending new information and update existing data whilst persisting the project layout and annotations
- Export – Export data in many forms to be consumed by other applications or for reporting
- Configuration and extensibility

- The application automatically tailors itself to individual scientists, presenting them with recent activities, data, and analyses shared by colleagues.
- Working with the intuitive web interface, scientists can then further tailor the BIOVIA Insight experience to their workflows and preferences.
- Developers can extend BIOVIA Insight through the development of protocols in the BIOVIA Foundation to provide specific scientific calculations, new visualizations, exports, and reports tailored to their company's specific needs and expertise.



**BIOVIA INSIGHT IS THE NEXT GENERATION OF  
LEGACY PRODUCTS ACCORD ENTERPRISE, ISIS,  
AND ISENTRIS**

To learn more about BIOVIA Insight, go to [accelrys.com/insight](https://accelrys.com/insight)



Our **3DEXPERIENCE** Platform powers our brand applications, serving 12 industries, and provides a rich portfolio of industry solution experiences.

Dassault Systèmes, the **3DEXPERIENCE** Company, provides business and people with virtual universes to imagine sustainable innovations. Its world-leading solutions transform the way products are designed, produced, and supported. Dassault Systèmes' collaborative solutions foster social innovation, expanding possibilities for the virtual world to improve the real world. The group brings value to over 170,000 customers of all sizes in all industries in more than 140 countries. For more information, visit [www.3ds.com](http://www.3ds.com).



©2016 Dassault Systèmes. All rights reserved. **3DEXPERIENCE**, the Compass icon and the 3DS logo, CATIA, SOLIDWORKS, ENOVIA, DELMIA, SIMULIA, GEOVIA, EXALEAD, 3D VIA, BIOVIA and NETVIBES are commercial trademarks.