

ARCHITECTURE, ENGINEERING & CONSTRUCTION

OPTIMIZED WORK PACKAGE

Part of Optimized Construction



ADVANCED PROJECT DELIVERY THROUGH EFFICIENT CONSTRUCTION PROJECT DEFINITION

Optimized Work Package is part of the Dassault Systèmes Optimized Construction Industry Solution Experience based on the **3DEXPERIENCE®** platform, focused on eliminating waste and increasing profits. All stakeholders have access to the same single source of information, enabling visibility across key project members with access control depending on a user's role and organization. It consistently handles all aspects of the design and construction documentation lifecycle, linking planning milestones of architectural drawing, shop drawing, and construction document deliveries; the documents themselves in digital format (BIM, drawing PDF, spreadsheet tables, etc.); and the validation workflow. Deviations from project planning that could handicap further project execution are monitored, enabling timely correction; and access to the correct document version is always available.

Monitoring Building Information Modeling and construction deliveries into comprehensive data storage

From the start of a project, a plan defines a delivery calendar of document baselines, often called "construction work-packages". Delivery dates are defined according to downstream requirements. In this way, terrain civil engineering and/or space documents will be ready before detailed plumbing design. Mastering such long delivery plans is a difficult job. In order to ease monitoring while facilitating timely delivery, **Optimized Work Package** associates structured storage of document deliveries with project planning to help improve quality, safety, and productivity. "On demand" status dashboards give full visibility to project managers about delivery status, while alerts are automatically generated when BIM and/or design and construction documents delivers as planned.

Monitoring validation with integrated assurance quality Work package documents follow multiple levels of approval and sign-off. In general, parties in the approval process can include architects, engineers, the project manager, the owner's representative, but it can also include downstream users, such as general contractors, sub-contractors and fabricators. The multiplicity of individual delays in the validation cycle too often impacts further project execution.

Optimized Work Package encourages accountability of individuals and drives quality assurance with a standardized process that highlights deviations. It does so by implementing the concept of a "single version of the truth". Stakeholders have access to the last version of a single, unified document. Electronic validation workflows also enable controlled change management and give the project manager full visibility of the validation progress within the company and external partners.

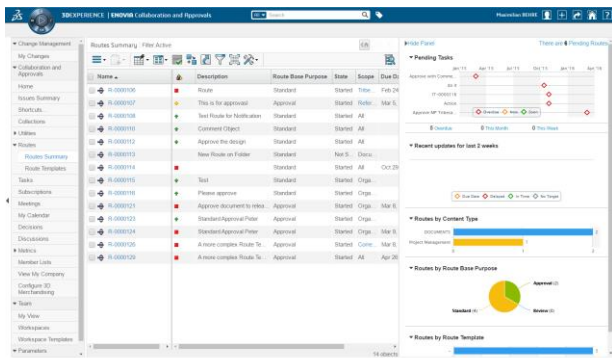


Figure 1 High Level view of ongoing document approvals

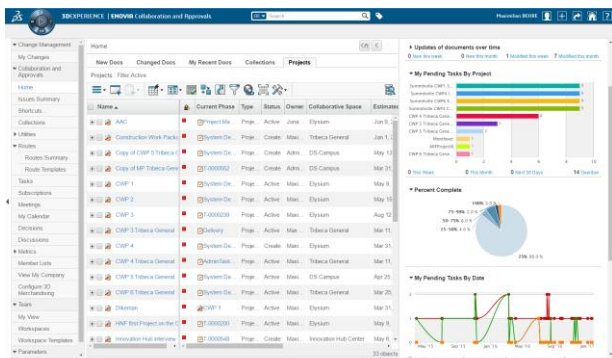


Figure 2 High Level view of all ongoing Projects

Ready-to-use project database for all downstream processes.

Large construction projects are often global, and the supplier or final customer may be in another country. Intellectual property often has to be protected or may have to be submitted to export control for review. The information structure created natively with **Optimized Work Package** also enables access control according to the user's role. **Optimized Work Package** delivers information security, as well as work productivity gains, to procurement, the VDC managers, suppliers, and contractors. They get notification once a work package is validated, and can access the searchable and navigable database to easily find the most up-to-date and approved documents. **Optimized Project** is another component of the Optimized Construction Industry Solution Experience that benefits from having the proper, ready-to-use information provided by **Optimized Work Package** from the start of a project.

Our 3DEXPERIENCE® platform powers our brand applications, serving 12 industries, and provides a rich portfolio of industry solution experiences.

Dassault Systèmes, the 3DEXPERIENCE® Company, provides business and people with virtual universes to imagine sustainable innovations. Its world-leading solutions transform the way products are designed, produced, and supported. Dassault Systèmes' collaborative solutions foster social innovation, expanding possibilities for the virtual world to improve the real world. The group brings value to over 190,000 customers of all sizes in all industries in more than 140 countries. For more information, visit www.3ds.com.



Americas
Dassault Systèmes
175 Wyman Street
Waltham, Massachusetts
02451-1223
USA

Europe/Middle East/Africa
Dassault Systèmes
10, rue Marcel Dassault
CS 40501
78946 Vélizy-Villacoublay Cedex
France

Asia-Pacific
Dassault Systèmes K.K.
ThinkPark Tower
2-1-1 Osaki, Shinagawa-ku,
Tokyo 141-6020
Japan