

Dassault Systèmes

Customer License Key Reference

Excludes V6 and 3DEXPERIENCE®



3DEXPERIENCE®

Version 1.67
January 17, 2024

Audience and Scope

This document is a general reference for software license keys required by Dassault Systèmes products other than V6 and **3DEXPERIENCE**, and their pre-requisites. It is intended primarily for Customer personnel responsible for requesting, installing, and administering Dassault Systèmes license keys. It applies to non-V6 “Generally Available” products. It should be used as a supplement to the product documentation, which should always be consulted first.

Detailed instructions on how to determine what keys are needed, how to administer them, and how to gather information needed to complete the Key Request Form are provided in later sections of this document. See the table of contents to find the section for a given product set.

Contents

Audience and Scope	2
How to Request Keys – Overview	5
Obtaining Target ID software	6
3DEXCITE	7
BIOVIA Collaborative Science, BIOVIA Unified Lab Management and BIOVIA Process Production Operations	8
BPA License Keys	9
AITAC SmartDrawings	10
Argosim.....	11
CATIA Composer / 3DVia Composer	12
CATIA Magic / No Magic.....	13
CATIA SCANeR.....	14
CCWAY License Keys	15
DELMIA Augmented Experience (Diota)	16
DELMIA License Keys	17
DELMIA Kineo	18
DELMIA Operations, Intercim, Pertinence Suite & Velocity	19
DELMIA Apriso	21
DELMIA Ortems.....	22
DELMIAworks EnterpriseIQ	23
DraftSight.....	24
DYMOLA.....	25
ELECTRE	26
EDAT (ENOVIA Deployment Acceleration Toolkit).....	27
ENOVIA Ingenuity.....	28
ENOVIA Impararia	29
ENOVIA Pinpoint and Tego.....	30
ENOVIA Quality and Regulatory Management.....	31
ENOVIAvpm	32
EXALEAD V6.....	33
GEOVIA MineSched	37
GEOVIA Surpac.....	38
GEOVIA Whittle	39
Helix Interface for CATIA	40
ICEM DDN	42

ICEM Surf	43
INSPI Manufacturing	45
Iterop	46
NETVIBES License Keys	47
Q-Checker for V5 & V4	48
Q-Checker for V6	49
Quintiq	50
Reqtify - ControlBuild - AUTOSAR Builder	51
SFE	52
Simulayt	53
SIMULIA Abaqus	54
SIMULIA CST Studio Suite and SIMULIA Opera	55
SIMULIA Isight	56
SIMULIA PowerFLOW Suite	57
SIMULIA Simpack	58
SIMULIA Tosca	59
SIMULIA Wave6	60
SIMULIA XFlow	61
SIMULIA Simpoe	62
SIMULIA Wast-Net (MiG)	63
Appendix A. Determining the Target ID	64
Appendix B. Determining the Hostname	86
<i>Change Log</i>	87

How to Request Keys – Overview

Starting with the V5-6R2018 release, a new licensing mode is provided as a new mode of DSLS and named Managed Licensing Service.

Managed Licensing Service mode provides you with the ability to run certain levels of on-premises DSLS enabled products and configurations. Using this mode, the specific products and configurations which are enabled to support this mode obtain their license keys from a failover license server managed by Dassault Systèmes, and which is not installed on your premises.

In that context for the License Server, you no longer need a physical machine on which you install the DS License Server. The license server is managed by Dassault Systèmes and is a failover cluster comprising three members.

When you order licenses and specify that you want to operate in Managed Licensing Service mode, a new authentication file will be sent to you by e-mail, for deployment on all your licensing clients. Such file ensures that only the licenses belonging to you are granted to the licensing client. This e-mail will also contain the failover cluster details.

For the other licensing mode, you still operate by the standard procedure for requesting keys.

If a special procedure is needed for a particular product set, it will be described in the section for that product set later in this document.

Your Sales team can order license keys either as part of the product order, or later.

In the first case, your Sales team will submit the License Key request for you. They will request certain critical information from you, such as the “Target ID” (“Host ID”, etc.) of the machine where you wish to install the keys, in order to create the License Key Order.

In order to provide this information, you will find attached to the quote you receive from Dassault Systèmes a License Key and Media request form as the final page of your quote. The form should be sent to your sales team with your Purchase Order document.

In case you prefer to order keys after Dassault Systèmes Order approval, you will receive an Order Notification email. This email describes how to contact your Key Management Center team to request license keys, and it gives the URL to download the appropriate License Key Request form: <http://www.3ds.com/terms/software-keys/>

You should complete this form and submit it directly to the KMC for your geography. The form gives the phone number, email, FAX information, and hours of availability of the KMC for your geography. The key request form also provides emergency key request contact info.

In order to get started, you will need a list of Product Numbers for all the products you have purchased.

Lastly, you can request Dassault Systèmes License Keys directly from DSx.Client Order. Please contact your regional KMC for details.

Obtaining Target ID software

In most cases, the utility used to obtain a target ID is shipped with the product media. If you wish to save time by ordering keys prior to receiving product media, you may need a copy of the appropriate utility and instructions. For most license key software, these utilities and instructions can be downloaded from <http://www.3ds.com/terms/software-keys>

3DEXCITE

Licensing Software and Key Style

3DEXCITE DELTAGEN products Licensing Software is specific (FLEXIm). It is shipped with the product media. DSLS licensing system is available from release 3DEXCITE DG 2017x.

3DEXCITE PICTUREBOOK products Licensing Software is specific (WEBSina). It is shipped with the product media.

3DEXCITE DELTAGEN Marketing Suite Licensing Software is specific (FLEXIm) and is shipped with the product media. DSLS licensing system is available from release 3DEXCITE DGMKT 2020x.

License Key Request Procedure

3DEXCITE license keys are ordered by the standard procedure. See "How to Request Keys – Overview". License keys are generated only when requested. 3DEXCITE license key requests are entered by your sales representative.

Obtaining Target ID software

Please refer to Appendix A for information related to this field.

BIOVIA Collaborative Science, BIOVIA Unified Lab Management and BIOVIA Process Production Operations

Licensing Software and Key Style

BIOVIA Collaborative Science, BIOVIA Unified Lab Management and BIOVIA Process Production Operations products Licensing Software, is specific. It is shipped with the product media.

License Key Request Procedure

BIOVIA license keys are ordered by the standard procedure. See “How to Request Keys – Overview”. License keys are generated only when requested. MyProductLine license key requests are entered by your sales representative.

Obtaining Target ID software

Please see Appendix A for information related to this field.

BPA License Keys

Introduction

BPA's are customer or services developed software programs sold and distributed by Dassault Systèmes.

Licensing Software and Key Style

Prior to Delivery 9, BPA's licensing systems are either proprietary either LUM. Starting with Delivery 9, some Business Process Accelerators (BPA's) support DSLS license keys.

For Delivery 10:

- All BPA's (Except DS9) support use of DSLS license keys
- FT9 and SD9 support DSLS only
- FT9 and SD9 support Concurrent Offline mode.

Starting with Delivery 11, only DSLS keys are available.

License Key Request Procedure

BPA license keys are ordered by the standard procedure. See "How to Request Keys – Overview". License keys are generated only when requested. BPA license key requests are entered by your sales representative.

Obtaining Software to Determine DSLS Target ID

The utility used to obtain the Target ID is shipped with the product media for which DSLS is supported. It can also be downloaded at www.3ds.com/terms/software-keys (see Appendix A).

AITAC SmartDrawings

Licensing Scheme and Type and Key Style

AITAC Smart Drawings products Licensing Software is specific, based on the FlexLM software.

License Key Request Procedure

AITAC Smart Drawings keys are ordered through the standard License Key ordering procedure. See How to Request Keys - Overview. License keys are generated only when requested.

Obtaining Target ID software

Please refer to Appendix A for information related to this field.

Argosim

Licensing Scheme and Type and Key Style

Argosim products uses DSLS Licensing Software from release R2020.

License Key Request Procedure

Argosim keys are ordered through the standard License Key ordering procedure. See How to Request Keys - Overview. License keys are generated only when requested.

Obtaining Target ID software

Please refer to Appendix A for information related to this field.

CATIA Composer / 3DVia Composer

Reminder: CATIA Composer Release Composer R2015x DS Offering has been the subsequent Release of 3DVIA Composer Release Composer R2015 DS Offering.

All Generally Available CATIA Composer Products require FlexNet keys.

License Key Request Procedure

CATIA Composer license keys are ordered by the standard procedure. See “How to Request Keys – Overview”. License keys are generated only when requested. MyProductLine license key requests are entered by your sales representative.

Obtaining Target ID software

Please refer to Appendix A for information related to this field.

CATIA Magic / No Magic

Introduction

Products from the CATIA Magic and No Magic portfolios use FLEXlm licensing solution from release No Magic 19.0. License keys are release dependent.

	FLEXlm	DSLS	Managed DSLS
CATIA Magic	Up to No Magic 2024x	From No Magic 2024x	
CATIA No Magic	Up to No Magic 2024x	From No Magic 2024x	

Licensing Software and Key Style

CATIA Magic and No Magic license keys are ordered by the standard procedure. See “How to Request Keys - Overview”. License keys are generated only when requested. License key requests for CATIA Magic and No Magic products are entered by your sales representative.

Obtaining Target ID software

Please refer to Appendix A for information related to this field.

CATIA SCANeR

Licensing software availability

	DSLS	Managed DSLS
SCANeR	From SCANeR 2021	From SCANeR 2022

License keys compatibility

MaxReleaseDate is checked against the release date set in the code for CATIA SCANeR under DSLS licensing system.

Request Procedure

CATIA SCANeR license keys are ordered by the standard procedure.

See “How to Request Keys – OverviewHow to Request Keys – Overview”.

License keys are generated only upon request.

Obtaining Target ID software

Please refer to Appendix A for information about how to determine the DSLS ComputerID.

CCWAY License Keys

Introduction

This section covers the license keys required for the Highway for CATIA and CADD5 CCWAY (CCWAY2) products sold and distributed by Dassault Systèmes.

Licensing Software and Key Style

The keys for V2.19 through 2.21 (and optionally for V2.22 products) are based on IBM License Use Management (“LUM”) V4 technology and may be ordered as either networked (called “Concurrent Licenses” in LUM documentation), nodelocked, or High Availability License (“HAL”) keys. CCWAY Releases prior 2.22 are out of support.

Starting with V2.22, DSLS is available as licensing system mechanism.

Both CCWay keys are unconfigured, meaning that they are for a single product and do not contain Add-On Product trigrams.

From V2.23, DSLS is the unique licensing mechanism.

Obtaining Software to Determine DSLS Target ID

The utility used to obtain the Target ID is shipped with the product media for which DSLS is supported. It can also be downloaded at www.3ds.com/terms/software-keys (see Appendix A).

Forward and Backward Compatibility

Generic keys issued by IBM will not work with Dassault Systèmes distributed CCWAY products.

DELMIA Augmented Experience (Diota)

Licensing software availability

	FLEXIm	Hololens	DSLS	Managed DSLS
DELMIA Augmented Experience	All releases	Only for DL2-N Product		

Request Procedure

Delmia Augmented Experience license keys must be ordered through the standard procedure (see "How to Request Keys - Overview" section of this document).

License keys are generated and delivered only upon request.

Obtaining Target ID software

Please read Appendix A for information related to this field.

DELMIA License Keys

DELMIA Process Detailing and Validation

DSLS is available from release V5R19 as the licensing mechanism for DELMIA Process Detailing and Validation.

The licensing mechanism for releases prior V5R19 is LUM.

DELMIA Process Planning

DELMIA Process Planning license key management is based upon FLEXIm and DSLS according to products.

DELMIA Resource Modeling and Simulation

DSLS is available from release V5R19 as the licensing mechanism for DELMIA Resource Modeling and Simulation.

The licensing mechanism for releases prior V5R19 is LUM.

DELMIA Resource Modeling and Simulation license key management changed in R17SP7:

- For levels prior to DELMIA R17SP7, keys are based upon FLEXIm. Keys are downward compatible, i.e., an R16 key does not run R17, but an R17 key runs R16.
- For DELMIA R17SP7 and above, keys are based upon FLEXIm and “I4target” target ids instead of “ipconfig” target ids. Keys are downward compatible up to R17SP7, i.e., a R17SP7 key does not run R18, but an R18 key runs R17SP7.
- DELMIA provides two different versions of FLEXIm daemons to support these two licensing modes. If a user is moving up from R17 to R18, not needing to run the two levels at the same time, a new set of keys should be procured for the same license server. In that case, the user can only use one set of keys at the same time, as the two license daemons cannot run at the same time.
- If the user wishes to run two levels at the same time (R16 and R18 for example), installing two set of keys on the same machine does not work, as the two daemons cannot run concurrently. In that case, the user must install two set of keys for two different servers. A letter of parallel use will be provided so that the user understands that he possesses doubled the number of keys, but cannot use them concurrently.

Obtaining Target ID software

Please read Appendix A for information related to this field.

DELMIA Kineo

Licensing Software and Key Style

Kineo products use RLM keys. Concurrent and Machine Based keys are supported.

License Key Request Procedure

Kineo license keys are ordered by the standard procedure. See “How to Request Keys – Overview”.

Note: keys were previously requested using a special form. This procedure has been discontinued.

Obtaining Target ID software

Please refer to Appendix A for information related to this field.

DELMIA Operations, Intercim, Pertinence Suite & Velocity

Introduction

This section covers three product sets of Manufacturing Execution Systems and Manufacturing Operations products that share a common heritage of development by Intercim.

The first product set is the Intercim portfolio of products. These products were sold by Dassault Systèmes under a reseller agreement with Intercim prior to its acquisition.

The second product set is the Pertinence and Velocity portfolio.

The last product set is DELMIA Operations, which is the product subset inside DELMIA V5 portfolio encapsulating part of the legacy Intercim portfolio.

Dassault Systèmes acquired Intercim in March of 2011.

Licensing Software and Key Style

DELMIA Operations products require software license keys, based on proprietary license key management software. The technical term used for this key is “License File”. In order to request a License File, you must first install the DELMIA Operations software and prerequisites, and then generate a “locking code” using instructions provided with the product.

License Key Request Procedure

Use the following steps to gather the information needed to order keys for your software.

1. Install and configure the product software in the environment where it is to be run in production.
2. Generate the Locking Code using the instructions included in the product documentation. The locking code generated is unique to the specific environment in which it is created. Details of this procedure may be found in documentation that is included with the media. Below is a screen shot of the software panel to create the locking code.
3. Provide the locking code to your sales representative,
4. **In case of an installation** where the development environment database is a backup of the production database, the customer should not use the same "License Server" for both environments. When this occurs, the locking code for each environment is identical, and therefore both environments would use the same license. To avoid this, the production environment should always use a separate and dedicated license server.

The Dassault Systèmes Key Management Center will email the License File to you

Configured Keys

The term “configured keys” refers to a license key that authorizes multiple features or products. The License File is in effect a configured key: one License File is installed on the server host and this file authorizes all products for which license keys have been ordered for that server.

License Key Packaging

Changes to the authorized products, quantities, or duration require a replacement of the License File.

DELMIA Apriso

Licensing Software and Key Style

Apriso Licensing Software is specific. It is shipped with the product media.

License Key Request Procedure

Apriso is shipped with a registration application. Load this registration application, and enter the appropriate data. Then click on the “Save Registration”. This will create a file that you have to attach with the License Key Request Form into a mail to the Regional KMC or your sales representative.

Thus, compare to standard procedure (“How to Request Keys – Overview”), Apriso license keys must be exclusively ordered by email in order to attach the registration file, in addition to the Dassault Systèmes License Key Request Form.

DELMIA Ortems

Licensing Software and Key Style

DELMIA Ortems products Licensing Software is specific. It is shipped with the product media. A new License key generator – DSLS – is proposed starting with Ortems 8.2 and is the default one starting with Ortems 2019.

License Key Request Procedure

DELMIA Ortems license keys are ordered by the standard procedure. See "[How to Request Keys - Overview](#)". License keys are generated only upon request.

Obtaining Target ID software

Please refer to Appendix A for information related to this field.

DELMIAworks EnterpriseIQ

Licensing Software and Key Style

MLC licensing software used for DELMIAworks EnterpriseIQ products is proprietary and is distributed with the DELMIAworks EnterpriseIQ software.

For DELMIAworks Spreadsheet Server products within the DELMIAworks EnterpriseIQ portfolio, licensing software used is third-party. License keys issued are 25 alphanumeric characters codes which activate the software. Product activation is done in the software.

License Key Request Procedure

DELMIAworks EnterpriseIQ license keys and DELMIAworks Spreadsheet Server activation codes follow the standard procedure (see "[How to Request Keys - Overview](#)"). License keys and activation codes are generated and delivered only upon request.

DraftSight

Introduction

This section describes license keys for the Enterprise Pack offering for DraftSight products. This section does not apply to the free standalone version of DraftSight.

Licensing Software and Key Style

The keys require Dassault Systèmes License Server (“DSLS”) license management software. Please refer to the product documentation for the specific release of DSLS software needed. The DSLS license keys for these products are networked (“concurrent”) or failover (“redundant”). Nodelocked keys are not supported.

Obtaining Software to Determine DSLS Target ID

Please refer to Appendix A.

DYMOLA

Licensing software availability

	FLEXlm	DSLS	Managed DSLS
DYMOLA	All releases	From Dymola 2021x	

License keys compatibility

DYMOLA license keys delivered under FLEXlm and DSLS licensing mechanisms are forward and backward compatible with any release of the software.

Request procedure

DYMOLA license keys must be ordered through the standard procedure (see "[How to Request Keys - Overview](#)" section of this document).

License keys are generated and delivered only upon request.

ELECTRE

License Key Software

ELECTRE products use FlexNet License Key Software. This Licensing software is included on the media for the products.

License Key Request Procedure

ELECTRE keys are ordered by the standard procedure. See “How to Request Keys – Overview”. License keys are generated only when requested.

Licensing Scheme and Key Style

The licensing scheme for ELECTRE is Concurrent User.

License keys can be ordered either as floating or redundant. Nodelocked keys are not supported.

EDAT (ENOVIA Deployment Acceleration Toolkit)

Licensing Software and Key Style

The products of the portfolio ENOVIA EDAT use a specific Licensing Software.

License Key Request Procedure

ENOVIA EDAT license keys are ordered by the standard procedure. See “How to Request Keys - Overview”. License keys are generated only when requested. MyProductLine license key requests are entered by your sales representative.

Obtaining Target ID software

Please refer the Appendix A for information related to this field.

ENOVIA Engenuity

Introduction

This section covers the license keys required for the ENOVIA Engenuity products by Dassault Systèmes. The licensing software is a proprietary program delivered on the product media. The use of any ENOVIA Engenuity product, but ENOVIA Engenuity Web Services Suite, requires a single License File that is installed on the system running the Engenuity Server. This file enables all the products and quantities ordered.

ENOVIA Engenuity Web Services Suite incorporates its own separate license management software itself and thus has a separate license key file.

Starting with Engenuity R2017x, DSLS keys are supported for few products. The DSLS keys may be ordered as either server, or redundant keys.

License Key Request Procedure

The License File is generated only when requested. Engenuity key file requests are entered by your sales representative, using the standard License Key Order (“LKO”) procedure. The License File contains a customer name that appears on usage reports. Any replacement files requested by legacy customers will contain the same customer name as previously issued License File. For new customers the customer name will be the Customer Site name in the Dassault Systèmes ordering system.

Target ID

The Engenuity license key request does not require a target ID.

License Key Packaging

Dassault Systèmes will distribute a complete refresh of an existing license file in the case of replacement key requests.

ENOVIA Impararia

Licensing Software and Key Style

Starting with the release, the products of the portfolio ENOVIA Impararia for Licensing Softwares are specific.

License Key Request Procedure

ENOVIA Impararia license keys are ordered by the standard procedure. See “How to Request Keys - Overview”. License keys are generated only when requested. MyProductLine license key requests are entered by your sales representative.

Obtaining Target ID software

Please refer to Appendix A for information related to this field.

ENOVIA Pinpoint and Tego

Introduction

This section covers the license keys required for the ENOVIA Pinpoint product.

License Key Request Procedure

ENOVIA Pinpoint and Tego license keys are ordered by the standard procedure. See "How to Request Keys – Overview".

License keys are generated only when requested.

Licensing Scheme and Type and Key Style

The FlexNet license key for this product is networked ("concurrent") or nodelocked and is unconfigured, meaning that it is for a single product.

License Key Software requirements

Networked keys require FlexNet license manager server. This software is included on the distribution media with the product software.

ENOVIA Quality and Regulatory Management

Licensing Software and Key Style

The products of the portfolio ENOVIA QUMAS for Licensing Softwares are specific.

License Key Request Procedure

ENOVIA QUMAS license keys are ordered by the standard procedure. See “How to Request Keys - Overview”. License keys are generated only when requested. MyProductLine license key requests are entered by your sales representative.

Obtaining Target ID software

Please refer to Appendix A for information related to this field.

ENOVIAvpm

Introduction

This section covers the license keys required for the ENOVIAvpm products and configurations.

The licensing system for ENOVIAvpm V1R5 is LUM, starting from V1R6, DSLS is supported, and from V1R7, only DSLS is available.

Obtaining Software to Determine DSLS Target ID

Please refer to Appendix A.

Licensing Scheme and Key Style

The keys may be ordered as Networked, Nodelocked, or Redundant keys.

License Key Software requirements

Please refer to product documentation and program directories.

EXALEAD V6

Introduction

Until EXALEAD V6 R2018x release, EXALEAD products use exclusively an EXALEAD-specific license key management software.

The EXALEAD license tool is used to obtain the Host ID, which is used to order the license key. The license key itself is referenced in the installation of CloudView and used by CloudView at startup to activate the licensed features.

License Key Software and Key style

Starting with EXALEAD V6 Release R2019x:

- the EXALEAD-specific license key management software is still available as the default system
- and some products are also compliant with the DSLS Licensing keys

Please note that for products controlled by DSLS keys, those keys require Dassault Systèmes License Server (“DSLS”) license management software.

License Key Request Procedure

EXALEAD keys are ordered by the standard procedure. See “How to Request Keys – Overview”. License keys are generated only when requested.

Compatibility between DSLS and EXALEAD-specific key generator

With EXALEAD V6 Release R2019x, a subset of solutions and products is eligible to DSLS licensing and the core CloudView product (“CVS” trigram) is still controlled by an EXALEAD-specific key that needs to be requested with the proper host ID.

Please consider the following rules when selecting DSLS or EXALEAD-specific (aka “Legacy”) key generator type for products deployed on a given machine:

- 1) If this host ID is new (i.e. you do not have any EXALEAD-specific key installed base associated with this machine), you can benefit from DSLS management as long as you select DSLS key generator whenever this generator is available for the EXALEAD products you are requesting and that you do not mix several portfolio
- 2) If this host ID was already used with others products in DSLS context (i.e. compliant with point (1) above), you must continue requesting others EXALEAD products by applying the same rule (1).
- 3) If this host ID was already used in the past with EXALEAD-specific keys mainly, you should continue using EXALEAD-specific keys. This applies specifically if tokens were requested with this EXALEAD target ID.

The table below summarizes the eligible keys for the eligible solutions with EXALEAD V6 Release R2019x, depending on the solutions already deployed on that same machine:

Solution	NEW licence key request		EXISTING licence keys already deployed on the same machine									
	Keys managed by EXALEAD Keygen ("legacy")	Keys managed by DSLS	NONE	Legacy - OnePart	Legacy - OneCall	Legacy - Foundation	Legacy - Connectors	DSLS - OnePart	DSLS - OneCall	DSLS - Foundation	DSLS - Connectors	3DEXP Portfolio until R2019x
Legacy - OnePart	CVS, SMF, S1P, SMF-T, U1P, CXL, U1X, K1P, S1R, S1I/S1S/S1M/S1B	none	Yes	Yes	Yes	Yes	Yes	n/a	n/a	No	No	Yes
Legacy - OneCall	CVS, SMF, S1C, SMF-T, U1C, U2C, AD1/AD2/AD3	none	Yes	Yes	Yes	Yes	Yes	n/a	n/a	No	No	Yes
Legacy - Foundation	CVS, SMF, SMF-T, MBU, CXL, UFI, UED, CFI, CED	none	Yes	Yes	Yes	Yes	Yes	n/a	n/a	No	No	Yes
Legacy - Connectors	CEV, CSW, CAE, CAD, CSU, CSH, CEN, CXG, CDO, CFN, CSF, CLL, CLN, CCO, CES	none	Yes	Yes	Yes	Yes	Yes	n/a	n/a	No	No	Yes
DSLS - OnePart	Not applicable (OnePart is not yet eligible to DSLS management)		n/a	n/a	n/a	n/a	n/a	n/a	n/a	n/a	n/a	n/a
DSLS - OneCall	Not applicable (OneCall is not eligible to DSLS management)		n/a	n/a	n/a	n/a	n/a	n/a	n/a	n/a	n/a	n/a
DSLS - Foundation	CVS, SMF, MBU, CXL, UFI, UED, CFI, CED	SMF-T	Yes	No	No	No	No	n/a	n/a	Yes	Yes	No
DSLS - Connectors	CEV, CSW, CAE, CAD, CSU, CSH, CEN, CXG, CDO, CFN, CSF, CLL, CCO, CES	CLN	Yes	No	No	No	No	n/a	n/a	Yes	Yes	No

Notes:

- “Legacy” means that you’re deploying the solution using the EXALEAD-specific key generator
- “DSLS” means that you’re using - when applicable – the DSLS keys (others non-applicable products remain controlled by legacy key generator)
- please refer to section “Consistency of licensing mechanism - Examples” here below for examples
Others products and solutions might be covered in future releases

Obtaining Target ID software

The target id software depends on the license key management software selected when requesting License Keys:

- a) When DSLS licensing system mechanism is selected

Please refer to section DSLS of Appendix A.

- b) When the EXALEAD-specific licensing system mechanism is selected

Please refer to section EXALEAD of Appendix A.

The appropriate Host ID Generator for the operating system installed on your host computer must be downloaded from the Dassault Systèmes Software License Keys website:

<http://www.3ds.com/terms/software-keys/>

Note: the identifier of the machine where keys are installed is called by the generic term “Target ID” by the Key Management Centers (“KMCs”). The technical term used in EXALEAD documentation is “Host ID”.

You should download and extract the contents (instructions and executable) of the appropriate ZIP file below to the computer on which you will install the EXALEAD CloudView products. Select the file appropriate for the operating system you are using. Follow the instructions included with the tool to generate the Host ID. Use this number to fill in the key

request form that you are using. Information that is more detailed is provided in Appendix A, Exalead.

Consistency of licensing mechanism - Examples

Following examples are based on solutions and products covered with EXALEAD V6 Release R2019x.

Example - Foundation on a new machine

Let us consider that you want to deploy Foundation (CVS, SMF, SMF-T, MBU, UED, CCO, CLO) solution on a new host, with hostID H8402455ff7766e99783cd0fe00f1f1d6.

You can choose one of the following options:

Option 1 – Legacy

- EXALEAD-specific key generator : CVS, SMF, SMF-T, MBU, UED, CCO, CLO

Option 2 – DSLS + Legacy

- EXALEAD-specific key generator : CVS, SMF, MBU, UED, CCO
- DSLS : SMF-T, CLO

Cf. rule (1).

Example - Foundation and OnePart on a new machine

Let us consider that you want to deploy OnePart (CVS, SMF, S1P, SMF-T, U1P) and Foundation (CVS, SMF, SMF-T, MBU, UED, CCO) solutions on a new host, with hostID H8402455ff7766e99783cd0fe00f1f1d6.

You can choose only EXALEAD-specific key generator (legacy), since OnePart is not eligible to DSLS and you cannot deploy Foundation using DSLS if OnePart is deployed on the same host

- EXALEAD-specific key generator : CVS, SMF, S1P, SMF-T, U1P, CVS, SMF, SMF-T, MBU, UED, CCO

Cf. rules (1) and (3).

Example - Extend volume and add connector for a project that uses DSLS

Let us consider that you already have the following keys for a given machine for a project based on Foundation and CLO connector:

- EXALEAD-specific key generator : CVS, SMF, MBU, UED
- DSLS : SMF-T, CLO

If order to extend volume, you should request additional SMF-T keys. The connector you need in that example is CCO.

Since the project is already using DSLS, you can choose only DSLS mode (when applicable for the product). New request will be:

- EXALEAD-specific key generator : CCO (since CCO is not eligible to DSLS)

- DSLS : SMF-T

Cf. rule (2)

Example - Foundation on a machine that is already used by 3DEXPERIENCE - S1X

In that case, only EXALEAD-specific/legacy mode can be used.

Cf. rule (1).

GEOVIA MineSched

Licensing software availability

	Dongle-based	DSLS	Managed DSLS
GEOVIA MineSched	All releases	From MineSched 2020.1	From MineSched 2020.1

License keys compatibility

MaxReleaseDate is checked against the release date set in the code for GEOVIA MineSched under DSLS licensing system.

Licensing Client Level (release)	Max Release Date in the key must be higher or equal to:
MineSched 2020.1	April 24, 2020
MineSched 2021	October 9, 2020
MineSched 2022	October 8, 2021
MineSched 2023	October 7, 2022
MineSched 2024	November 3, 2023

Request Procedure

GEOVIA MineSched DSLS license keys are ordered by the standard procedure.

See “How to Request Keys – OverviewHow to Request Keys – Overview”.

License keys are generated only upon request.

Obtaining Target ID software

Please refer to Appendix A for information about how to determine the DSLS ComputerID.

GEOVIA Surpac

Licensing software availability

	Dongle-based	DSLS	Managed DSLS
GEOVIA Surpac	All releases	From Surpac 2020.1	From Surpac 2020.1

License keys compatibility

MaxReleaseDate is checked against the release date set in the code for GEOVIA Surpac under DSLS licensing system.

Licensing Client Level (release)	Max Release Date in the key must be higher or equal to:
Surpac 2020.1	May 1, 2020
Surpac 2021	October 9, 2020
Surpac 2022	October 9, 2021
Surpac 2023	October 14, 2022
Surpac 2024	October 13, 2023

Request Procedure

GEOVIA Surpac DSLS license keys are ordered by the standard procedure.

See “How to Request Keys – OverviewHow to Request Keys – Overview”.

License keys are generated only upon request.

Obtaining Target ID software

Please refer to Appendix A for information about how to determine the DSLS ComputerID.

GEOVIA Whittle

Licensing software availability

	Dongle-based	DSLS	Managed DSLS
GEOVIA Whittle	All releases	From Whittle 2022	From Whittle 2022

License keys compatibility

MaxReleaseDate is checked against the release date set in the code for GEOVIA Whittle under DSLS licensing system.

Licensing Client Level (release)	Max Release Date in the key must be higher or equal to:
Whittle 2022	October 29, 2021

Request Procedure

GEOVIA Whittle DSLS license keys are ordered by the standard procedure.

See “How to Request Keys – OverviewHow to Request Keys – Overview”.

License keys are generated only upon request.

Obtaining Target ID software

Please refer to Appendix A for information about how to determine the DSLS ComputerID.

Helix Interface for CATIA

Introduction

This section covers the license keys required for “Helix eXtended Interface for CATIA” (Helix-X) which is a complementary CATIA V5 product sold and distributed by Dassault Systèmes.

Obtaining Target ID

Please refer to Appendix A.

Licensing Scheme and Key Style

The keys for V1R12, V1R13 products (and optionally for V1R14 products) were based on IBM License Use Management (“LUM”) V4 technology and may be ordered as either networked (called “Concurrent Licenses” in LUM documentation), nodelocked, or High Availability License (“HAL”) keys.

Starting with V1R13, DSLS keys are supported. The DSLS keys for Helix products may be ordered as either networked, nodelocked, or redundant keys.

Both LUM and DSLS Helix keys are unconfigured, meaning that they are for a single product and do not contain Add-On Product trigrams

License Key Software requirements

The LUM V4 Runtime or DSLS software must be installed if networked or redundant keys are selected.

DSLS Release Dependency

For DSLS license keys , up to V1.15, the check is done on the Max Release number.

Licensing client level	License key max release number must be higher or equal to
V1R13	1
V1R14	2
V1R15	3

From V1.16, check is done on the key Max Release Date against the release date set in the code.

Licensing client level	License key max release date must be higher or equal to
V1R16	March 7, 2014
V1R17	March 13, 2015
V1R18	March 11, 2016
V1R19	March 10, 2017

V1R20	March 9, 2018
V1R21	March 8, 2019
V1R22	March 6, 2020
V1R23	March 5, 2021
V1R24	March 4, 2022
V1R25	March 3, 2022

ICEM DDN

License Key Software

These products use FLEXlm License Key Software.

License Key Request Procedure

ICEM DDN keys are ordered by the standard procedure. See “How to Request Keys – Overview”. License keys are generated only when requested.

Licensing Scheme and Type and Key Style

The licensing scheme for ICEM DDN is Concurrent User.

License keys can be ordered either as floating or redundant: Nodelocked keys are not supported.

ICEM Surf

License Key Software

The chart below shows the supported types of type of license management software based on software release.

Release	License Key Software
ICEM SURF \geq 4.8	FLEXIm
ICEM SURF 4.8.5	FLEXIm or FlexNet
4.11 \geq ICEM SURF \geq 4.9	FlexNet
ICEM SURF 4.12	FlexNet or DSLS **
ICEM SURF 4.13	DSLS **
ICEM SURF 2015 \geq	DSLS **

** The keys for the Theorem interfaces (K21-2 and K27-2) continue to be FlexNet.

License Key Request Procedure

ICEM Surf keys are ordered by the standard procedure. See "How to Request Keys – Overview". License keys are generated only when requested.

Obtaining Target ID

Please refer to Appendix A.

Licensing Scheme and Type and Key Style

The licensing schemes for ICEM Surf and ICEM Surf for Academia are for Concurrent User only.

The licensing scheme for ICEM Surf Student Edition is Nodelock only.

License keys cannot be ordered as floating or redundant.

DSLS Release Dependency

Check is done on the key Max Release Date against the release date set in the code.

Licensing client level	License key max release date must be higher or equal to
4.12	April 12, 2013
4.13	May 23, 2014
2015	Feb. 9, 2015
2016	Feb. 5, 2016
2017	Feb. 3, 2017
2018	Feb. 2, 2018
2019	May 3, 2019
2020	June 15, 2020
2021	June 23, 2021
2022	October 15, 2022
2024	November 24, 2023

INSPI Manufacturing

Licensing software availability

	Proprietary licensing	DSLS	Managed DSLS
Inspi Manufacturing	INSPIManuf2.0		

License keys compatibility

INSPI Manufacturing license keys are fully backward and forward compatible.

Request procedure

License keys must be ordered through the standard procedure (see "How to Request Keys - Overview" section of this document).

Iterop

Licensing software availability

	AES encryption	DSLS	Managed DSLS
Iterop	From Iterop 3.12 to 3.14		

License keys compatibility

Iterop license keys are fully backward and forward compatible.

Request procedure

License keys must be ordered through the standard procedure (see "How to Request Keys - Overview" section of this document).

NETVIBES License Keys

Introduction

The NETVIBES Multi-Dashboard for Enterprise product contains a search engine (CloudView) that requires a license key. The license key is referenced in the installation of CloudView and used by CloudView at startup to activate the licensed features.

License Key Request Procedure

NETVIBES Multi-Dashboard for Enterprise is ordered by the standard procedure. See "How to Request Keys – Overview". License keys are generated only when requested.

Obtaining Software to Determine Target ID (Host ID)

EXALEAD Host ID Generator tool is to be used to obtain the Target ID needed to generate NETVIBES Multi-Dashboard for Enterprise license keys). It can be downloaded on: <http://www.3ds.com/terms/software-keys/>

Note: Write the Host ID created by the Host ID tool into the Target ID field of the License Key Request form. Please write the Host ID exactly as it is displayed by the Host ID tool (the host ID is case sensitive).

Q-Checker for V5 & V4

Licensing software availability

	LUM	DSLS	Managed DSLS
Q-Checker for V5	Up to Q-Checker 5.3	From Q-Checker 5.1	From Q-Checker R5.9 ⁽¹⁾

⁽¹⁾ *Managed DSLS is not available for "nodelock" products.*

License keys compatibility

For DSLS licensing, license keys are *date dependent*: compatibility depends on the Release Date embedded in the software code, which is compared to the maximum Release Date authorized by the license key.

Licensing Client Level (release)	MaxReleaseDate in the key must be higher or equal to:
Q-Checker for V5 5.2	March 1, 2014
Q-Checker for V5 5.3	April 8, 2015
Q-Checker for V5 5.4	March 15, 2016
Q-Checker for V5 5.5	March 28, 2017
Q-Checker for V5 5.6	February 28, 2018
Q-Checker for V5 R5.7	February 28, 2019
Q-Checker for V5 R5.8	April 22, 2020
Q-Checker for V5 R5.9	April 23, 2021
Q-Checker for V5 R5.10	February 28, 2022

Request procedure

License keys must be ordered through the standard procedure (see "How to Request Keys - Overview" section of this document).

License keys are generated and delivered only upon request.

Q-Checker for V6

Licensing software availability

	LUM	DSLS	Managed DSLS
Q-Checker for V6	Up to 1.12	From 1.12	

License keys compatibility

For DSLS licensing, license keys are *date dependent*: compatibility depends on the Release Date embedded in the software code, which is compared to the maximum Release Date authorized by the license key.

Licensing Client Level (release)	MaxReleaseDate in the key must be higher or equal to:
Q-Checker for V6 2.1	April 23, 2014
Q-Checker for V6 2.2	March 03, 2015
Q-Checker for V6 2.3	February 24, 2016
Q-Checker for V6 2.4	February 03, 2017
Q-Checker for V6 2.5	March 20, 2018
Q-Checker for V6 R2.6	March 26, 2019
Q-Checker for V6 R2.7	March 24, 2020
Q-Checker for V6 R2.8	January 01, 2021
Q-Checker for V6 R2.9	December 13, 2021
Q-Checker for V6 R2.10	January 03, 2023
Q-Checker for V6 R2.11	Octobre 01, 2023

Request procedure

License keys must be ordered through the standard procedure (see "How to Request Keys - Overview" section of this document).

License keys are generated and delivered only upon request.

Quintiq

Licensing Software and Key Style

Quintiq products Licensing Softwares are specific.

License Key Request Procedure

Quintiq license keys are ordered by the standard procedure. See “How to Request Keys - Overview”. License keys are generated only when requested. MyProductLine license key requests are entered by your sales representative.

Obtaining Target ID software

Please refer to Appendix A for information related to this field.

Reqtify - ControlBuild - AUTOSAR Builder

Licensing software availability

	FLEXIm	DSLs	Managed DSLs
Reqtify (Named User)	All releases	From 2018	From 2021x
Reqtify (Concurrent Single Site)	All releases	From 2011.1	From 2021x
Reqtify (Concurrent Multi-Site)	All releases	From 2011.1	From 2021x
ControlBuild	All releases	From 2011.2	From 2023x
AUTOSAR Builder	All releases	From 2021x	

License keys compatibility

Before release 2016, license keys for Reqtify, ControlBuild and AUTOSAR Builder are rank dependent. From release 2016, they become date dependent. Compatibility depends on the Release Date embedded in the software code, which is compared to the maximum Release Date authorized by the license key.

Licensing Client Level (release)	Max Release Date in the key must be higher or equal to:
2016	June 12, 2015
2016 FD01	November 27, 2015
2017	June 10, 2016
2017 FD01	November 23, 2016
2018	June 9, 2017
2018 FD01	November 24, 2017
2019	June 8, 2018
2019 FD01	November 23, 2018
2020	June 14, 2019
2020x	November 22, 2019
2021x	October 30, 2020
2022x	October 29, 2021
2023x	November 4, 2022
2024x	November 3, 2023

Request procedure

Reqtify – ControlBuild – AUTOSAR Builder license keys must be ordered through the standard procedure (see "How to Request Keys - Overview" section of this document).

License keys are generated and delivered only upon request.

SFE

Licensing software availability

	SFELic	DSL S	Managed DSL S
SFE	All releases	From SFE 2018	From SFE 2021

License keys compatibility

MaxReleaseDate is checked against the release date set in the code for SFE under DSL S licensing system.

Request procedure

License keys must be ordered through the standard procedure (see "How to Request Keys - Overview" section of this document).

License keys are generated and delivered only upon request.

Simulayt

License Key Request Procedure

License keys are generated only when requested. Simulayt key requests are entered by your sales representative, using the standard License Key Order (“LKO”) procedure.

Obtaining Software to Determine Target ID or Host ID

A software utility to determine Target ID is available for download at www.3ds.com/terms/software-keys web page.

License Key Software requirements

FlexNet license server, version 10.8 or higher, is supported. DSLS is supported for Simulayt for V5 from release 5.26 and for Simulayt for V6 from release 6.16x.

Configured Keys

For FlexNet licensing Mechanism, Simulayt keys are simple unconfigured keys: FlexNet PACKAGE keys are not used.

License Key Packaging

Dassault Systèmes will distribute a complete refresh of an existing license file in the case of replacement key requests.

SIMULIA Abaqus

Licensing software availability

	FLEXlm	DSLS	Managed DSLS
SIMULIA Abaqus	All releases	From 6.12	From Abaqus 2019

Request Procedure

SIMULIA Abaqus license keys must be ordered through the standard procedure (see "How to Request Keys - Overview" section of this document).

License keys are generated and delivered only upon request.

SIMULIA CST Studio Suite and SIMULIA Opera

Licensing software availability

	SECMagus	IdEMworks	FLEXIm	DSLS	Managed DSLS
CST Studio Suite (standalone)			All releases		
CST Studio Suite (floating)			All releases	From CST S2 2021	From CST S2 2022
CST Studio Suite Antenna Magus (standalone)	All releases		All releases		
CST Studio Suite Antenna Magus (floating)	All releases		All releases	From CST S2 2021	
CST Studio Suite IdEM (standalone)		All releases	All releases		
CST Studio Suite IdEM (floating)		All releases	All releases	From CST S2 2021	
Opera (Standalone)			All releases		
Opera (floating)			All releases	From CST S2 2021	

	LM-X	DSLS	Managed DSLS
Opera (legacy)	All releases		

Request Procedure

SIMULIA CST Studio Suite and SIMULIA Opera license keys must be ordered through the standard procedure (see "How to Request Keys - Overview" section of this document).

License keys are generated and delivered only upon request.

SIMULIA Isight

Licensing software availability

	FLEXlm	DSLS	Managed DSLS
SIMULIA Isight	All releases	From 5.7	From Isight 2019

Request Procedure

SIMULIA Isight license keys must be ordered through the standard procedure (see "How to Request Keys - Overview" section of this document).

License keys are generated and delivered only upon request.

SIMULIA PowerFLOW Suite

Licensing software availability

	FLEXlm	RLM	DSLS	Managed DSLS
SIMULIA PowerFLOW Suite	Up to PowerFLOW 2013to2017	All releases	From PowerFLOW 2020	From PowerFLOW 2020

Request Procedure

License keys for SIMULIA PowerFLOW Suite must be ordered through the standard procedure (see "How to Request Keys - Overview" section of this document).

License keys are generated and delivered only upon request.

SIMULIA Simpack

Licensing software availability

	Olicense	DSLS	Managed DSLS
SIMULIA Simpack	All releases	From Simpack 9.10	From Simpack 2020

License keys compatibility

For DSLS licensing, and from release Simpack 2022, license keys are date dependent: compatibility depends on the Release Date embedded in the software code, which is compared to the maximum Release Date authorized by the license key.

Request procedure

License keys must be ordered through the standard procedure (see "How to Request Keys - Overview" section of this document).

License keys are generated and delivered only upon request.

SIMULIA Tosca

Licensing Scheme and Type and Key Style

SIMULIA Tosca uses FlexNet Publisher License Keys. License keys can be ordered either as floating or redundant. Nodelocked keys are not supported.

License Key Request Procedure

SIMULIA Tosca keys are ordered by the standard License Key ordering procedure. See How to Request Keys – Overview. License keys are generated only when requested.

Obtaining Target ID software

Please refer to Appendix A for information related to this field.

SIMULIA Wave6

Licensing Scheme and Type and Key Style

SIMULIA Wave6 products Licensing Software is specific, based on the FlexLM software.

License Key Request Procedure

SIMULIA Wave6 keys are ordered by the standard License Key ordering procedure. See How to Request Keys – Overview. License keys are generated only when requested.

Obtaining Target ID software

Please refer to Appendix A for information related to this field.

SIMULIA XFlow

Licensing Scheme and Type and Key Style

SIMULIA XFlow products Licensing Software is specific, based on the Reprise License Manager (RLM) software. The standard 3DS key generator - DSLS - is available along with all the XFlow items starting XFlow 2017x release; DSLS is the default key generator. RLM remains as an alternate key generator.

License Key Request Procedure

SIMULIA XFlow keys are ordered by the standard License Key ordering procedure. See How to Request Keys – Overview. License keys are generated only when requested.

Obtaining Target ID software

Please refer to Appendix A for information related to this field.

License keys compatibility

For DSLS licensing, license keys are *date dependent*: compatibility depends on the Release Date embedded in the software code, which is compared to the maximum Release Date authorized by the license key.

Licensing Client Level (release)	Max Release Date in the key must be higher or equal to:
XFlow 2019x	December 19, 2018
XFlow 2020	June 26, 2019
XFlow 2020x	December 31, 2019
XFlow 2021	June 26, 2020
XFlow 2021x	January 14, 2021
XFlow 2022	August 13, 2021
XFlow 2022x	September 14, 2022
XFlow 2023	February 2, 2023
XFlow 2023_R1	July 23, 2023
XFlow 2024	November 10, 2023

SIMULIA Simpoe

Licensing Software and Key Style

SIMPOE Licensing Software is specific. It is shipped with the product media.

License Key Request Procedure

SIMPOE licensing application shipped with the product includes a registration tool. Load this registration application, and enter the appropriate data. Then click on the “Save Registration”. This will create a file that you have to attach with the License Key Request Form into a mail to the Regional KMC or your sales representative.

Thus, compare to standard procedure (“How to Request Keys – Overview”), SIMPOE license keys must be exclusively ordered by email in order to attach the registration file, in addition to the Dassault Systèmes License Key Request Form.

SIMULIA Wast-Net (MiG)

Licensing software availability

SIMULIA Wasp-Net products Licensing Software is specific, based on the WIBU software.

Request Procedure

Delmia Augmented Experience license keys must be ordered through the standard procedure (see "How to Request Keys - Overview" section of this document).

License keys are generated and delivered only upon request.

Obtaining Target ID software

Please refer to Appendix A for information related to this field.

Appendix A. Determining the Target ID

General

Most types of license key can only work on the specific piece of equipment for which the key was created: often

- a network adapter identified by its MAC address or a value calculated from its MAC address
- CPU, identified by a hardwired motherboard identifier.

Dassault Systèmes Key Management Centers refer to this identifier as the “Target ID”, regardless of the license key software used (FLEXIm, DSLS, BPA, etc.). See below for the actual terminology used by the license key software for each product.

In the standard procedure for requesting key, for most products, you are asked to provide the Target ID of the device on which the license key will be enrolled.

You will find hereafter some indications on how to get this targeted, according to the licensing management software or portfolio.

DSLS

Format

For all supported OS except Windows Server 2016, the target ID is composed of 3 letters, an "-" and 16 hexadecimal characters [0..9] and [A..F]

Example : JZR-423010145E64B1A4

For Windows Server 2016, the target ID is composed of 3 letters, an "-" and 42 hexadecimal characters [0..9] and [A..F]

Example : RXG-00F3DBC96159E7F0719197955F78E54C44360A5ADF

To obtain the target ID, run `DSLicTarget.exe -t` on the machine on which the license key will be installed

Obtaining Software to Determine Target ID

The utility used to obtain the Target ID is shipped with the product media. After media installation, by default, this utility `DSLicTarget` is located in:

For instance

On Windows 64b:

```
C:\Program Files\Dassault Systemes\DS License Server\win_b64\code\bin
```

On AIX:

```
/usr/DassaultSystemes/DSLicenceServer/aix_a64/code/bin
```

It can also be downloaded at www.3ds.com/terms/software-keys (available for win_64, win_32, AIX, Linux and Solaris)

Instructions

The utility should be run on the machine hosting DSLS where the keys will be enrolled.

Run `DSLicTarget -t` to obtain this machine DSLS TargetID

3DEXCITE

DELTAGEN

TargetID is the MAC Address (remove : or -).

Provide also the hostname in the comment of the License Key Request Form or to the Sales Representative.

PICTUREBOOK

TargetID is hostname and up to three host network card MAC Addresses (remove : or -) of networks cards for the host.

Separate hostname, and MAC Addresses with blank if several are provided.

MAC Address

- On Windows, the MAC Address can be retrieved by `ipconfig /all`.
- On linux, the MAC Address can be retrieved by `ifconfig -a`.
- On others systems, you can retrieve the MAC Address in the hardware parameters panel.

Hostname

- On Windows and linux, the hostname can be retrieved by “hostname”.
- On others systems, you can retrieve the hostname on the hardware parameters panel.

Reqtify / ControlBuild / AUTOSAR Builder

License keys for those products use standard FlexNet software tools and procedures.

Windows and Linux

The Target ID is the *active* network adapter MAC Address composed of 12 hexadecimal characters [0..9] and [a..f]

- On Windows, to obtain the target ID , run

```
ipconfig -all
```

The MAC address of the machine is identified following the “Physical Address.” line in the “Ethernet adapter Local Area Connection” section. Remove the “-“ from the value.

- On linux, to obtain the target ID, run

```
ifconfig -a | grep -i hwaddr
```

Example of the value returned by the command:

```
eth0      Link encap:Ethernet  HWaddr 00:15:17:4B:25:64
```

From the 17-digit string in the line returned by the `ifconfig` command, remove all the colons.

SUN Solaris

The Target ID is the ID of the machine (CPU identifier)

- On Solaris, to obtain this target ID, run `hostid`.

Example of the value returned by the command:

```
22a024eb
```

DELMIA Augmented Experience

In order to request license keys for DELMIA Augmented Experience solutions, you must first identify the computer or server on which the license files will be installed. To identify the device:

(1) Download and unzip the following file:

- [DELMIA AE GetHostID.zip](#)

(2) Run the following command:

```
GetHostID.bat
```

(3) Send back the two text files generated (`ipconfig_all.txt` and `lmcomposite.txt`) to your Dassault Systèmes sales contact.

For HoloLens 2 licenses

(1) Download and unzip the following file:

- [DELMIA AE HoloLens2 DeviceID Tool.zip](#)

(2) Follow the instructions from the PDF

```
DPforHoloLens_Installation.pdf
```

(2) Send back the *DeviceID.txt* file generated to your Dassault Systèmes sales contact.

DELMIA Ortems

Format:

The Lock ID is composed of 6 hexadecimal characters [0..9] and [a..f] , the 1st one is the digit "4", with a dash character "-" separating the 5 following characters,

A slash character as "/", as a separator,

If you want to use your external authentication (Windows Active Directory), then it is set to 'Y',

If you want to use Delmia Ortems authentication, then it is set to 'N'.

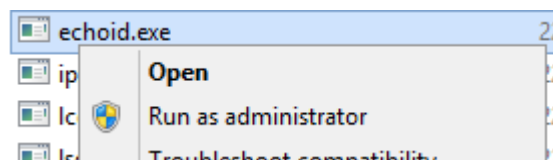
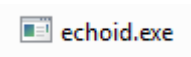
Example: 4-1B8F6/Y

Action: To obtain the lock ID, run the Echoid.exe, program from the SentinelLM software package provided within the installation as described below

Step 1 - Log on to the Licence server.

Step 2 - Go to the Ortems installation folder: ...\\ORTEMS\admin (or ...\\ORTEMS\\APS\admin)

- look for the program echoid.exe. Be careful, don't search for "echoid.exe" files in order to launch it from the search result window because the lock-code will not be correct.
- once you see the program echoid.exe, **right click** on the file > then **"Run as administrator"** if available ("Open" if not present)

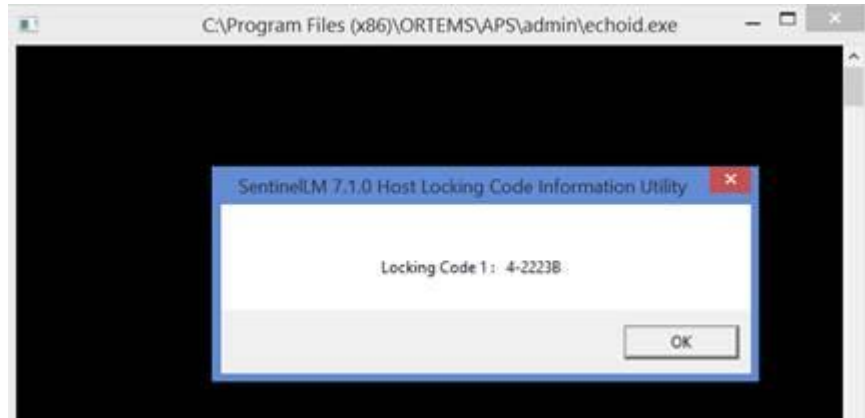


Be careful, if you don't find this echoid.exe file, you may try to launch a search for this file in Windows Explorer. You'll find the file in the result window: DON'T LAUNCH this program from this window otherwise the lock-code information is not correct. You first have to open the folder containing this file (right click on the file to select this choice) before launching this echoid.exe program.

A DOS command prompt window will show up superposed with a second window called « *SentinelLM 7.1.0 Host Locking Code Information Utility* »

Step 3 - Recover and communicate us the code located after the "Locking Code 1" (this code must start with '4-')

Example:



ENOVIA Deployment Acceleration Toolkit (EDAT)

Some ENOVIA EDAT products request a license key where you must provide the MACAddress, described below.

TargetID is the MACAddress (keeping : or -) and can be retrieved by `ipconfig /all`.

Windows

Format: The target ID is the mac-address composed of 17 hexadecimal characters [0..9] and [a..f], separated by a "-" character or a ":" character

Example: 00-15-58-2d-80-b3

Action: To obtain the target ID, run the `ipconfig -all` command. The mac-address of the machine is defined following the "Physical Address." line in the "Ethernet adapter Local Area Connection" section

ENOVIA Impararia

For the ENOVIA Impararia products licensed by *Impararia*, please to note that the registration file is mandatory.

Request the registration file to the customer each time and attach it to the LKO prior submission.

Please provide the Target ID by retrieving the address of Host ID listed under the BIOS line of this file.

EXALEAD

EXALEAD employs an EXALEAD-specific licensing management system. The EXALEAD host ID Generator utility must be run on the CloudView server machine to identify the machine's host ID. A platform-independent license key text file will be generated based upon this host ID. License management of optional EXALEAD products and connectors is achieved by 'feature' entries in the CloudView license key file.

Note: EXALEAD CloudView requires the Host ID of the machine in which CloudView will run.

applies to

- **EXALEAD CloudView and EXALEAD CloudView optional products**
- NETVIBES Multi-Dashboard for Enterprise

Windows

Format: 33 alphanumeric characters

Example:

```
H8402455ff7766e99783cd0fe00f1f1d6
```

Action:

Use the following path: `<ROOTDIR>\tools` , where `ROOTDIR` is the directory where CloudView was unpacked.

Issue the command

```
nghostid
```

The Host ID of your machine is displayed.

Linux

Format: 12 alphanumeric characters

Example:

```
001a64667e68
```

Action:

Use the following path: `<ROOTDIR>/tools` where `ROOTDIR` is the directory where CloudView was unpacked.

Issue the command

```
./nghostid
```

The Host ID of your machine is displayed.

Solaris

Format: 8 alphanumeric characters

Example:

```
35422284
```

Action:

Use the following path: `<ROOTDIR>/tools` where `ROOTDIR` is the directory where CloudView was unpacked.

Issue the command

```
./nghostid
```

The Host ID of your machine is displayed.

ENOVIA Pinpoint and Tego

The Target ID to be used on the License Key Request form can be determined by the following procedure:

On Linux, open a command window and run the command string as listed below to get the MAC address.

```
ifconfig -a | grep -i HWaddr
```

Example of the value returned by the command:

```
eth0      Link encap:Ethernet  HWaddr 00:15:17:4B:25:64
```

From the 17-digit string in the line returned by the ifconfig command, remove all the colons and put the result of this command into the “Target ID for Requested License Key” field on the License Key Request. This will be a 12 hexadecimal string.

The Hostname is also required to process the License Key request. The Hostname can be determined by the command string below:

```
hostname
```

In the Comments field on the License Key Request form, put “Hostname=” followed by the result of the above command.

ENOVIA QUMAS

The Target ID will depend on one of the 4 licensing key generators available for this portfolio:

1. NetDimensions for QUMAS:
 - To find the IP address, please do the following:
 - Windows machine: Open the Command prompt (cmd.exe) and type ipconfig. The IP address will be displayed.
 - Linux machine: Right click on the network icon in your notifications area and select Connection Information. The IP address will be displayed.
 - Mac machine: Select the Apple icon on the upper-left corner of the screen. Choose System Preferences and then Network. Select your connection and the IP address should be displayed.
2. Workshare for QUMAS:
 - You must provide one of the 2 possible keywords: 'Production' or 'Non production'
3. Adlib for ENOVIA QUMAS:
 - You must provide one of the 2 possible keywords: 'Production' or 'Non production'
4. SAP for QUMAS

- You must provide one of the 2 possible keywords: 'Production' or 'Non production'

FLEXIm or FlexNet Publisher

Applies to

- **DELMIA Process Planning Configurations and Shareables and Resource Modeling and Simulation Configurations**
- **3DVIA Virtools**
- **ICEM Surf**
- **Gehry Technologies Digital Project**
- **SIMULIA Tosca**
- **CATIA Magic and No Magic**

For Dymola FLEXIm keys, see section below.

Windows

Format

The Target ID is the MAC address of the Network Interface Card (Ethernet card) used by the application.

The format is 12 hexadecimal characters (0-9, A-F).

Example

0015582d80b3

Instructions

Enter the following command on the command line

```
ipconfig -all
```

The target ID is the value shown for "Physical Address"

Sun Solaris

Format

Eight hexadecimal digits (0-9, A-F)

Example

22a024eb

Instructions

Enter the following command

```
usr/ucb/hostid
```

IBM AIX

Format

The Target ID is the Machine ID number of the system. The format is 12 numeric digits.

Example

000313703100

Instructions

Enter the following command

```
usr/bin/uname -m
```

HP-UX

Format

“0x” followed by 12 hexadecimal digits.

Example

0x80000978feb9

Instructions

Enter the following command

```
/etc/lanscan
```

and find the Address for lan0

SGI Irix

Enter the following command

```
/etc/sysinfo -s
```

Terminology

This hardware identifier is variously referred to by FLEX community as “MAC Address”, “Target ID”, and other terms.

Simulayt

An optional utility is available to determine host ID. This utility can be downloaded from the www.3ds.com/terms/software-keys web site. It is also available in the media distributed for the release of software ordered. It will need to be unzipped before being executed.

If the utility available is not available, the ipconfig command can be used, as outlined below.

Applies to

- **Simulayt V5 and V6**

Windows

Format: 33 alphanumeric characters

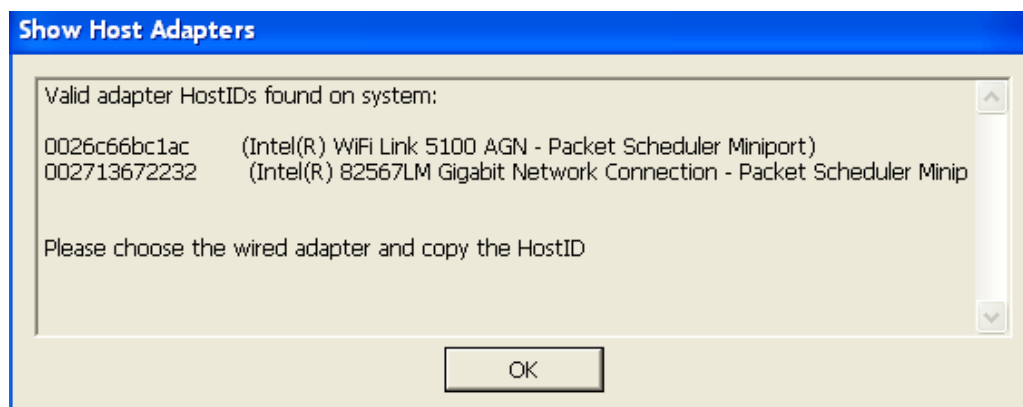
Example:

```
H8402455ff7766e99783cd0fe00f1f1d6
```

Action:

- 1) Optionally, Using the Simulayt Host ID tool:

Run the program DisplayHostID.exe. A window will be displayed that shows the Host ID to used for the License Key Order. Please see below.



- 2) Or, enter the following command on the command line in a command window

```
ipconfig -all
```

The target ID is the value shown for “Physical Address”

FLEXIm for Dymola

Format

The target ID is the MAC address. It is composed of 12 hexadecimal characters (0-9, A-F).

For redundant keys, more than one target ID is needed. For DYMOLA keys, several MAC address (maximum 3), are processed as a single string field separated the addresses by a blank.

Example

For two MAC addresses

```
0015582d80b3 00ff68fbb889
```

Instructions

Windows

Choose one of the following instructions:

Enter “Help > License > Details” in DYMOLA and press copy to clipboard’ to paste the target ID.

or

Enter the following command

```
lmhostid
```

and print the result. See DYMOLA User Manual, Vol. 1, Section 6.5

or

Enter the following command

```
ipconfig -all
```

Read the “Physical Address” from the section

```
Ethernet Adapter Local Area Connection
```

Remove the “-“ from the value.

Sun Solaris

Choose one of the following instructions:

From the directory

```
$dymola/bin/
```

enter the following command

```
./lmutil hostid -hostdomain
```

or

Enter the following command

```
ifconfig -a | grep HW
```

and select the right interface

```
eth0
```

LUM Version 4

Applies to

- CATIA V4 and V5 Configurations and Shareables
- DELMIA V5 Configurations and Shareables
- ENOVIA V5 Configurations and Shareables
- VPM V4
- Product Manager
- CCWay
- Helix

Support of LUM licensing technology ended on Dec 31, 2013.

In addition, V5 products like 3DLive that access any of these types of data will require a connector, which will require a LUM V4 key.

Format

8 hexadecimal characters (0-9, A-F)

Example

0a484b66f

Instructions

For AIX®:

Use the following path **/usr/opt/ifor/bin**

Issue the command

```
i4target -OI
```

Note: the command "uname -m" is obsolete and must not be used.

The AIX Preferred LUM Target ID of your machine is displayed first. If you are using LUM 4.6.6 or higher, use the AIX Preferred LUM Target ID.

The AIX Target ID is shown second. If you are using an earlier version of LUM, use the AIX Target ID.

For HP-UX or Solaris with LUM installed:

Issue the command

```
i4target -O
```

Using path

For HP-UX:

```
opt/lum/ls/os/hpux/bin/
```

For Solaris

```
opt/lum/ls/os/solaris/bin/
```

The Target ID of your machine is displayed.

For HP-UX or Solaris without LUM installed:

Refer to the operating system support information provided by the manufacturer for the appropriate command syntax to determine the Target ID.

For Windows:

Issue the command

```
i4target -O
```

to read the Target ID.

Target IDs for Windows are found by reading the network adapter MAC address installed and configured on the machine. If a device driver for a network adapter is detected, the Target ID is displayed, with win32mac as the target type and a symbolic name for the device driver from which the Target ID was taken. For example:

```
2857a1aa win32mac MAC/LLA Address IBMTRP1
```

The Target ID also appears when the network license server is started or when you run a license-enabled product.

The entry I4DRIVER is stored in the Windows registry, in the path

```
HKEY_LOCALMACHINE\SOFTWARE\IBM\License Use Runtime
```

to record the name of the network device driver used to retrieve the Target ID. If you remove the adapter or the device driver, licenses generated to work with this Target ID will no longer be usable.

A Target ID is displayed.

For HAL Clusters:

Licenses for a HAL Cluster require an additional identifier beyond the Target ID. This identifier is called Cluster ID.

The Cluster ID is automatically generated by License Use Management when a HAL Cluster is created and activated. The Cluster ID is shown in the **Clusters** panels of the i4blt graphical user interface or by issuing the command

```
i4blt -H s -N cluster_name
```

where ***cluster_name*** is the name assigned to the cluster when it was created.

To request a license keys for a HAL Cluster, both the Target ID and the Cluster ID are required.

Terminology

LUM V4 uses the same term for the hardware equipment identifier as the Dassault Systèmes KMCs: “target id”.

AITAC Smart Drawings

For the AITAC Smart Drawings products licensed by FlexLM, please to note that the registration file is mandatory.

Prior to submitting your LKO, you should deliver the Registration file, produced by the AITAC Target Id tool.

Format: 1 or 2 character strings separated by a blank character, at the 6th line of the text produced by the AITAC Target Id tool.

Example: SHW91007 0017a477c47e

Action: Paste the AITAC Mac Address given by the Target Id Tool

BIOVIA

For the BIOVIA Pipeline products, the Target ID is the Dassault Systèmes Customer Site ID found on your end-user order form or purchase order.

For the BIOVIA product licensed with FlexLM, the Target ID is OS dependant, as following:

On Windows:

Type the following in the Command Prompt or DOS window > ipconfig /all
targetID is Host Name and Ethernet adapter Local Area Connection Physical Address
Mac Address separated by a blank

On Linux :

Obtain the Host Name:
> hostname
Obtain the Ethernet Mac Address:
> /sbin/ifconfig eth0
This returns information in the following format:
eth0 Link encap:Ethernet HWaddr XX:XY:YY:YZ:ZY:ZZ
Remove the colons to yield your twelve digit Ethernet Mac Address (e.g.,
XXXYYYYZZYZZ).
targetID is Host Name and Ethernet adapter Local Area Connection Physical Address
Mac Address separated by a blank.

For the BIOVIA products licensed with BIOVIA Draw, the Target ID is the Dassault Systèmes Customer Site ID found on your end-user order form or purchase order.

For the BIOVIA products licensed with CosmologicRLMExt, the Target ID is the Dassault Systèmes Customer Site ID found on your end-user order form or purchase order.

BPA

BPA Proprietary – First group

Applies to

CA9, CM9, CO9, CV9, CW9, CX9, SX9, FP9, PS9, SL9, CH9, WC9, PF9

Format

The target ID is the MAC address of the Ethernet card used by the application. The format is

XX-XX-XX-XX-XX-XX

where “X” is a hexadecimal character in uppercase.

Example

00-15-58-2D-80-B3

Instructions

Run the following command

```
ipconfig -all
```

Read the “Physical Address” from the section

```
Ethernet Adapter Local Area Connection
```

BPA Proprietary – Second group

Applies to

AS9, CD9, CS9, LM9, RM9, RX9, SP9, SS9

Format

The target ID is composed of 32 characters in uppercase coming from the database ID connected to ENOVIA SmarTeam.

Example

001A251646F31A251646F31A251646F3

BPA Proprietary – SD9

Format

The target ID has no designated format. It can contain up to 50 characters.

Instructions

Run the following command

SD9-TargetID.exe

DELMIA Kineo

Format

The target ID is the MAC address of the Ethernet card used by the application. The format is

XX-XX-XX-XX-XX-XX

where "X" is a hexadecimal character in uppercase.

Example

00-15-58-2D-80-B3

Instructions

Run the following command

```
ipconfig -all
```

Read the "Physical Address" from the section

```
Ethernet Adapter Local Area Connection
```

Abaqus FlexNet Licensing

To obtain a license to run Abaqus Version 6.2-7 and later, you must provide the host (computer) ID information for the computer that will be used for the network license server. On Windows platforms, a network card is required to provide the unique host ID. Abaqus provides a small executable file that can be downloaded and run on your computer to extract the host ID that is used to generate a license keys for your computer. This executable is platform specific, so you must use the one corresponding to your computer platform. Abaqus FlexNet licensing uses a different executable than the previous Abaqus Elan licensing that is installed with Abaqus Version 6.2-6 and earlier. **You cannot use system commands to extract the host ID for your computer.**

To download the executable for extracting the hostID for your platform, click on the corresponding **platform** in the following table. Save the executable to a writable directory on your computer. Make sure that the permissions on the file allow you to execute it (use `chmod 755 lmhostid.exe` on UNIX platforms). Then run the executable at a command prompt to extract the host ID.

Note: If you are using Windows Explorer, double-clicking the `lmhostid.exe` utility will NOT allow you to view the hostID output, since the command window will immediately close. Open a command prompt by selecting **Start → Programs → Accessories → Command Prompt**. Then enter the command "`lmhostid`" and press **Enter**.

Platform
Windows x86-32/x86-64
Linux x86-32/x86-64
Linux Itanium
SGI Altix – Requires lmhostid utility.
IBM AIX
HP-UX Itanium ¹
HP-UX PA-RISC
SGI-64 Irix 6.5
Sun Solaris
HP ALPHA

Example:

```
mysgi@/usr/tmp/example->ls -og lmhostid.exe
-rw-r----- 1 627200 Nov 26 12:02 lmhostid.exe
mysgi@/usr/tmp/example->chmod 755 lmhostid.exe
mysgi@/usr/tmp/example->ls -og lmhostid.exe
-rwxr-xr-x 1 627200 Nov 26 12:02 lmhostid.exe
mysgi@/usr/tmp/example->./lmhostid.exe
lmhostid - Copyright (C) 1989-2005 Globetrotter Software, Inc.
The FLEXlm host ID of this machine is ""d2100546 d2100546 d2100546
d2100546""
Only use ONE from the list of hostids.2
```

In the above example the hostID would be **d2100546**.

Alternative Windows instructions

On Windows platforms you can also use the `lmtools` graphical utility to extract the hostID and place it in a test file.

1. Run the `lmtools.exe` program.
2. Click the **System Settings** tab.

3. Click the **Save HOSTID Info to a File** button.
4. Name the file using your company name and/or Simulia SiteID.
5. Attach the file to your E-mail message, when requesting a license.

Notes:

- ¹The host ID string on Itanium computers running HP-UX may be over 40 characters long. A host ID string might look like "ID_STRING=e8d10fb3-901e-d511-ab30-080009e44915" where the characters "ID_STRING=" are part of the actual string and must be included for the license file to be read correctly.
- When installing Abaqus licensing on a laptop machine which has more than one network adapters, you need to choose the system ID that corresponds to the network adapter that will remain active when the machine is disconnected from the network. For power saving reasons, a laptop may shutdown your network adapter when it is not in use. You must configure your system to prevent this. Configuration instructions vary by laptop model and network adapter model.

Networked License Keys – Theory of Operation

Each session of the licensed key enabled software must contact the license server prior to beginning execution and periodically while the session is running. Therefore, session must have uninterrupted communication with the license server until it ends. If the license server or the computer on which it runs fails, it should be restarted as quickly as possible to ensure minimal interruption of the application software.

The license server continuously tracks which tokens or keys on the network are “available” and which are “in use.” Prior to beginning a session, the application software requests tokens or keys from the license server. If tokens or keys are in the available pool, the license server transfers them from the available pool to the in-use pool, and they remain in the in-use pool until the end of the session. If no tokens or keys are available, the session exits with an error message stating that no tokens or keys are available. At the normal completion of the analysis or interactive session, the application software notifies the license server and the server returns the tokens or keys to the available pool. If the session aborts, the tokens are returned immediately.

Quintiq

For the Quintiq products licensed by *Quintiq External*, please attach the Quintiq License Key Request file obtained with the Quintiq License Key Request Tool, Please copy in the Target ID field the following information available in this file:

- the hostname
- the MACAdresse(s)
- the HD SN
- the SiteKey if it already exists, n.a. otherwise

separated with a blank.

An added information is requested to define the hosting system, where 3 values are possible:

1. no value, by default: it means it is a Quintiq hosting system,
2. Amazon: it is an Amazon hosting system,
3. Azure: it is an Microsoft Azue hosting system.

For the Quintiq products licensed by *Quintiq Map External* , please provide IP address or pin code for Map and Guide Server.

SFELic

For any type of key, you have to provide the SFELic Server target ID. To obtain this SFELic target ID, run the SFE utility on the host on which SFELic is installed: this utility is named SFELicHostId on all platforms or SFELicTool on Windows.

Save the SFELicHostidInfo.txt file. This file contains your SFELic Server host name and its MACAddress.

In this SFELicHostidInfo.txt file, add:

- For nodelocked keys: your host IP number or, for DHCP, IP range.
- For floating keys:
 - For SFELic licensing: the set of authorized IP ranges

Attach the modified SFELicHostidInfo.txt

SIMULIA CST Studio Suite and SIMULIA Opera

For any type of key based on **FLEXIm technology**, you have to provide a target Id

Format: The target ID or HostID is the mac-address composed of 12 hexadecimal characters [0..9] and [a..f]

Example: 0015582d80b3

Action: To obtain the target ID, run the ipconfig –all command.

The mac-address of the machine is identified following the “Physical Address.” line in the “Ethernet adapter Local Area Connection” section.

Remove the “-“ from the value.

For any type of key based on **AntennaMagusExt** license key generator, you have to provide a target Id, as:

Format: <MAC ID>/<Code specific to Antenna Magus>.

The first string is a 12 character length; The second string could be a string of 12 character minimum to 30 character maximum length.

Example: RFAJVNJKUTKV/4C4D2F243648411C15283533

Here the 2 strings are 12 character length and 24 character length.

The Compact Machine Codes (including MAC ID) can be retrieved in 3 ways:

1. Copy from the “Host Info” tab on the Licensing Settings dialogue of Antenna Magus after installation on the target machine,
2. Download the executable “get-antenna-magus-machine-codes.exe” from <https://www.3ds.com/terms/software-keys> and run this executable on the target machine. It will report the hostname as well as the Compact Machine Codes to the command-prompt window,
3. Copy from the “Host Info” tab on the Settings dialogue of the Antenna Magus Floating License Manager after installation on the target machine (for stand-alone Floating licenses installation).

NOTE: For customers running pre-2019.x versions of Antenna Magus, only Expanded Machine Codes are available when using method 1 and 3 above. These codes will exceed the number-of-character limits of the LKO. For these cases, please encourage users to follow method 2 above to retrieve the Compact Machine Codes.

License key is backward compatible.

For any type of key based on **IdemWorksExt license** key generator, you have to provide a target Id, as:

Format : MAC ADDRESS, one MAC ID must be present: it is the physical mac-address composed of 12 hexadecimal characters [0..9] and [a..f]/

Example MAC: C4F1457BAA34

Information MAC:

- Windows: to obtain the MAC address, run the ipconfig –all command. The mac-address of the machine is identified following the “Physical Address.” line in the “Ethernet adapter Local Area Connection” section. Remove the “-“ from the value

- Linux: to obtain the MAC address run the ifconfig -a command. From the displayed information, find eth0 (this is the default first Ethernet adapter). Locate the number next to the HWaddr. Remove the “:“ from the value.

For RED License key type: in case of a redundant server type, all the MAC addresses of the 3 servers should be provided in incremental order (Primary server: MAC_1, Secondary server: MAC_2, Tertiary server: MAC_3).

License key is backward compatible

For any type of key based on **LM-X technology**, you have to provide a target Id

Format :

12 hexadecimal uppercase characters (MAC Address) for a physical / virtual machine key

Or

10 numerical characters for a dongle key

Example(s):

For Machines : 2EF54C89123A

For Dongle: 208701827

Comment: License key is upwards/backwards compatible

SIMULIA PowerFLOW Suite

For any type of key based on **EXARLMExt** license key generator, you have to provide a target ID, as:

Syntax: please to provide the HostID depending of the Operating System, as:

Windows: Volume Serial Number ; To determine this information: DIR C: (look for "Volume Serial Number is", and remove "-")

Linux: hostID: /sbin/ifconfig eth0 and remove colons from HWaddr

Example:

Windows

3e2e17fd

Linux

00400516E525

Requirements at LKO submission

Hostname must be filled in the dedicated "Hostname" filed. Please refer to the Appendix B

Requestor must specify whether the key will be installed on a physical machine or a virtual machine.

SIMULIA Simpack

For any type of key, you have to provide the Olicense target ID. To obtain this target ID, the OLicense Server must be started. Launch from the OLicense Server Control Application the Open Browser Frontend.

The target ID is the Preferred Server ID, composed of 22 alphanumeric characters, provided by the Olicense Server (Server Administration>Administer Server>Preferred Server ID).

If the Preferred Server ID is unavailable, select Alt. Server ID 2 (Server Administration>Administer Server>Alt. Server ID 2).

SIMULIA Wave6

For any type of key, you have to provide a target Id, as a Mac Address and its hostname.

Windows information:

Format: The target ID is the mac-address composed of 12 hexadecimal characters [0..9] and [a..f] and its hostname, separated by a semi-colon character.

Example: 0015582d80b3;COMPUTER-01

Action: To obtain the target ID, run the ipconfig –all command.

The Host Id or mac-address of the machine is defined following the “Physical Address.” line in the “Ethernet adapter Local Area Connection” section. Remove the “-“ from the value.

The Host Name, is the first information you set after a semi-colon.

SIMULIA Wasp-Net (MiG)

For any type of key, you have to provide a License Key Request File.

In order to provide the License Key Request File, you have to :

1. Download and install WASP-NET software (from software.3ds.com)
2. During installation, a license key request file (MiG_Request.WibuCmRaC) is generated
3. Send this license key request file to your local sales representative/distributor or, as a backup, to SIMULIA.WASP-NET.Support@3ds.com.

SIMULIA XFlow

For any type of key, you have to provide a target Id, as a Mac Address.

The target ID is the MAC Address composed of 12 hexadecimal [0..9] and [A..F]

Windows

Format: The target ID is the mac-address composed of 12 hexadecimal characters [0..9] and [a..f]

Example: 0015582d80b3

Action: To obtain the target ID, run the ipconfig –all command. The mac-address of the machine is defined following the “Physical Address.” line in the “Ethernet adapter Local Area Connection” section. Remove the “-“ from the value.

Appendix B. Determining the Hostname

Windows: Hostname: go to the Control Panel, open "System and Security". On the "System" tab, look for "See the name of this computer".

For other OS, to get Hostname : hostname.

Change Log

Version 1

V1.0: 1/7/2015, initial release.

V1.1: 3/4/2015, reference to CATIA Composer, update to ICEM Surf.

V1.2: 4/17/2015, DSLS Planning, Installation, and Configuration – Notes appendix removed, reference documents are the “DS License Server Installation and Configuration Guide”, the Program Directories and the User’s Guide embedded in the software distribution.

V1.3: 6/5/2015, Helix to CATIA Interface License Keys, DSLS Release Dependency, V1.17 update.

V1.4: 7/3/2015, Q-Checker License Keys, DSLS Release Dependency, V5 R5.3 update.

V1.5: 7/23/2015, 3DEXCITE.

V1.6: 9/11/2015, Q-Checker License Keys, DSLS Release Dependency, V6 R2.2 update.

V1.7: 11/23/2015, SIMULIA Simpack.

V1.8: 4/23/2016, BIOVIA introduction, update on Dymola.

V1.9: 5/9/2016, update on ICEM Surf

V1.10: 5/31/2016, update on Helix V1R18, Q-Checker V5 and V6

V1.11: 6/17/2016, Quintiq introduction, update on Reqtify, Simpack.

V1.12: 9/16/2016, InterCim precision on installation of license server

V1.13: 10/28/2016, update of the BIOVIA Appendix, refresh of the DYMOLA paragraph and Engenuity paragraph

V1.14: 11/25/2016, update of the 3DEXCITE

V1.15: 12/2/2016, introduction of DELMIA Ortems portfolio

V1.16: 4/7/2017, updates for BIOVIA and ICEM Surf

V1.17: 5/2/2017, update for Q-checker V6

V1.18: 6/2/2017, update for Helix V1R19

V1.19: 6/19/2017, update for Q-Checker V5 and Reqtify 2018

V1.20: 7/28/2017, introduction of ENOVIA Impararia, update of SFELic & Quintiq Appendix

V1.21: 10/13/2017, fix on 3DExcite and Impararia Appendix, introduction of XFlow & Vave6

V1.22: 11/3/2017, DSLS as an added licensing system for Ortems 8.2, introduction of ENOVIA EDAT

V1.23: 11/24/2017, introduction of AITAC and DSLS as an added licensing system of XFlow

V1.24: 01/05/2017, introduction of CST

V1.25: February 2nd 2018, new hosted DSLS mode introduced as Managed Licesing Service and fix for Impararia Appendix.

V1.26: March 2nd 2018 , support DSLS Virtualization , introduction of ENOVIA QUMAS, fix on Help message of Impararia

V1.27: April 6th 2018, update of ICEM Surf and update on 3DEXCITE DELTAGEN Marketing Suite products

V1.28: May 18th 2018, update of the MaxReleaseDate information for the Q-Checker for V5 new release

V1.29: June 1st 2018, update of the MaxReleaseDate information for the Q-Checker for V6 new release

V1.30: July 20th 2018, update of the SFE portfolio for DSLS introduction on SFE-2018

V 1.31: October 26th 2018, update of the Ortems portfolio and add a new Appendix paragraph for retrieving Hostname information.

V 1.32: November 28th 2018, introduction of EXA portfolios and update of CST license key generators (AntennaMagus, IdemWorks)

V 1.33: March 12th 2019, Introduction of SIMULIA PowerFLOW Suite portfolio, Modification of the TargetID format of CST-AntennaMagus license key generator

V 1.34: April 19th 2019, Addedum of the SIMULIA PowerFLOW Suite portfolio license key generators in Appendix A and update of the MaxReleaseDate information for the Q-Checker for V5 R5.7

V 1.35: May 10th 2019, EXALEAD V6 Release R2019x, a subset of solutions and products are eligible to DSLS licensing

V 1.36: May 17th 2019, introduction of SIMULIA Opera portfolio

V 1.37: June 7th 2019, update of the MaxReleaseDate information for the Q-Checker for V6 new release, and for the Helix new release.

V 1.38: July 5th 2019, update of the MaxReleaseDate information for the ICEM Surf 2019 release and introduction of the Argosim portfolio

V 1.39: July 22th 2019, introduction of the CATIA Magic and No Magic portfolios

V 1.40: July 26th, 2019, update of the BIOVIA Appendix with the introduction of COSMOlogic products within the BIOVIA Collaborative Science portfolio

V1.41: March 3, 2020, update of 3DEXCITE, introduction of DSLS on release 3DEXCITE DGMKT 2020x

V1.42: March 13, 2020, update of SIMULIA PowerFLOW Suite, decommission of FLEXIm licensing technology with the introduction of PowerFLOW 2020 release

V1.43: June 5, 2020, update of Helix V1R22 (MaxReleaseDate) and Q-Checker for V6 R2.7 (MaxReleaseDate). Addition of MineSched 2020.1.

V1.44: June 16, 2020, addition of Surpac 2020.1.

V1.45: July 3, 2020, update of Q-Checker for V5 R5.8 (MaxReleaseDate) and ICEM Surf 2020 (MaxReleaseDate)

V1.46: August 3, 2020, addition of DELMIAworks EnterpriseIQ

V1.47: October 6, 2020, addition of DELMIAworks Spreadsheet Server licensing within DELMIAworks EnterpriseIQ portfolio

V1.48: November 18, 2020, update of Reqtify – ControlBuild – AUTOSAR, SIMULIA Abaqus, SIMULIA Isight, SIMULIA CST Studio Suite

V1.49: November 26, 2020, update of DYMOLA 2021x

V1.50 – December 4, 2020, update of GEOVIA Surpac 2021 and GEOVIA MineSched 2021

V1.51 – April 6, 2021, update of Q-Checker for V6 R2.8 and SIMULIA PowerFLOW Suite

V1.52 – June 7, 2021, update of Q-Checker for V5 R5.9, SIMULIA Simpact 2020 and Helix V1R23

V1.53 – July 9, 2021, addition of CATIA SCANeR, update of SFE (Managed DSLS)

V1.54 – December 15, 2021, update of GEOVIA MineSched 2022, GEOVIA Surpac 2022 and GEOVIA Whittle 2022

V1.55 – January 26, 2022, update of SIMULIA CST Studio Suite CST S2 2022 (Managed DSLS), CATIA SCANeR 2022 (Managed DSLS)

V1.56 – March 7, 2022, update of Q-Checker for V6 R2.9 (MaxReleaseDate)

V1.57 – May 3, 2022, addition of Iterop, update of Q-Checker for V5 R5.10

V1.58 – July 7, 2022, update of Helix V1R22 (MaxReleaseDate)

V1.59 – November 24, 2022, update of MaxReleaseDate for ICEM Surf 2021 and 2022, update of Reqtify - ControlBuild - AUTOSAR Builder (availability of Managed DSLS for ControlBuild starting 2023x, MaxReleaseDate for 2022x and 2023x).

V1.60 – January 9, 2023, update of MaxReleaseDate for GEOVIA MineSched 2023, GEOVIA Surpac 2023, addition of INSPI Manufacturing.

V1.61 – April 27, 2023, addition of Delmia Augmented Experience.

V1.62 – June 13, 2023, addition of max release date for Helix V1R25.

V1.63 – July 12, 2023, addition of DELMIA Augmented Experience in Appendix A

V1.64 – October 26, 2023, update of CATIA Magic / No Magic (DSLs)

V1.65 – November 7, 2023, update of Reqtify - ControlBuild - AUTOSAR Builder (MaxReleaseDate for 2024x).

V1.66 – December 6, 2023, update of Icem Surf, GEOVIA MineSched and GEOVIA MineSched (MaxReleaseDate for 2024x), Addition of SIMULIA Wasp-Net (MiG)

V1.67 – January 17, 2024, Update of Q-Checker for V6 (Max release date) and SIMULIA X-Flow (Max release date)

IBM and AIX are registered trademarks of International Business Machines Corporation in the United States, other countries, or both.

Microsoft, Windows, and the Windows logo are trademarks of the Microsoft Corporation in the United States, other countries, or both.

Sun, Sun Microsystems, Java and all Java-based trademarks are trademarks or registered trademarks of Sun Microsystems, Inc. in the United States and other countries.

Other company, product, and service names may be trademarks or service marks of others.