

NTT DATA ENGINEERING SERVICES

“Polished in decades by Japanese industries”



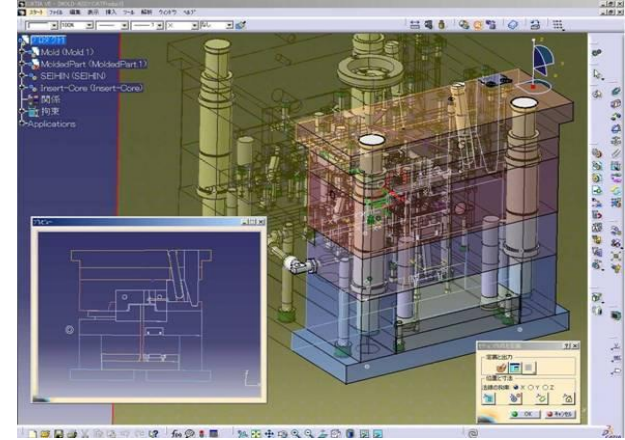
NTT DATA

株式会社 NTTデータ
エンジニアリングシステムズ

CATIA MD2

Coreq Prereq

- ▶ **SpaceE CAA V5 Based Core & Cavity Design** *(Add-on and Standalone)*
Facilitates the detail design of molded parts by providing automation for core and cavity definition
- ▶ **SpaceE CAA V5 Based Mold Design**
Provides dedicated features to design associative mold structures
- ▶ **SpaceE CAA V5 Based CAM** *(Add-on and Standalone)*
Allows NC programming for 3 axis machining operation
- ▶ **SpaceE CAA V5 Based 5Axis** *(Add-on to Space-E CAM)*
For machine tool setting, path creation, post-processing and NC manufacturing verification
- ▶ **SpaceE CAA V5 Based Direct Translator / STEP/ GRADE**
Direct bi-directional data exchange and data translation



Contact:

Junji KANAOKA
+81-3-5711-5341
kanaoka@nttd-es.co.jp

Partner Website:

www.nttd-es.co.jp

[\[Click here for Industry Legend\]](#)



IF WE ask the right questions
we can change the world.