

“Bridging the gap between electronic and mechanical”

Last Update: August 2012

3DS.COM @ Dassault-Systemes | Confidential Information

CATIA EI2 or MD2

Coreq Prereq	ELB EWR EHI
	—

## ▶ Cabling Designer Integration module CAA V5 Based

Bi directional interface Cabling Designer / CATIA V5

- ▶ Enables database sharing and bi-directional communication for design editing
- ▶ Handling variant information
- ▶ Linking with verification and simulations

CATIA DI2

Coreq Prereq	EWR
	—

## ▶ Cabling Designer CAA V5 Based

Integration of Cabling Designer into CATIA V5

- ▶ Wire harness systems of vehicles hierarchical management
- ▶ Electrical harness diagram on CATIA V5

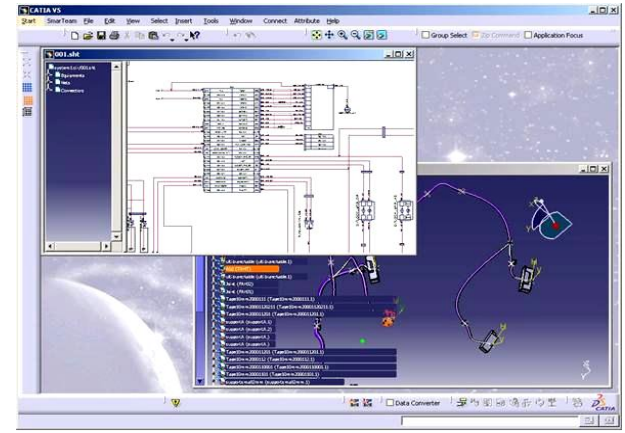
CATIA MD2

Coreq Prereq	CBD
	—

## ▶ Board Interchanger for CATIA V5

Link between “Electrical PCB design” and “Mechanical Chassis design”

- ▶ Verifies clearances in a true 3D environment
- ▶ Provides easy 3D PCB modeling with accuracy



**Contact:**

**Mamoru HIRAYAMA**  
 +81 (0) 45 942 1511  
[m-hirayama@zuken.co.jp](mailto:m-hirayama@zuken.co.jp)

**Partner Website:**

[www.zuken.co.jp](http://www.zuken.co.jp)

[\[Click here for Industry Legend\]](#)

