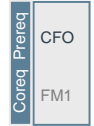


# GEOMETRIC (1/3)



## “InterOp Maximized”

CATIA MD2



### ► GeomCaliper on CATIA V5

Fast, accurate and easy to use measurement tool

- Localization of critical thickness areas from a strength, manufacturing, weight reduction or material flow standpoint

ENOVIA DER



### ► V5- xPDM Gateway

Process-driven exchange of design and engineering data between ENOVIA V5 VPM and Teamcenter

- Asynchronous integration with minimal user intervention
- Minimum deployment time & lower deployment cost

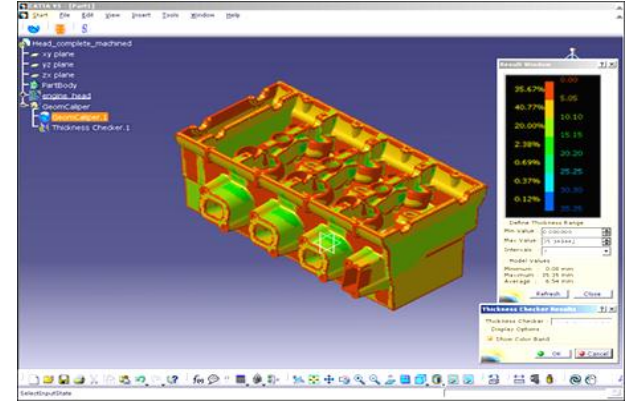
Any DELMI Config



### ► Manufacturing Hub Adapter

Collaborating between Design and Manufacturing domains

- Eliminating costly downstream issues early in lifecycle
- Manufacturing users gain access to latest configuration data and context



#### Contact:

Sreekanth JAYANTI  
+91 20 4028 4974  
[sreekanth.jayanti@geometricglobal.com](mailto:sreekanth.jayanti@geometricglobal.com)

#### Partner Website:

[www.geometricglobal.com](http://www.geometricglobal.com)

[\[Click here for Industry Legend\]](#)



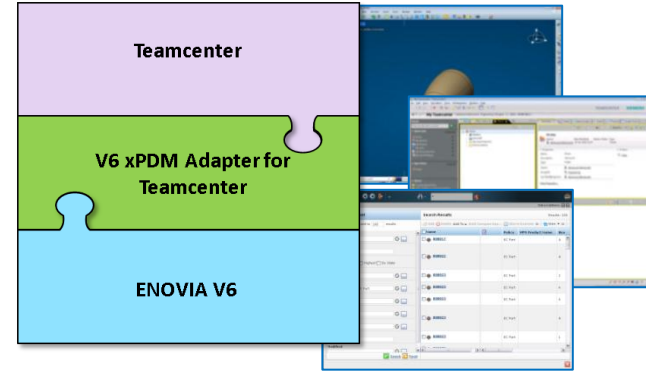


## “InterOp Maximized”

### V6 xPDM Adapter for Teamcenter

Engineering and design data exchange between ENOVIA V6 and Teamcenter

- ▶ Enable design and engineering processes spanning ENOVIA V6 and Teamcenter
- ▶ Facilitate upgrade of CATIAV5 to CATIAV6 for users currently using CATIAV5+Teamcenter for product design
- ▶ Enable coexistence of Teamcenter and V6 platform based applications in an enterprise



#### Contact:

Sreekanth JAYANTI  
+91 20 4028 4974  
[sreekanth.jayanti@geometricglobal.com](mailto:sreekanth.jayanti@geometricglobal.com)

#### Partner Website:

[www.geometricglobal.com](http://www.geometricglobal.com)

[\[Click here for Industry Legend\]](#)



Coreq	CPF
	LIV
Prereq	VPM
	MDE
	ENG
Coreq	DEC
	PRG
	RMT



## “From inception to conclusion”

### ► eDrawings for CATIA V5 (*Adopter Product*)

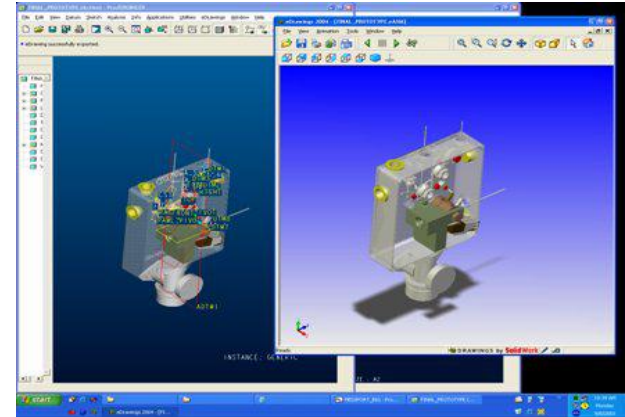
First email-enabled collaboration tool designed to ease the sharing & interpretation of 2D/3D product design data

- Unlimited users can easily markup and provide feedback at no cost
- Secure collaboration
- Compact file size facilitates email exchange
- eDrawings in executable format eliminates the need to even install the viewer

### ► GeomCaliper on CATIA V5 (*Adopter Product*)

Locate thin and thick sections in model (*Thickness Analyzer launch button*)

- Locate critical thickness areas through intuitive visualization (from a strength, manufacturing, weight reduction or material flow standpoint)
- Generate detailed reports
- Two analysis methods (*Normal Ray & Rolling Sphere*)



#### Contact:

Vinay KULKARNI  
+91 22 6705 6093  
[vinay.kulkarni@geometricglobal.com](mailto:vinay.kulkarni@geometricglobal.com)

#### Partner Website:

[www.geometricglobal.com](http://www.geometricglobal.com)

[\[Click here for Industry Legend\]](#)



CATIA MD1



CATIA MD2

