

SIMULIA V6R2010 – FACT SHEET

Scalable realistic simulation solutions



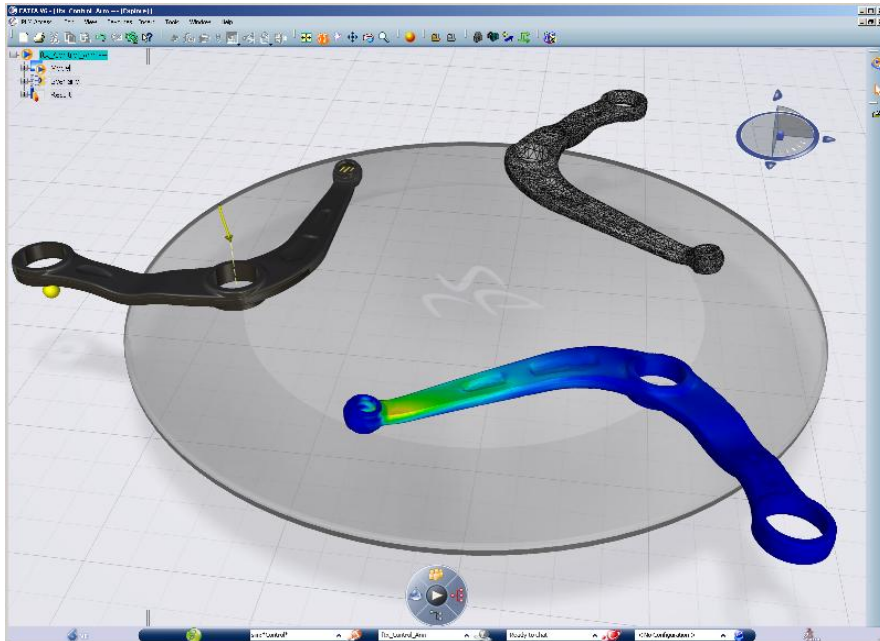
- **SIMULIA VALUE AT A GLANCE**
- **SIMULIA V6R2010 ENHANCEMENTS QUICK VIEW**
- **SIMULIA OVERVIEW**
- **SIMULIA DOMAINS & V6R2010 ENHANCEMENTS**



SIMULIA VALUE AT A GLANCE

SIMULIA enables collaboration on performing virtual tests and complying with performance specifications. Its portfolio provides powerful tools that enable designers and engineering analysts to perform fast, accurate performance studies on parts, components, and products designed with CATIA.

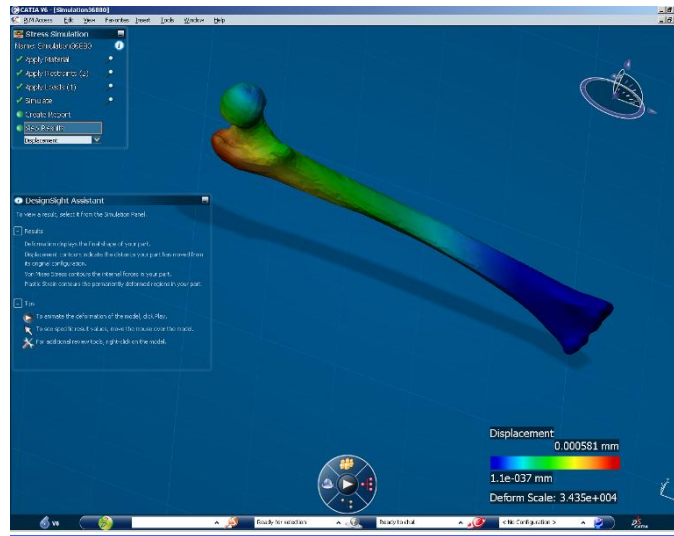
- Realistic Simulation is an essential part of the V6 strategy.
- Making simulation an integral business process is a key goal of SIMULIA V6.
- SIMULIA provides solutions to evaluate realistic product performance during the design process.
- V6 Simulation enables designers and engineers to collaborate on complying with performance metrics.
- Leverages the V6 platform to manage and secure Simulation IP.



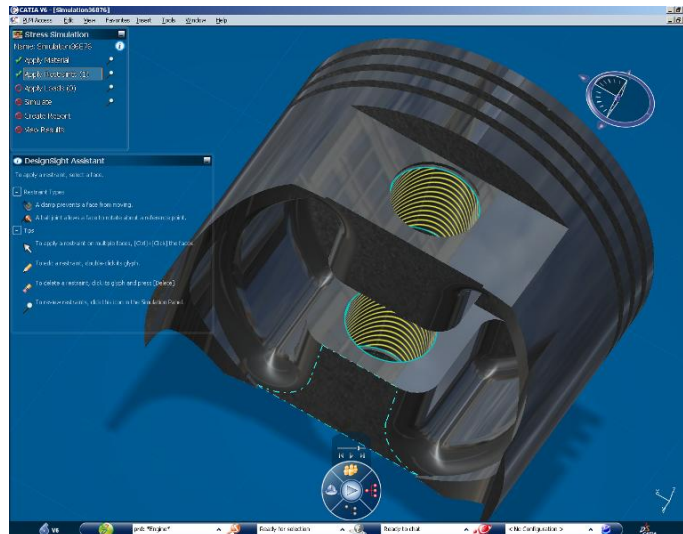
Simulation Navigator provides specific PLM capabilities that allows you to review and manage realistic simulations

SIMULIA V6R2010 ENHANCEMENTS QUICK VIEW

- Compliance product family introduced with the release of DesignSight Structure (DSR)



Using DesignSight Structure (DSR), the designer can study the reaction of parts subjected to a load and visualize the resulting displacement as illustrated by this complex human bone model.



DesignSight provides unique, embedded help tools that guide users through the steps to define a simulation.

The Stress Simulation panel and the DesignSight Assistant are always available to ensure that the necessary tasks are clear.



SIMULIA OVERVIEW

The SIMULIA portfolio is organized by domains according to business process. The SIMULIA domains are Compliance, Multiphysics Digital Lab, Open Scientific Platform, and iPLM Collaborative Innovation:

Compliance

The solutions in the Compliance domain enable design engineers to perform virtual tests and explore real-world product behavior to ensure compliancy with performance targets such as safety, strength, durability, reliability, and manufacturability:

- The new SIMULIA product suite, DesignSight, enables designers with minimal simulation knowledge to assess compliance with performance specifications and manufacturability requirements.

Multiphysics Digital Lab

The Multiphysics Digital Lab domain leverages state-of-the-art simulation technology. It supports the industry's extreme diversity of multiphysics simulation requirements, which dramatically reduce the need for physical testing.

Open Scientific Platform

The Open Scientific Platform domain is the foundation for the development of Dassault Systèmes' lifelike simulation ecosystem. It provides an open architecture that supports partner applications.

iPLM Collaborative Innovation

The iPLM Collaborative Innovation domain is a collaborative environment to capture, manage, reuse, automate, and make decisions on cross functional simulation and scientific data, processes, and IP over their entire lifecycle.



SIMULIA DOMAINS & V6R2010 ENHANCEMENTS

COMPLIANCE



Overview

The SIMULIA Compliance domain contains the DesignSight product suite and industry-focused product suites. The DesignSight suite enables product designers with minimal simulation knowledge to assess compliance with performance specifications and manufacturability requirements. An intuitive user interface and robust analysis capabilities provide feedback on product performance.

This scalable product line allows product designers to pass models to simulation specialists using more advanced FEA tools from SIMULIA for more detailed study, and to re-use simulation templates developed by subject matter experts.

Description

V6R2010 introduces the DesignSight product suite. These products are targeted at designers responsible for shape, size, and material selection decisions who seek fast and accurate feedback on product performance or manufacturability.

The DesignSight product suite will continue to evolve to incorporate new capabilities in every release, starting with the introduction of DSR in V6R2010. Future DesignSight products will expand analysis capabilities to include the structural analysis of assemblies, thermal analysis of parts and assemblies, as well as the simulation of motion, fatigue, molding, forming, and lighting.

Release Enhancements

N/A (new release of DesignSight Structure)