

Semiconductor Accelerator™

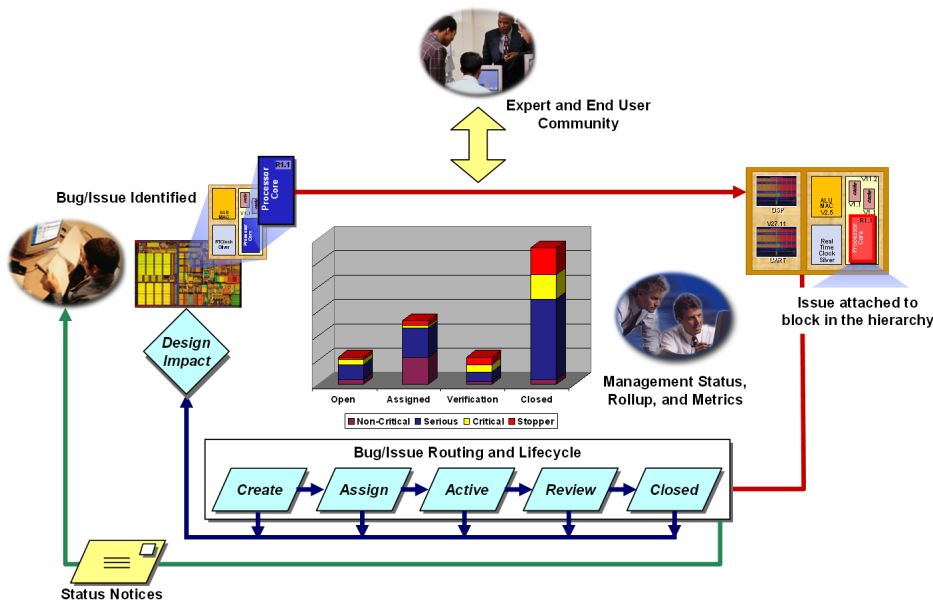
For Team Collaboration

Chip development today is based on shorter lifecycles, more competitive environments, and less forgiving technology than ever before. Product complexity and density continue to increase while average sales prices and margins continue to shrink. Problems that increase the length or number of design cycles or mistakes that cause additional re-spins of a die can make the difference between profit and loss for a new product or even result in project cancellation. Consider these facts from a recent industry study:

- Only 45% of new product launches meet their original launch date
- More than 60% of all semiconductor designs require at least one re-spin
- Only 59% of semiconductor designs make it into production
- Over 40% of development projects exceed the planned budget
- Less than 60% of semiconductor projects hit their product cost targets
- 83% of issues identified during validation are design-related

Source: Kalypso Partners LLC, Semiconductor research 2006.

Companies looking to be better than these industry norms and positively impact design cycle time need well-managed team collaboration, issue management, structured data sharing and tools to allow them to rapidly react to issues. Key to this is the ability to relate and track issues directly to design data as well as any other relevant product content throughout the enterprise. All teams, not just engineering, must be able to get rapidly involved because well documented design decisions are essential in today's business environment where auditability is mandatory.



The MatrixOne Semiconductor Accelerator for Team Collaboration provides capabilities to address a number of key business challenges specific to the Semiconductor industry, which needs to implement well-managed team collaboration, issue management, and structured data sharing. Companies who deploy this solution gain:

- Competitive advantage through accelerated development and shortened time-to-market
- Decreased development costs through reduced design cycles and formalized best practices
- Improved collaboration by enabling team members across the enterprise to find and add their own data to overall product knowledge

Industry Accelerator



Is the MatrixOne Semiconductor Accelerator for Team Collaboration what you need?

- Do projects lack the ability to tie issues directly to Semiconductor design data causing larger development schedule and costs than is necessary?
- When design changes are made, is updating issue status a manual and frequently delinquent process that results in the inability to make informed management decisions due to out-of-date information?
- Do key design discussions take place in email or other unmanaged media leading to delays or technical problems introduced from lost communications?
- Is traceability to design and project decisions lost because discussions driving those decisions are not preserved in a searchable, auditable system?
- Is effort and time wasted because of the inability to capture non-engineering inputs in issue discussions?
- Does the lack of connection to business data found outside of the engineering systems result in project interruptions and lost justifications?
- Does the inability to automatically route and manage issues for assignment and approval create project delays and mistaken decisions?
- Does lack of control of access to design issues and data place the organization at financial or strategic risk?
- Does the inability to standardize issue management processes prevent the organization from learning from experience and driving continuous improvement?

The ENOVIA MatrixOne Answer

The MatrixOne Semiconductor Accelerator for Team Collaboration is a web-based Issue Management and Collaboration solution that offers a secure, structured, virtual workplace that enables managed and ad-hoc collaboration for cross-functional and geographically dispersed teams. Members can collaborate on design data—including that managed by MatrixOne Synchronicity's DesignSync® Design Data Management (DDM) solution—documents and other product content through discussions, notifications, alerts and review/approval processes.

The Semiconductor Accelerator for Team Collaboration is based on MatrixOne's PLM Platform, MatrixOne's Business Process Applications, and MatrixOne Synchronicity's DesignSync® DDM solution:

- The Matrix PLM Platform, a proven, standards-based offering built to support global, enterprise-wide deployments and equipped with the industry's highest level of performance and scalability, making it an ideal platform to support the product development process in any enterprise.
- ENOVIA MatrixOne Business Process Applications, which incorporate the best practices of some of the world's most innovative companies. These applications allow companies to drastically improve the way they collaborate with internal and external teams, develop products and work with suppliers and partners. ENOVIA MatrixOne's Business Process Applications are being used across all industries to allow companies to keep geographically dispersed teams connected through access to real-time data and business processes.
- MatrixOne's Synchronicity DesignSync, the industry standard for Semiconductor Design Data Management that provides the underlying vault for both product designs and reusable IP.



Efficient and Effective Collaboration and Issue Management with MatrixOne Semiconductor Accelerator for Team Collaboration

- Raise and manage issues against data vaulted in DesignSync or other business objects in the Matrix PLM Platform
- Control issue lifecycles using configurable routes and approval states
- Understand the state of the design at a glance by viewing status, tags, comments, and content of DesignSync data or checking in/out as necessary
- Automatically capture issue history and changes
- Collaborate in a managed, auditable system
- Track design decisions through on-line discussions in order to solve problems and capture team knowledge including information and input from both engineering and non-engineering teams
- Easily search for and relate engineering and non-engineering data
- Track issue workloads and trends using configurable graphical metrics-based reports
- Easily create secure collaborative WorkSpaces and assign access rights to team members
- Involve suppliers and partners in the project team early and throughout the product development process

Features and Capabilities

Manage and Track Issues Easily raise issues against design data or any other object in the enterprise system. Direct issues through configurable routes and track them to company or project specific lifecycles.

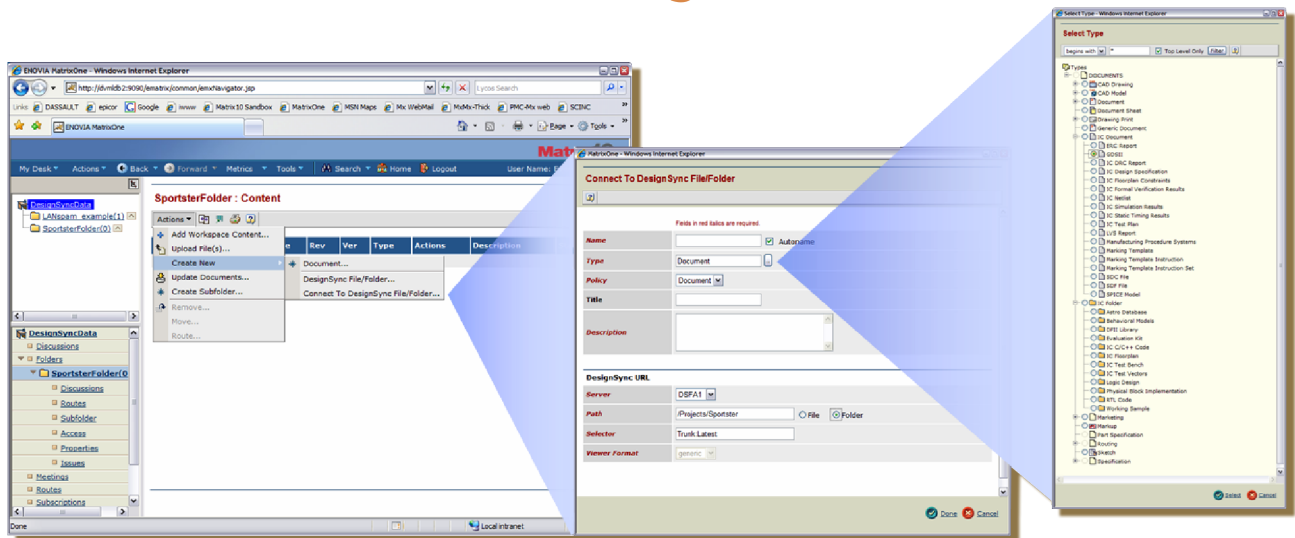
DesignSync File Access Relate issues directly to data managed in DesignSync. Browse the DesignSync data directory hierarchy, view the content, and checkout/in as required. A centralized enterprise-wide system can work with multiple project-level DesignSync servers across the organization or multiple project-level systems may be set up alongside each DesignSync server.

Assemble Virtual Teams Add team members, assign roles and responsibilities and provide default access online to quickly and easily assemble cross-functional teams in virtual workspaces.

Management Reports Rapidly generate summaries and roll ups, generate configurable, graphical, metrics-based reports, or easily create sophisticated customized reports with optional 3rd party add-ons such as Crystal Reports™. Visually analyze data by generating a variety of graphical charts or numerical tables.

Create Discussion Threads Create multi-threaded discussions in order to share ideas and reference documents. Subscribe and automatically receive ongoing communication to keep abreast of developments and final decisions. Easily sort discussions by workspace, folder or content, or search them to find exactly the information required to answer the question at hand.

The New Standard for Team Collaboration and Issue Management



- **Manage and Track Issues as they Occur**
- **Access DesignSync Files**
- **Assemble and Manage Virtual Teams**
- **Generate Detailed Management Reports**
- **Create Multi-Threaded Discussions**
- **Implement your Company's Best Practices**
- **Capture Dialog and Decision History**
- **Collaboration Across Disparate Teams**
- **Subscribe to Automatic Notifications**
- **Assign Specified Secure Access**

Implement Company Best Practices Institutionalize the company's best practices by creating routing templates that control routing paths, approval lists and actions using delegation rules, task escalation rule and additional route logic. Implement checks that enable the automation and enforcement of standard practices across the entire enterprise.

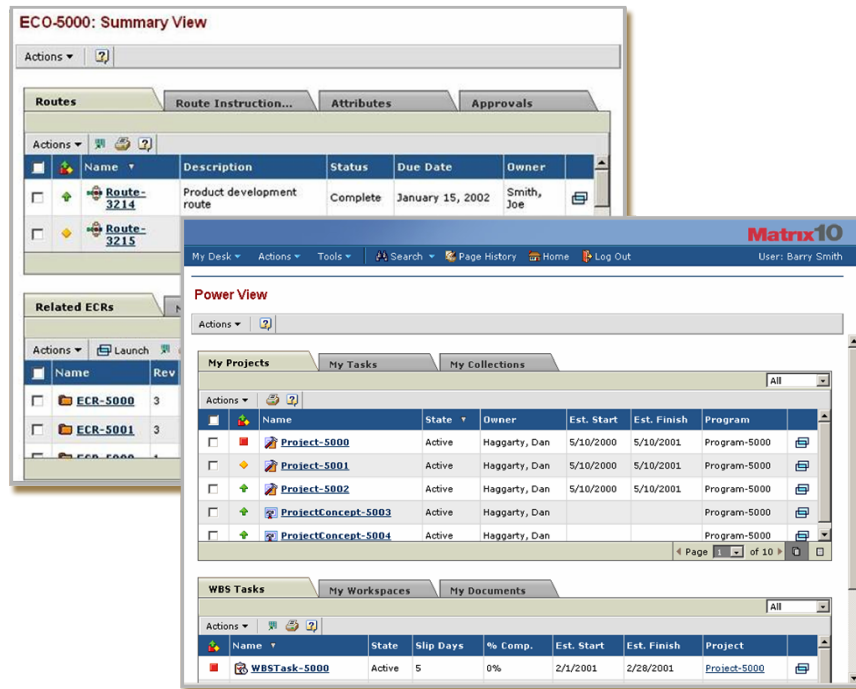
Decision/History Capture Automatically capture the dialog that solved tough designs and discussions in order to retain team knowledge. All information is kept in a managed, easy to search and auditable system.

Cross Team Collaboration Teams beyond engineering can easily add their own content to the overall product knowledge. This provides the ability to classify the non-engineering data in the same classification system alongside the engineering data, or in its own libraries using a bookshelf and document organization.

Automatic Notifications Enable users to subscribe to standard notifications, content owners to send push notifications and administrators to customize system notifications by company.

Secure Access Allow workspace leads to set default access definition for the workspace, including folders and sub-folders. Assign granular access for specific content. Administrators can assign company specific vaults and file stores.

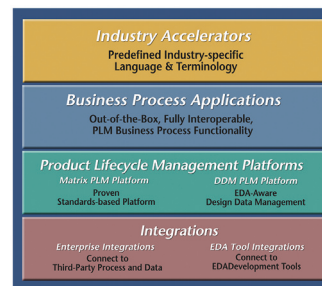
MatrixOne Accelerator for Team Collaboration



To learn more about how your company can benefit from ENOVIA MatrixOne PLM solutions, call us today at 978 589 4000, or visit MatrixOne.com

The ENOVIA MatrixOne PLM Environment

Being the industry's most robust and flexible PLM environment, ENOVIA MatrixOne provides organizations with a single, secure environment that eliminates the barriers caused by geographically dispersed organizations and value chains, multiple disparate systems and increasing security requirements.



About ENOVIA MatrixOne

MatrixOne, Inc. was acquired by Paris-based Dassault Systèmes in May, 2006 and today is part of its ENOVIA PLM Collaborative Environment family of solutions. The ENOVIA MatrixOne solutions enable companies to accelerate product innovation to achieve top line revenue growth and improve bottom line profitability. ENOVIA MatrixOne is focused on helping companies across the automotive, aerospace & defense, consumer, machinery, medical device, semiconductor and high-tech industries solve their most challenging new product development and introduction problems. More than 850 companies use ENOVIA MatrixOne solutions to drive business value and gain a competitive advantage, including industry leaders such as BAE Systems, Bosch, Comau, General Electric, Honda, Johnson Controls, Linde AG, NCR, New Balance, Nokia, Philips, Porsche, Procter & Gamble, REI, Sony Ericsson, STMicroelectronics and Toshiba. ENOVIA MatrixOne (www.MatrixOne.com) is headquartered in Westford, Massachusetts, with locations throughout North America, Europe and Asia-Pacific.



210 Littleton Road, Westford, Massachusetts 01886 978 589 4000 MatrixOne.com 3DS.com

© Dassault Systèmes 2005, 2007.

All other trademarks and service marks are the property of their respective owners.