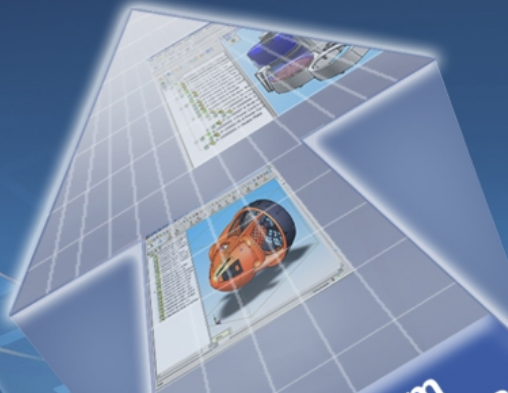
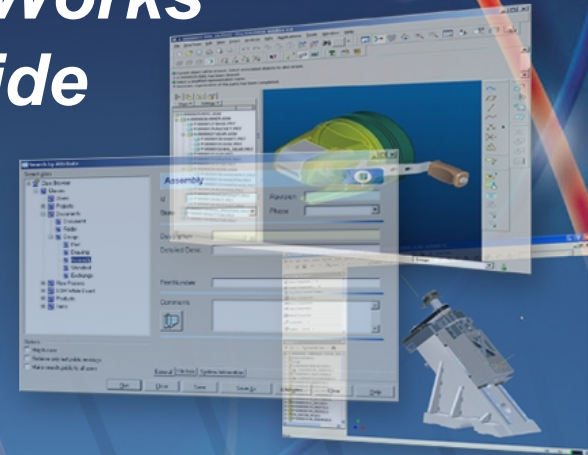


# Excerpt from SmarTeam Design Express for Multi-CAD: SolidWorks Methodology Guide



**SmarTeam  
Design Express**

.sldasm	.idw	.prt.1	.dft	.ipn	.drw.1		
.iam	.par	.sldprt	.dwg	.asm.1	.psm		
.ipt	.asm	.slddrw	.pwd	.sldasm	.idw	.par	
	.pdf	.tif		.slddrw	.doc	.psm	
	.par	.sldprt		.dwg	.pdf	.dft	.ipn
.iam	.idw	.drw.1		.prt.1	.asm.1	.slddrw	.ipt
						.doc	.pwd

# SolidWorks Assembly

Assembly

Id: A-00000013-000    Revision: A


State: Released    Phase: Preliminary Design

Description: GEAR SHAFT ASSY

Detailed Desc.:

Configuration: 25-10 set - 32mm offset

Part Number:

Comments:  Search And Link button

SDE

The following mappings are defined between SmarTeam and the Specific Configuration properties of SolidWorks

## SmarTeam

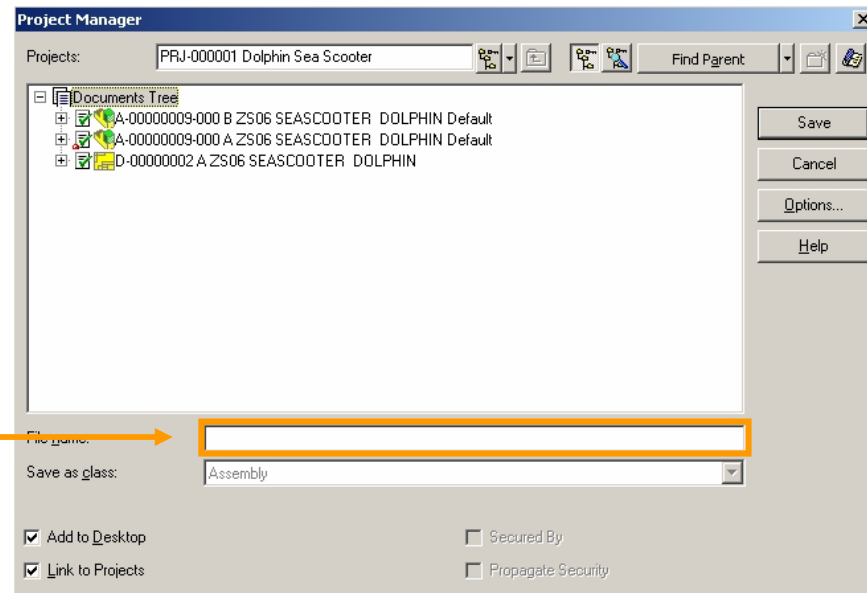
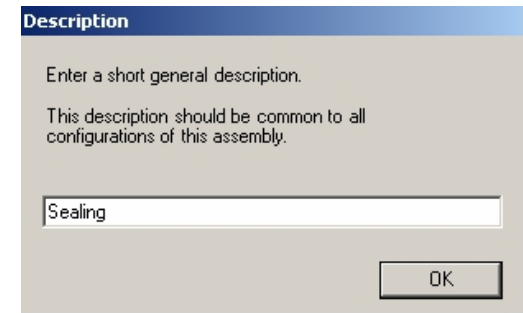
Id	TDM_ID
Configuration	TDM_COMPONENT_NAME
Description	TDM_DESCRIPTION
Detail Description	TDMX_DETAILED_DESCRIPTION
Comments	CN_COMMENTS
Part Number	TDMX_RELATED_PART_ID

## SolidWorks

→	ID
→	Specific Configuration
→	Description
→	Description
→	Not mapped
→	Part Number

## Unique identifiers for Assembly and Parts

- Create a part or assembly in SolidWorks.
- In the Description window, enter a short generic description
- Save the Part in SmarTeam
- Keep the File Name field empty to have the file name assigned automatically based on the SmarTeam ID and description



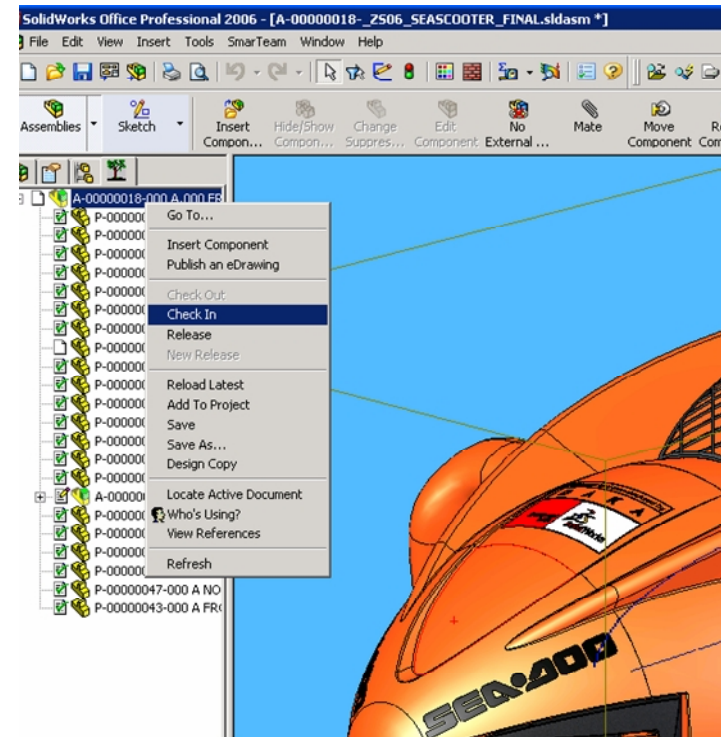
Keep empty

# The six commandments for a designer in SolidWorks

## - Commandment 2

- Lifecycle operations such as Check In/Check Out must always be run using the SmarTeam menu in SolidWorks

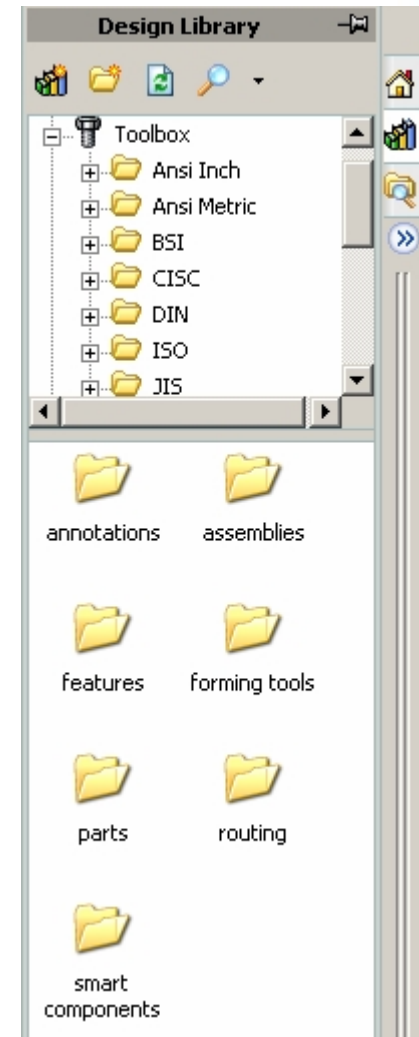
- ✚ To help the designer to follow this rule, the SmarTeam menu is already minimized. As there may still be situations in which these capabilities are available, it is important that the designer follows this rule exactly.
- ✚ In the SmarTeam menu in SolidWorks the designer will find the lifecycle operations.
- ✚ In the tree menu within SmarTeam, these operations are not available for SolidWorks documents.



# SolidWorks Assembly

## Insert Toolbox Part

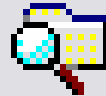
- We use the SolidWorks Toolbox to **insert standard parts** or to access the files stored in the shared directory
- Use Design Library, Toolbox to browse and insert the Toolbox part
- When you use the part for the first time, it will be automatically released and then used in the assembly
  - ✎ **Enter a part number when you use a Toolbox part for the first time**
- The inserted part is recognized by SmarTeam as a standard part so it keeps its reference. As it is a standard part, it does not use a new revision during a lifecycle operation from the assembly.



# Searching for a document



icon in SolidWorks



in SmarTeam

In the bottom left of the window, you will see three options:

Options

- Match case
- Retrieve only last public revisions
- Make search public to all users

Search Editor

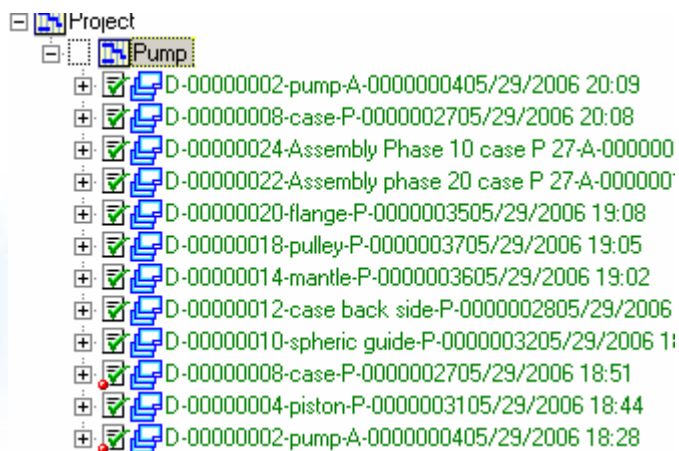
Select a search

	Ownership	Name
7	Public	Documents
8	Private	My documents

- Option 1** – Match Case: Specifies whether or not your search is case-sensitive.
- Option 2** – Retrieve only last public revisions: If checked, only the latest revision of the file is displayed. If unchecked, all the revisions of the file are displayed.
- Option 3** – Make search public to all users: Available for administrator use only, makes searches available for all users (public).

# Search by example

- This tool allows you to perform searches that involve two classes. For example, SolidWorks documents related to a certain project. You can also use Search by example to obtain sorted output or a specific search on a date range.



Participating Classes

(1st) Project

- Class
- Id
- State
- Creation Date
- Created by:
- Modified by:
- Last modification date and time
- Description
- Template Project
- Restricted

(link) Documents Projects Relati

- Class
- State
- Creation Date
- Created by:
- Modified by:
- Last modification date and time
- Description

(2nd) CATIA

- Class
- Revision
- State
- Creation Date
- Created by:
- Modified by:
- Last modification date and ti
- Description
- Phase
- Previous Revision
- Approval Date
- Effective From
- Effective Until

Field:	Description	CAD Identifier	Creation Date
From class:	1st	2nd	2nd
Sort:			
Show:	✓	✓	✓
Unique:			
Condition:	"pump"		> "02/12/2005 00:00"
Or:			
Or:			
Or:			
Or:			
Or:			
Or:			
Or:			

