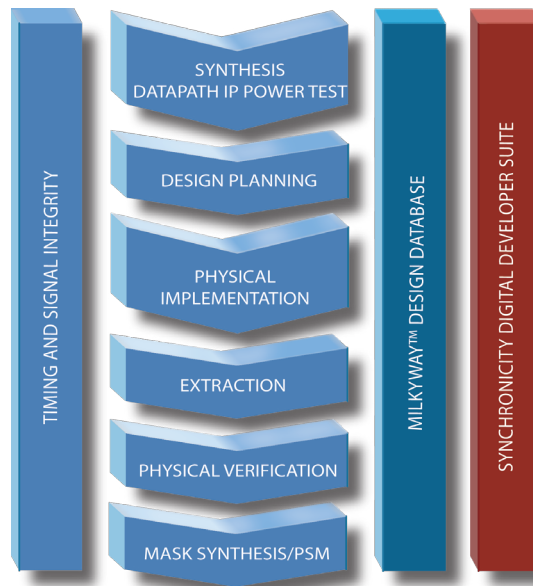


## **ENOVIA Synchronicity** **DesignSync® MW™**

Not too long ago, a significant digital design could be created by a relatively small team. Now however, teams are larger and often distributed across multiple sites, time zones and companies. To add to these complexities, as the industry moves to nanometer features and gigahertz clocks, physical design iterations need to be executed more often and earlier in the design flow. The ad-hoc, shareware tools that used to suffice for small teams dealing with only a few limited text files can no longer manage all the data and interactions of a larger full flow team.

As the complexity has grown, so has the need for collaboration and management across the entire development process. Moreover, complex data, like that of Synopsys Milkyway, does directly map from design units to files, which greatly adds to the challenge of version control and design data management. ENOVIA provides a solution with DesignSync MW, which supports the Synopsys Galaxy design flow by adding both Milkyway database recognition and processing capability, as well as an integration into the Synopsys Galaxy tool set.

With DesignSync MW, users can directly manage and collaborate with Milkyway data used by such Synopsys tools as Astro™ and JupiterXT™. DesignSync MW understands the specific data structure of the Synopsys design tools and the behaviors required to reliably and efficiently manage them in a team environment. It enables the team to collaborate at the design unit level, rather than exchanging copies of the whole library, as is common without this formal interface.



DesignSync MW can manage the immense amount of information generated from large design teams with hundreds of users. It has special features, such as data caches and mirrors to maintain performance across multiple sites, while ensuring enterprise security with fine grain access controls, SSL encryption and LDAP authentication. Detailed information on the base platform is included in the DesignSync datasheet.

*ENOVIA's DesignSync Milkyway raises engineering productivity by providing secure, multi-site design collaboration and management across the full Synopsys Galaxy design platform.*

## Features & Capabilities

### Span Synopsys Galaxy Implementation Platform

With the Milkyway database under design management in DesignSync MW, you are able to leverage the efforts of multiple designers contributing to one Milkyway database. Only DesignSync MW provides the capability for sharing design units with a Milkyway database among multiple designers performing tasks in individual workspaces.

### Efficient Disk Space Usage

Because DesignSync MW provides the capability to collaborate with a Milkyway database, it is not necessary to make copies of databases for any user who wishes to contribute changes.

### Manage Contributions from Many Parties

Because a Milkyway database is binary, it's not possible to combine (merge) the contributions of multiple designers made in different copies of the database. DesignSync MW eliminates this problem by allowing a single database to be shared.

### Safety Net for Milkyway Design Data

Every engineer has stories of bad files overwriting good, and of the taped-out configuration being lost during the test run. DesignSync MW allows users to take snapshots of known good configurations to safeguard against such occurrences.

### A Strong Foundation

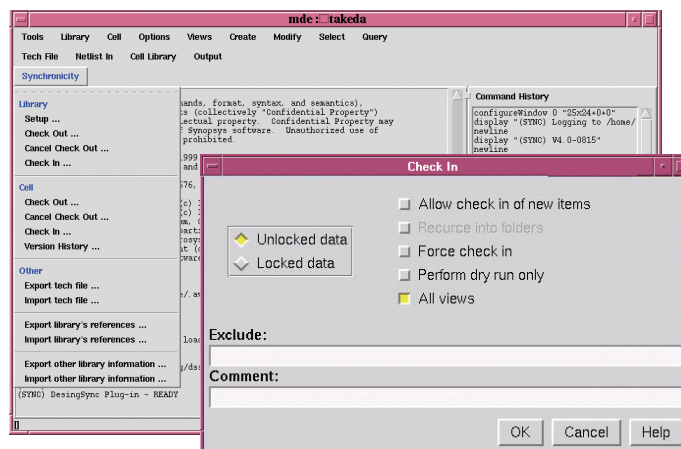
With over 25,000 copies in use at over 120 of the world's top semiconductor design companies, DesignSync MW is an extension of the industry tested and broadly deployed DesignSync.

### Choose How You Work

Users can drive their data through the Synopsys user interface, the DesignSync GUI, or the command line. This flexibility supports many different use models.

### Supported Platforms

DesignSync MW is available on popular versions of Solaris, HP-UX and Linux, and is widely compatible with Synopsys tools that use recent versions of the Milkyway Database.



*DesignSync MW has been integrated into the user interfaces of key Synopsys Galaxy tools like Astro.*

For additional information, contact us at:  
Dassault Systèmes ENOVIA Corp.  
900 Chelmsford Street, Lowell, Massachusetts 01851  
978 442 2500 • ENOVIA.com • 3DS.com

