

CONVERT

ENOVIA Format Converter for Pro/ENGINEER



ENOVIA® Format Converter for Pro/ENGINEER enables V6 users to reuse or migrate Pro/ENGINEER application data in ENOVIA® VPM Central™. Users can import Pro/ENGINEER exact geometry as tessellated V6 representation and leverage it in downstream V6 processes, such as design review, digital mockup review, design in context, and manufacturing. Users can also migrate Pro/ENGINEER exact geometry into a V6 exact geometry representation thus pursuing fully a design with V6 authoring applications.

Key Benefits

- Enables V6 users to collaborate on Pro/ENGINEER® and Creo applications format.
- Import the Pro/ENGINEER and Creo file contents in V6.
- Enables customers to migrate from Pro/ENGINEER® Creo to V6.

Product Overview

The file system includes engineering semantics for part and product definitions described in Pro/ENGINEER files format.

The V6 VPM command “PLM access import from file” enables users to select a Pro/ENGINEER root assembly file to be imported to ENOVIA and transformed into a V6 representation. ENOVIA will query the converter in order from the root file to compute the links and import to ENOVIA all related files.

Receiving these Pro/ENGINEER files, ENOVIA will synchronously or asynchronously launch the format converter for Pro/ENGINEER in order to compute a V6 representation of these Pro/ENGINEER files.

The conversion from Pro/ENGINEER to a V6 representation will be “as new.” The V6 representation will be stored in ENOVIA as the new master data of the part and product. No link is kept with the original Pro/ENGINEER file and there are no lifecycle capabilities.

The ENOVIA Format Converter for Pro/ENGINEER will:

- Explore the document links from a root Pro/ENGINEER file.
- Convert the Pro/ENGINEER product structure information (instance, references, position) into V6
- Convert the Pro/ENGINEER exact geometry representations into V6 exact geometry representation.
- Under option, convert the Pro/ENGINEER exact geometry representations into a V6 tessellated geometry representation.

Input: Pro/ENGINEER files (File extension .asm & .prt)

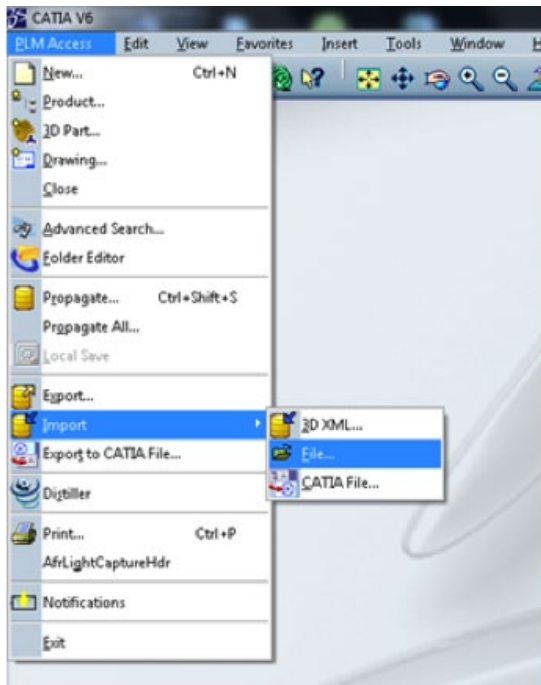
- Per Part: One Pro/ENGINEER file describing an assembly with external reference to Pro/ENGINEER part files
- Fully shattered Pro/ENGINEER files: one Pro/ENGINEER file per assembly component and one Pro/ENGINEER file per part.

The contents is imported as new references in ENOVIA V6

The Role of ENOVIA V6 and PLM 2.0

ENOVIA Format Converter for Pro/ENGINEER supports PLM 2.0, product lifecycle management online for everyone, and the ENOVIA V6 values, which are:

- Global collaborative innovation
- Single PLM platform for intellectual property (IP) management
- Online creation and collaboration
- Ready to use PLM business processes
- Lower cost of ownership



PLM Access Import from File command allows Specialized Dataexchange teams or individual users to import ProE contents to V6



Delivering Best-in-Class Products



Virtual Product



Information Intelligence



3D Design



Virtual Planet



Realistic Simulation



Dashboard Intelligence



Digital Manufacturing



Social Innovation



Collaborative Innovation



3D Communication

Dassault Systèmes, the **3DEXPERIENCE** Company, provides business and people with virtual universes to imagine sustainable innovations. Its world-leading solutions transform the way products are designed, produced, and supported. Dassault Systèmes' collaborative solutions foster social innovation, expanding possibilities for the virtual world to improve the real world. The group brings value to over 150,000 customers of all sizes, in all industries, in more than 80 countries. For more information, visit www.3ds.com.

Europe/Middle East/Africa

Dassault Systèmes
10, rue Marcel Dassault
CS 40501
78946 Vélizy-Villacoublay Cedex
France

Asia-Pacific

Dassault Systèmes
Pier City Shibaura Bldg 10F
3-18-1 Kaigan, Minato-Ku
Tokyo 108-002
Japan

Americas

Dassault Systèmes
175 Wyman Street
Waltham, Massachusetts
02451-1223
USA

Visit us at
3DS.COM/ENOVIA

