



ENOVIA Live Similarity

Product Objective

ENOVIA® Live Similarity™ saves users time and effort by integrating a shape-based search of CATIA® V6® data through the contextual menu of the 3D navigation available in ENOVIA® 3DLive™. A shape-based search is an intuitive process that enables easy and quick information reuse through the product lifecycle stages such as design, planning, manufacturing, procurement, and inventory management.

Product Overview

ENOVIA Live Similarity reduces duplicated references in a database as designers can access and check existing data directly on their designs before deciding to create new designs. Innovation quickens as designers share their work in a realistic 3D environment populated by accurate, real-time data.

The shape-based search technology enhances the 3D environment available via ENOVIA 3DLive. For example, today changing a component in a design is a very complex process that requires knowing the specificities of the part, the part number, and the family of parts. With ENOVIA Live Similarity, designers interested in changing a component, can work in ENOVIA 3DLive, click on a button, view an easy to understand menu, and instantaneously have a list of choices for parts. Search and tracing functions of similar 3D parts is quicker, enabling a rapid product deployment.

Using ENOVIA Live Similarity, designers access the shape for information, no longer needing to know the name of the part. While working in ENOVIA 3DLive, designers work seamlessly and fluidly by accessing drop down menus available through simple key strokes. ENOVIA Live Similarity eliminates the need for search libraries, reducing overall product development time and costs. Other stakeholders, such as Purchasing and Sourcing, can use ENOVIA Live Similarity to their advantage too.

With a few, simple key strokes, users can search for specific data using designs of interest and:

- Access real-time information on part substitutions
- Navigate in the Graphical User Interface (GUI) available in ENOVIA 3DLive and identify similar shapes easily
- Instantly retrieve parts information and view appropriate available components in 3D thumbnails, with names and ranking information

Product Highlights

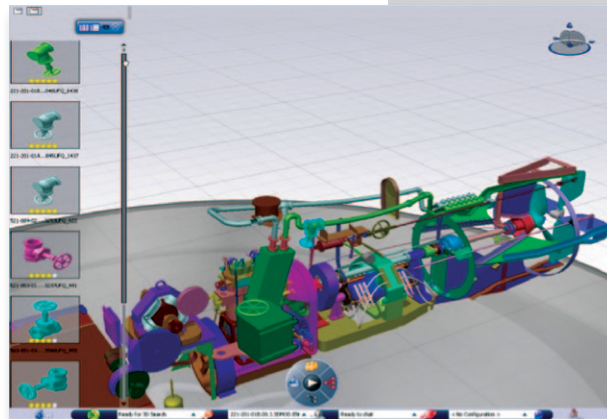
Shaped-Based Data Indexing

ENOVIA Live Similarity requires the 3D design data to be indexed. During indexation, a 3D signature is computed for each shape. This is the signature that is used to compare shapes and find similarity. This 3D signature is computed with a proprietary Dassault Systèmes algorithm and describes the 3D geometry in detail. This signature is then used to compare geometries and classify them into an index that will allow fast search and result display.

ENOVIA Live Similarity works only with CATIA V6 data indexed with ENOVIA VPM® Central™ (VPM).

Key Customer Benefits

- Increase productivity and speed up design engineering by viewing and choosing part substitutions in a 3D environment
- Reduce duplicate parts and associated costs by identifying quickly similar parts
- Bring products to market faster by instantly checking part substitutions for design feasibility



The Role of ENOVIA V6 and PLM 2.0

ENOVIA Live Similarity supports PLM 2.0, product lifecycle management online for everyone, and the ENOVIA V6 values: global collaboration innovation, single PLM platform for intellectual property (IP) management, online creation and collaboration, ready to use PLM business processes, and lower cost of ownership.

About Dassault Systèmes

As a world leader in 3D and Product Lifecycle Management (PLM) solutions, Dassault Systèmes brings value to more than 115,000 customers in 80 countries. A pioneer in the 3D software market since 1981, Dassault Systèmes develops and markets PLM application software and services that support industrial processes and provide a 3D vision of the entire lifecycle of products from conception to maintenance to recycling. The Dassault Systèmes portfolio consists of CATIA for designing the virtual product — SolidWorks for 3D mechanical design — DELMIA for virtual production — SIMULIA for virtual testing — ENOVIA for global collaborative lifecycle management, and 3DVIA for online 3D lifelike experiences. Dassault Systèmes' shares are listed on Euronext Paris (#13065, DSY.PA) and Dassault Systèmes' ADRs may be traded on the US Over-The-Counter (OTC) market (DASTY). For more information, visit 3ds.com.

About ENOVIA

ENOVIA is the recognized leader in delivering collaborative PLM solutions. We enable companies from a broad range of industries to dramatically accelerate innovation, time-to-market and revenue generation by collaboratively developing, building and managing products. Our solutions facilitate the sharing of concepts, content and context across product lifecycles and throughout value chains of employees, customers, suppliers and partners.

ENOVIA collaborative PLM solutions help global enterprises bring together people, processes, content and systems to achieve a compelling competitive advantage. Our interoperable solutions unify and streamline processes across the product lifecycle, enabling companies to easily and cost-effectively work on projects within and outside of their enterprises. Our adaptable, scalable technology is built to accommodate the ever-changing marketplace. For more information, visit enovia.com.



For additional information, contact us at:

Dassault Systèmes Enovia Corp., 900 Chelmsford Street, Lowell, Massachusetts 01851
978 442 2500 • ENOVIA.com • 3DS.com