



## ENOVIA Collaborative Design for Zuken CR-5000

### Product Objective

ENOVIA® Collaborative Design for Zuken CR-5000 enables companies to accelerate product development and delivery by allowing designers to share information regarding their electrical designs easily throughout the product life cycle. The product facilitates concurrent printed circuit board (PCB) design, resulting in fewer engineering changes, shorter development times, and lower production costs. This product is integrated with System Designer, Board Designer, and Board Producer.

### Product Overview

Ensuring that the right design data are being properly shared and managed across the value chain—a company's suppliers, partners and customers—is vital to a company's ability to bring products to market quickly and correctly the first time. In Printed Circuit Board (PCB) designs, this effort is complicated by several factors including that electronic designs are growing exponentially in complexity (creating several gigabytes of data) and that corporations have geographically dispersed design teams across multiple time zones. As design and manufacturing functions continue to occur outside the walls of an organization, it is increasingly critical that all members contributing to the PCB design process have full access to the most recent design data, when they need it, and wherever they are located. ENOVIA Collaborative Design for Zuken CR-5000 allows PCB development teams to collaborate during the board design process, and to collect, track, protect and deliver product design information seamlessly across ECAD (Electronic Computer Aided Design) systems and other enterprise applications.

ENOVIA Collaborative Design for Zuken CR-5000 provides a simple, yet secure, workgroup and enterprise data management system that integrates directly into ECAD design environments, allowing a designer to easily share electronic design data with other designers, enterprise users and partners. The product facilitates concurrent PCB design resulting in fewer engineering changes, shorter development times and lower production costs. With this product, schematic and layout designers can work concurrently on either the same design while keeping design databases synchronized (i.e. components, connectivity, properties, etc) or on different hierarchical blocks of the schematic design, independently revising their designs in the same project.

ENOVIA Collaborative Design for Zuken CR-5000 is intended to work with ENOVIA® Designer Central™ in order to create a collaborative environment for managing design data from multiple ECAD and/or MCAD (Mechanical Computer Aided Design) tools. With ENOVIA Designer Central, the Zuken CR-5000 users are able to:

- Independently manage various aspects of the design facilitating collaboration, including:
  - The entire schematic hierarchy
  - The PCB layout
  - The panel design
  - The project directory
- Create derived outputs (i.e. manufacturing data automatically generated by the ECAD application)
- Manage design variants as defined in the ECAD application, each with its own derived outputs
- Manage annotation files for the purpose of collaboration with the PCB layout.
- Assign the design to workspace folders to facilitate collaboration
- Synchronize attributes between the design and the CAD model in ENOVIA

### ENOVIA Collaborative Design for Zuken CR-5000 and ENOVIA Designer Central help companies:

- Decrease the time to develop PCBs by enabling concurrent schematic and layout design.
- Manage complex design projects by enabling team-based schematic design using hierarchical design methodology.
- Reduce the number of design iterations by enabling enterprise collaboration throughout the design process between electrical and mechanical designers, purchasing, manufacturing, and partners.
- Reduce scrap and re-work costs by minimizing data transfer errors between engineering and manufacturing.
- Reduce ramp up production lead times by providing component information to your supply chain earlier in the development process through preliminary BOMs.

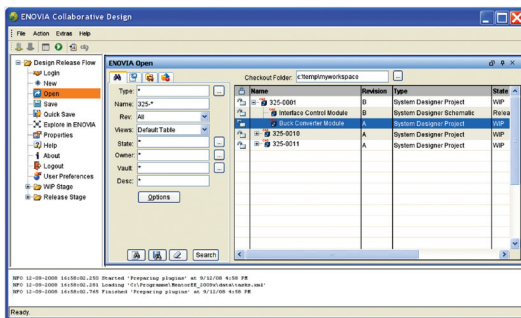


## Product Highlights

ENOVIA Collaborative Design for Zuken CR-5000 Design enables electronic designers to collaborate on complex designs as well as share design information with the extended enterprise thereby shortening development times, reducing design errors, and introducing products to market faster.

### Concurrent Design PCB Schematic and Layout

Schematic and layout designers have the freedom to work concurrently to shorten development times. As changes are made to the schematic and layout, synchronization is accomplished through forward and backward annotation files that can be accessed through shared workspace folders in ENOVIA. Subscriptions allow the layout designer to be notified when the schematic design is checked-in by the logic designer. The relationships between schematics and layout are maintained so traceability is never lost even when working with third party designers.



### Manage Team-Based Hierarchical Schematics

Top-down design methodology enables several designers to work concurrently on complex PCB projects. In this method, a PCB design is divided into logical, manageable blocks, and each

team member is allocated a block to capture and verify. ENOVIA Collaborative Design for Zuken CR-5000 manages block-based designs within the same project. Project managers have visibility into multi-level and multi-page designs and can assign team members to implement the functionality underlying each block.

### Flexible Design and Variant Configuration Management

ENOVIA Collaborative Design for Zuken CR-5000 enables better control of design data through check-in and check-out of electrical design data and flexible configuration management. The product also supports unlimited board assembly variants without having to maintain duplicate schematics or manually edit Bills of Material (BOMs). This ensures there is one source of the truth for manufacturing.

### BOM Management and Derived Outputs

BOMs can be generated automatically anytime during the design process for review by designers, procurement and component engineers to estimate cost, part status, and availability. This BOM can then be made available to users of ENOVIA® Engineering Central™ to create markups and add comments of proposed changes. Once approved, BOM markups can be applied to an Engineering Change Order (ECO) to implement the change automatically. Derived outputs such as netlists, drawing plots, milling data, artwork, drill data, and other manufacturing information can be generated automatically and stored with the design.

### The Role of ENOVIA V6 and PLM 2.0

ENOVIA Collaborative Design for Zuken CR-5000 supports PLM 2.0, product lifecycle management online for everyone, and the ENOVIA V6 values: global collaboration innovation, single PLM platform for intellectual property (IP) management, online creation and collaboration, ready to use PLM business processes, and lower cost of ownership.

### About ENOVIA

ENOVIA is the recognized leader in delivering collaborative PLM solutions. We enable companies from a broad range of industries to dramatically accelerate innovation, time-to-market and revenue generation by collaboratively developing, building and managing products. Our solutions facilitate the sharing of concepts, content and context across product lifecycles and throughout value chains of employees, customers, suppliers and partners.

ENOVIA collaborative PLM solutions help global enterprises bring together people, processes, content and systems to achieve a compelling competitive advantage. Our interoperable solutions unify and streamline processes across the product lifecycle, enabling companies to easily and cost-effectively work on projects within and outside of their enterprises. Our adaptable, scalable technology is built to accommodate the ever-changing marketplace.

### About Dassault Systèmes

As world leader in 3D and Product Lifecycle Management (PLM) solutions, the Dassault Systèmes group brings value to more than 90,000 customers in 80 countries. A pioneer in the 3D software market since 1981, Dassault Systèmes develops and markets PLM application software and services that support industrial processes and provide a 3D vision of the entire life cycle of products from conception to maintenance. Our offering includes integrated PLM solutions for product development (CATIA®, DELMIA®, ENOVIA®, SMARTEAM®), mainstream product 3D design tools (SolidWorks®), 3D components (Spatial/ACIS®) and SIMULIA®, DS' open scientific platform for realistic simulation. Dassault Systèmes is listed on the Euronext Paris (#13065, DSY.PA) stock exchange. For more information, visit 3ds.com.



For additional information, contact us at:  
Dassault Systèmes Enovia Corp. 900 Chelmsford Street, Lowell, Massachusetts 01851  
978 442 2500 • ENOVIA.com • 3DS.com