



ENOVIA Component Central™

Product Objective

ENOVIA® Component Central™ identifies and manages reusable components in order to reduce costs when defining the approved vendor and manufacturer lists (AVL and AML) for the enterprise bill-of-material (BOM).

Product Overview

Using a single, enterprise-wide repository, ENOVIA Component Central manages all facets of component information, including technical and supply chain attributes. With ENOVIA Component Central, component administrators can create and manage new components from commercial catalogs (manufacturer/supplier items) or promote existing enterprise parts for enterprise-wide reuse.

ENOVIA Component Central uses its standard classification taxonomy to organize and classify all components (commercial and enterprise). This taxonomy enables sophisticated parametric search and a simpler component selection process during product design. ENOVIA Component Central manages multiple levels of qualification and approval of components based on location or project to ensure accurate and timely information for engineers while building bills of materials (BOMs).

Product Highlights

ENOVIA Component Central has the following key capabilities:

Single Source for Components

With ENOVIA Component Central, companies can define and manage all components throughout the company in a centralized repository that provides users timely and accurate access to information. ENOVIA Component Central comes with a comprehensive schema (data model) to manage all facets of a component such as its manufacturer information, supplier information, specifications, cross-reference relationship information, alternate parts, notes and attachments. Engineers can easily access a component to use in a design while defining the AVL and AML for enterprise BOMs.

Manage Organizations

When managing components, it is important to capture the suppliers and manufacturers that provide those components and the internal organizations that consume them. With ENOVIA Component Central, companies can create and manage these organizations and their relationship with components. Component Administrators can create a new organization or modify an existing organization. They can add or modify information such as company name, company code, company address, contacts, organization hierarchy, trading partners, and notes and attachments associated with the organization.

Key Customer Benefits

- Improve product quality by managing accurate and real time component information stored in a single, centralized system
- Reduce costs through the enterprise-wide reuse of preferred parts/suppliers/manufacturers across multiple programs
- Create and maintain enterprise catalogs without requiring costly data modeling or administrative knowledge of the underlying process
- Increase sourcing options and create a more accurate BOM by managing cross-reference information for components, and maintaining several supplier or manufacturer equivalent parts for a given enterprise item
- Minimize component proliferation by fully defining and controlling component approval and preferences based on commodity, consuming location, and/or supplier



Component Classification

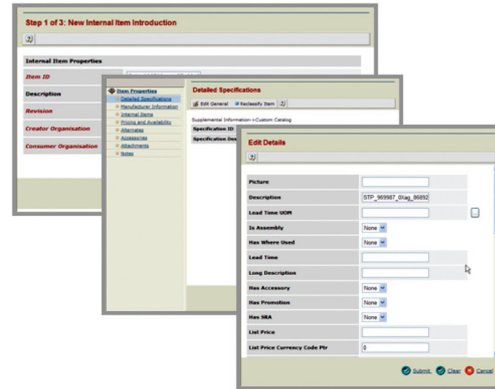
ENOVIA Component Central allows companies to organize components into various classification categories that are structured in a hierarchical manner based on common characteristics and attributes that describe components. Component administrators can add new components into a category or re-classify existing components into different categories. Structuring of components in various categories enriches the component selection process while defining a BOM.

Advanced Qualification and Approval Management

Component Administrators can use ENOVIA Component Central to fully define and control component approval and preferences based on commodity, consuming location, and/or supplier to minimize component proliferation.

The Role of ENOVIA V6 and PLM 2.0

ENOVIA Component Central supports PLM 2.0, product lifecycle management online for everyone, and the ENOVIA V6 values: global collaborative innovation, single PLM platform for intellectual property (IP) management, online creation and collaboration, ready to use PLM business processes, and lower cost of ownership.



About ENOVIA

ENOVIA is the recognized leader in delivering collaborative PLM solutions. We enable companies from a broad range of industries to dramatically accelerate innovation, time-to-market and revenue generation by collaboratively developing, building and managing products. Our solutions facilitate the sharing of concepts, content and context across product lifecycles and throughout value chains of employees, customers, suppliers and partners.

ENOVIA collaborative PLM solutions help global enterprises bring together people, processes, content and systems to achieve a compelling competitive advantage. Our interoperable solutions unify and streamline processes across the product lifecycle, enabling companies to easily and cost-effectively work on projects within and outside of their enterprises. Our adaptable, scalable technology is built to accommodate the ever-changing marketplace.

About Dassault Systèmes

As world leader in 3D and Product Lifecycle Management (PLM) solutions, the Dassault Systèmes group brings value to more than 90,000 customers in 80 countries. A pioneer in the 3D software market since 1981, Dassault Systèmes develops and markets PLM application software and services that support industrial processes and provide a 3D vision of the entire life cycle of products from conception to maintenance. Our offering includes integrated PLM solutions for product development (CATIA®, DELMIA®, ENOVIA®, SMARTEAM®), mainstream product 3D design tools (SolidWorks®), 3D components (Spatial/ACIS®) and SIMULIA®, DS' open scientific platform for realistic simulation. Dassault Systèmes is listed on the Euronext Paris (#13065, DSY.PA) stock exchange. For more information, visit 3ds.com.



For additional information, contact us at:
Dassault Systèmes Enovia Corp. 900 Chelmsford Street, Lowell, Massachusetts 01851
978 442 2500 • ENOVIA.com • 3DS.com