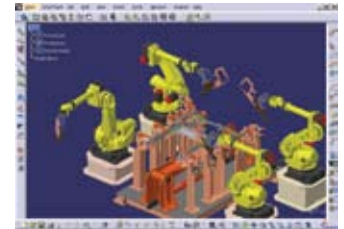


DELMIA SolidWorks Translator

Seamlessly import your SolidWorks parts and assemblies to apply Dassault Systèmes DELMIA digital manufacturing applications

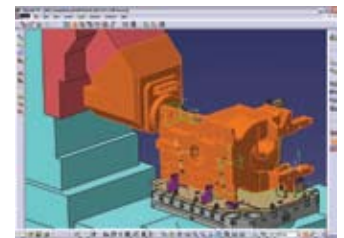
Robotics

DELMIA Robotics is a powerful, integrated solution that enables manufacturing organizations to design, simulate, optimize, and program robotic workcells in a 3D digital factory environment.



Machining and Simulation

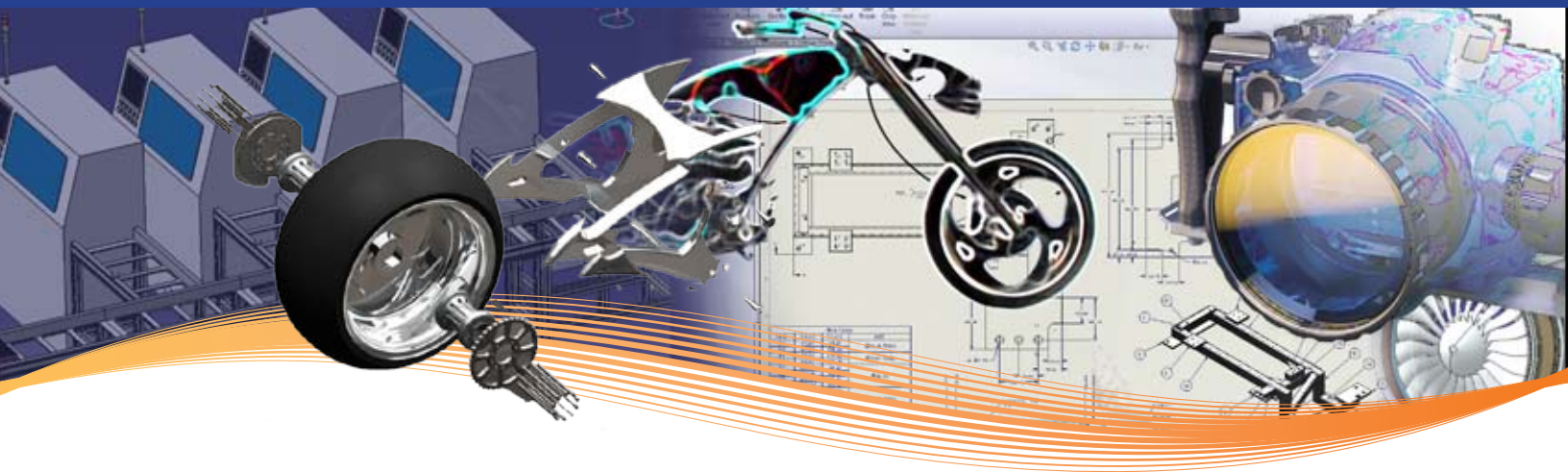
DELMIA DPM Machining seamlessly integrates product engineering and process planning in a collaborative engineering environment, enabling process designing, planning, verifying, managing, and documentation of the machining processes.



DPM Assembly

DELMIA DPM Assembly leverages and contributes to the concurrent engineering capabilities of the DS Product Lifecycle Management (PLM) solutions, providing an end-to-end solution incorporating a single, unified interface for pre-planning, detail planning, and assembly process verification.





Human Modeling

DELMIA's Virtual Ergonomics suite of digital human modeling tools are fully integrated into the DELMIA Digital Process for Manufacture (DPM) solutions. It provides such organizations with a comprehensive array of human simulation and ergonomics tools, specifically designed for understanding and optimizing the relationship between humans and the products they manufacture, install, operate, and maintain.



Automation

DELMIA Virtual Commissioning allows the debugging of the code on an actual Programmable Logic Controller (PLC) that will be on the shop floor, weeks or months before the integration of all the devices—from tooling, robots, clamps, safety devices, electrical, hydraulics and pneumatics—on the shop floor occurs.



For more information on DELMIA, visit our website at www.3ds.com/products/delmia

About Dassault Systèmes

As a world leader in 3D and Product Lifecycle Management (PLM) solutions, Dassault Systèmes brings value to more than 100,000 customers in 80 countries. A pioneer in the 3D software market since 1981, Dassault Systèmes develops and markets PLM application software and services that support industrial processes and provide a 3D vision of the entire lifecycle of products from conception to maintenance to recycling. The Dassault Systèmes portfolio consists of CATIA for designing the virtual product - SolidWorks for 3D mechanical design - DELMIA for virtual production - SIMULIA for virtual testing - ENOVIA for global collaborative lifecycle management, and 3DVIA for online 3D lifelike experiences. Dassault Systèmes' shares are listed on Euronext Paris (#13065, DSY.PA) and Dassault Systèmes' ADRs may be traded on the US Over-The-Counter (OTC) market (DASTY). For more information, visit <http://www.3ds.com>.

CATIA, DELMIA, ENOVIA, SIMULIA, SolidWorks and 3DVIA are registered trademarks of Dassault Systèmes or its subsidiaries in the US and/or other countries.

