

# 3DVIA Composer V6R2013x

## Fact Sheet

“Add a New Dimension to Your Product Communications”



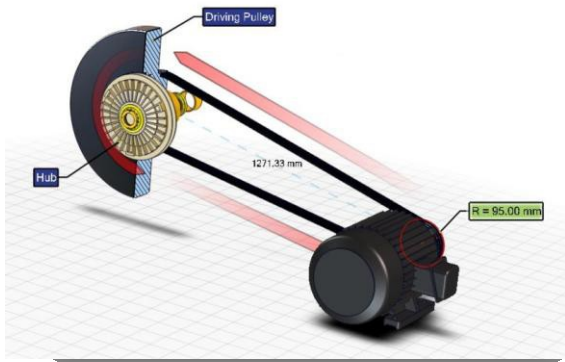
**3DEXPERIENCE**

Version 2.0 – 03.15.13

# Table of contents

- 1. 3DVIA Composer: VALUE AT A GLANCE..... 3
- 2. 3DVIA Composer: Overview..... 4
  - 2.1. Immediate Productivity with Long term Value ..... 4
  - 2.2. A complete system for maximum productivity ..... 5
    - 2.2.1. 3DVIA Composer Player ..... 6
    - 2.2.2. 3DVIA Composer Player Pro ..... 7
    - 2.2.3 3DVIA Composer Player Pro Publishing ..... 8
    - 2.2.4 3DVIA Sync and 3DVIA Enterprise Sync ..... 8
    - 2.2.5 3DVIA Check and 3DVIA Path Planning ..... 8
- 3. 3DVIA Composer: V6R2013x Key Enhancements..... 9
  - 3.1. Multi-browser Support..... 9
  - 3.2. Import Profiles .....10
  - 3.3. Select Actors Not Published to 3DVIA Studio Pro.....10
  - 3.4. 3D Tool Library.....11
  - 3.5. Measurement Enhancements.....11
  - 3.6 Polyline Enhancements .....12
  - 3.6. Rotate Mode.....12
  - 3.7. Camera Control with Keyboard Shortcuts.....13
  - 3.8. New Advanced Application Settings .....13
- 4. System Requirements.....14
  - 4.1 Supported Operating Systems.....14
  - 4.2 Supported Operating Systems for 32-bit Products .....14
  - 4.3 Supported Operating Systems for 64-bit Products.....14
- 5. Hardware Requirements for 3DVIA Composer, 3DVIA Sync and 3DVIA Enterprise Sync..15
- 6. Hardware Requirements for 3DVIA Composer Player and 3DVIA Composer Player Pro...16
- 7. File Import Requirements.....17
- 8. Software Prerequisite for 3DVIA SolidWorks Plug-In.....17
- 9. Software Prerequisites for Playing Composer Experience in 3DVIA Studio.....17

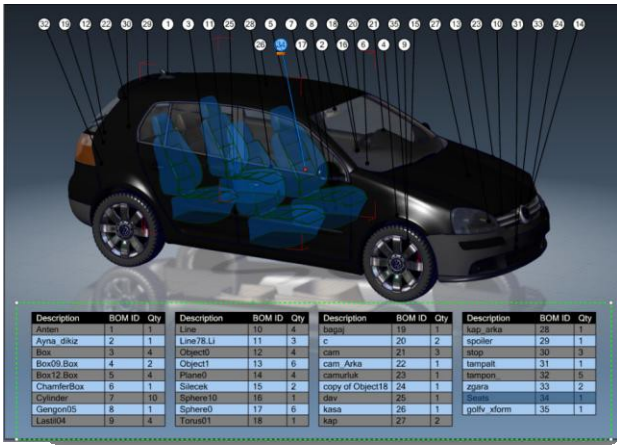
# 1. 3DVIA Composer: VALUE AT A GLANCE



Today's product developers are cutting costs, saving time, and growing their competitive advantage with 3DVIA Composer, the next generation of 3D content authoring software. A flexible and easy-to-use desktop content creation system, 3DVIA Composer streamlines the creation of product documentation and technical illustrations. For more dynamic product communication needs, 3DVIA Composer also provides a highly efficient platform for creating animated 3D assembly and maintenance instructions, and interactive marketing communications.

Based on a lightweight XML architecture, 3DVIA Composer allows non-technical users to create associative 2D and 3D product deliverables directly from CAD data. 3DVIA Composer helps lower costs and improves time to market by enabling product deliverables to be initiated earlier and updated automatically whenever designs change. By leveraging the power of interactive 3D, manufacturers can produce technical product communications that engage viewers more effectively and clearly explain complex information.

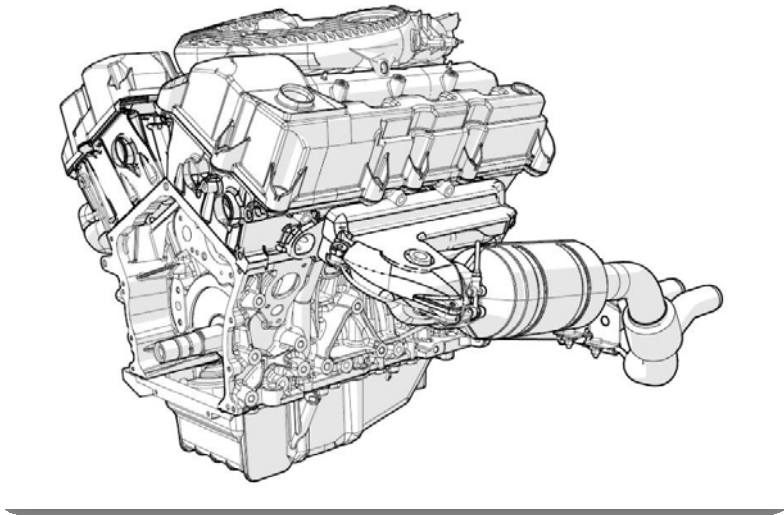
## 2. 3DVIA Composer: Overview



3DVIA Composer revolutionizes the ability for enterprises of all sizes to communicate technical product information. With its easy-to-use desktop content-creation system, 3DVIA Composer quickly and easily automates creation of technical illustrations, interactive 3D animations, assembly and disassembly procedures, training applications, sales and marketing tools, and more.

### 2.1. Immediate Productivity with Long term Value

3DVIA Composer allows non-technical users to create associative 2D and 3D product deliverables directly from digital product data.



Easy to learn and use, 3DVIA Composer is an ideal complement to content-creation tools end-users are already familiar with, such as Microsoft® Office® applications, HTML, and PDF.

3DVIA Composer ties together desktop and enterprise systems for both content consumers and content creators. Because it is an XML-based architecture, 3DVIA Composer is easily integrated with any enterprise information system, including product lifecycle management (PLM) and enterprise resource planning (ERP) applications.

## 2.2. A complete system for maximum productivity

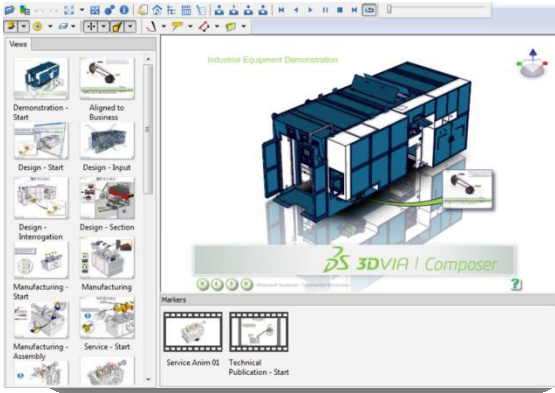
**3DVIA Composer** is easy to learn and intuitive to use. It is an ideal complement to existing content delivery tools such as Microsoft Office, PDF, and HTML. Even users inexperienced with 3D CAD applications easily create high quality 2D illustrations and interactive 3D animations to support technical product communications.

- Maximize the value of existing product 3D CAD data across the enterprise.
- Clearly communicate product intent with stakeholders during the design phase.
- Better address sales, marketing, customer service, training, support, and manufacturing product communication needs.
- Work in an intuitive authoring environment that does not require previous CAD experience.

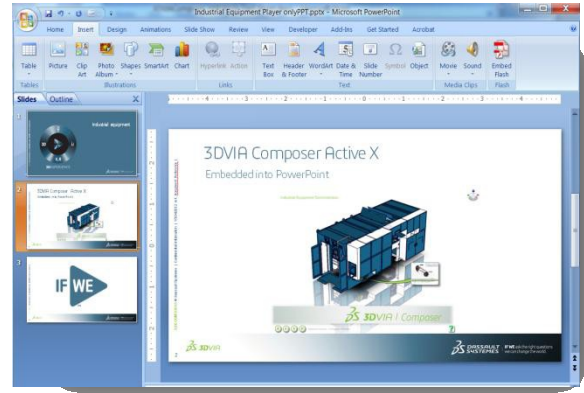
- Reduce reliance on engineers to support product deliverables.
- Communicate technical details more clearly.
- Begin creating product deliverables earlier in the design cycle.
- Deliver products to market faster.
- Keep content up to date automatically.
- Drive down production costs.
- Provide more comprehensive training materials.
- Improve customer service.
- Win new business.

### 2.2.1. 3DVIA Composer Player

**3DVIA Composer Player** a free utility, allows content creators to distribute 3DVIA Composer content to any end user with the same high performance as 3DVIA Composer. It includes an ActiveX version offering the ability to embed and control 3D interactive content anywhere in any application that supports ActiveX technology. It also includes a plug-in to Adobe Reader to enable enhanced distribution of 3DVIA Composer content within a PDF file. More robust than a simple viewer, 3DVIA Composer Player offers content consumers a highly interactive experience with product deliverables.



**3DVIA Composer Player**



**3DVIA Composer Player ActiveX**



**3DVIA Composer Player Plug-in for Adobe Reader**

## 2.2.2. 3DVIA Composer Player Pro

**3DVIA Composer Player Pro** offers a powerful API to allow users to query, manipulate, interact, and display – in real time – 3DVIA Composer content integrated with data originating from external sources. This enables the

development of 3D interactive custom applications and creates 3D product experiences anywhere the 3DVIA Composer Player ActiveX can be used.

### 2.2.3 3DVIA Composer Player Pro Publishing

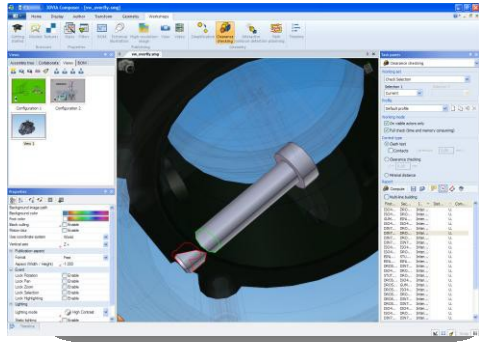
**3DVIA Composer Player Pro Publishing** provides a publishing solution for situations where a 3DVIA Composer Player Pro “Enterprise Deployment” is not possible, such as when an application is distributed via portable/removable media, web portals, or the Internet. In such cases, a "Publishing Deployment" is offered through the 3DVIA Composer Player Pro Publishing agreement and order form. The Publishing Deployment mechanism provides the licensee with a special programmatic handshake with the embedded ActiveX controls, removing the need for the end users to have a 3DVIA Composer Player Pro license.

### 2.2.4 3DVIA Sync and 3DVIA Enterprise Sync

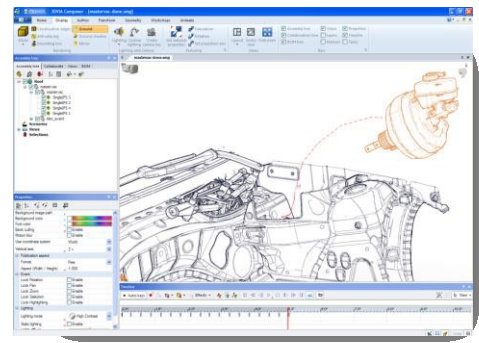
**3DVIA Sync** and **3DVIA Enterprise Sync** deliver sophisticated, XML-based associativity between 3DVIA Composer and any number of enterprise systems. 3DVIA Sync is a product to create batch conversion processes from 3D CAD and other 3D formats into the 3DVIA Composer format. It is designed to automatically incorporate design changes in geometry, meta data, and product structure directly into 3DVIA Composer content. 3DVIA Enterprise Sync offers all of the capabilities of 3DVIA Sync plus the ability to control conversions and updates through a command-line interface, so that converting, updating, and publishing 3DVIA Composer deliverables can be automated and controlled by external systems.

### 2.2.5 3DVIA Check and 3DVIA Path Planning

**3DVIA Check** and **3DVIA Path Planning** make product deliverables more useful and instructive by validating that the procedures can actually be performed in the real world. 3DVIA Check offers dynamic and static clash detection, allowing users to quickly qualify service and assembly procedures. 3DVIA Path Planning can automatically create assembly and disassembly paths for parts and subassemblies to avoid collisions with the rest of the assembly. 3DVIA Path Planning allows content creators to plan and guarantee access to components within the assembly to service or repair them.



**3DVIA Composer Check**



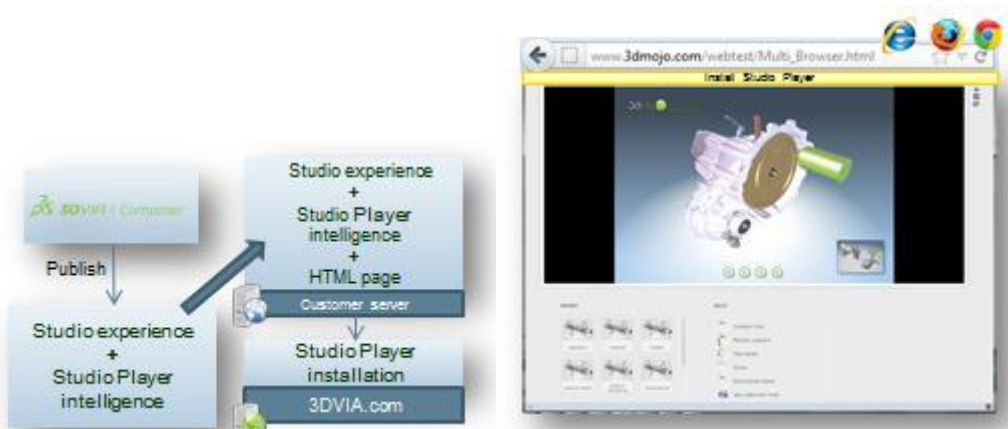
**3DVIA Composer Path Planning**

### 3. 3DVIA Composer: V6R2013x Key Enhancements

3DVIA Composer is the leading solution for creating highly effective product communications across all manufacturing industries. In V6R2013x, users benefit from new features and enhancements in publishing, import capabilities, measurement, viewing and authoring 2D and 3D product experiences.

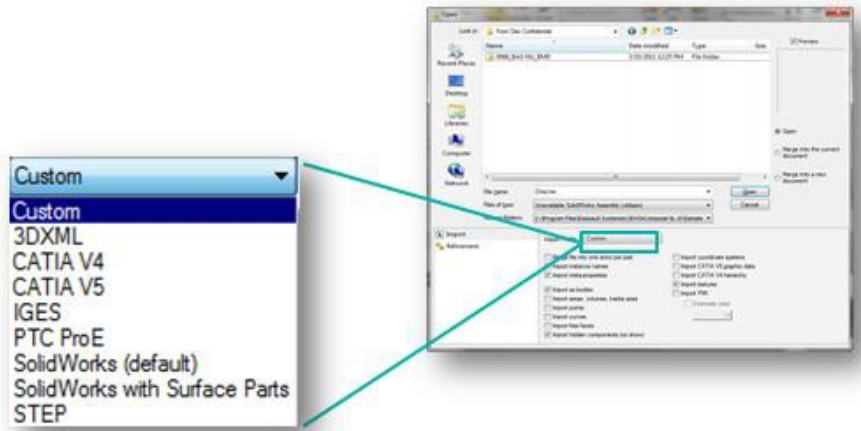
#### 3.1. Multi-browser Support

Publish rich 3DVIA Composer experiences to Internet Explorer®, Firefox®, and Safari® web browsers in 3DVIA Composer V6R2013x. Using the Publish to 3DVIA Studio feature combined with the new 3DVIA Composer Player Studio API, content creators can deliver fully interactive 3DVIA Composer applications that can be used to effectively engage an even wider audience of end users.



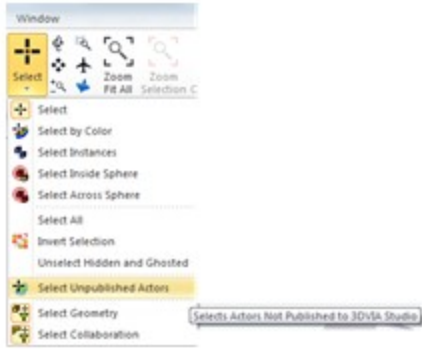
### 3.2. Import Profiles

New import profiles simplify the process of importing supported 3D CAD files into the 3DVIA Composer authoring environment. This streamlines the import process and helps eliminate potential errors that may occur when setting import options manually. For users who want to further refine import settings, a custom import profile is also available.



### 3.3. Select Actors Not Published to 3DVIA Studio Pro

When exporting 3DVIA Composer experiences into 3DVIA Studio Pro, a new tool has been added in V6R2013x that selects all collaborative actors that will not be published. With the ability to select these actors with a single command, a content author can easily make any desired adjustments (such as hiding or deleting all unsupported actors) before completing the export process.



### 3.4. 3D Tool Library

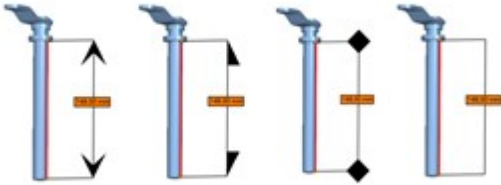
The 3DVIA Composer V6R2013x 3D Tool Library contains a collection of configurable 3D tools with predefined intelligent views that can be easily dragged and dropped into the viewport as 3D actors. 3D tool actors can be used to enrich 3DVIA Composer experiences, for example, by depicting how a hammer or a wrench should be employed for assembly operations. Using the 3D Tool Library helps instructions to be delivered more clearly while also making the content development process significantly more efficient.



### 3.5. Measurement Enhancements

Documentation specifications often dictate how measurements should be displayed. With this in mind, 3DVIA Composer V6R2013x offers users the ability to customize measurement lines with a new set of arrow head options available in the properties panel. Additionally, the process for positioning measurement labels has also been

enhanced, making it as simple as pressing the Alt key and then clicking and dragging the label into the desired location. Combined, these enhancements offer additional freedom and improved workflows for the customization of measurement lines.



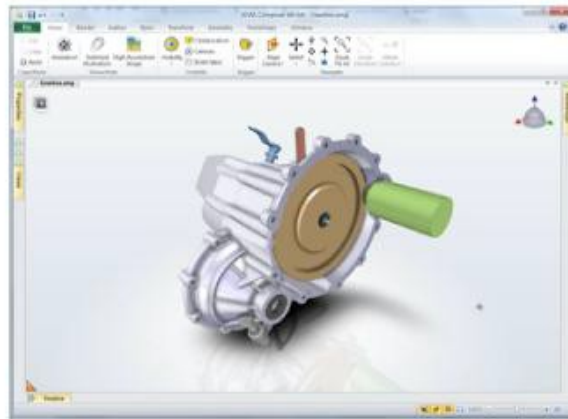
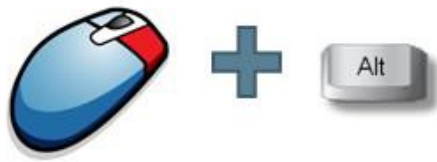
### 3.6 Polyline Enhancements

For additional flexibility in creating custom shapes, 3DVIA Composer V6R2013x now provides several new polyline properties. The Smooth property turns sharp edges into curved segments (csplines); the Close property automatically connects the first and last nodes to create a closed polyline space; and the Fill Color Opacity property allows users to define a fill color and opacity to be applied to the polyline interior. Together, these new properties make it easy to create a much wider range of custom polyline shapes inside 3DVIA Composer applications.



### 3.6. Rotate Mode

Rotating the camera to achieve the perfect angle has become even easier in 3DVIA Composer V6R2013x with the inclusion of the new Rotate Mode. Previously, the camera roll was always relative to the center of the viewport. Now camera roll can be centered on any specified point of a geometry actor.



### 3.7. Camera Control with Keyboard Shortcuts

To provide an even more ideal user experience, 3DVIA Composer now offers the ability to control cameras using keyboard shortcuts. These shortcuts supplement existing pan, rotate, and roll camera controls by allowing these movements to be made without the use of a mouse.



### 3.8. New Advanced Application Settings

The V6R2013x release includes two new application settings that can be used to further refine 3DVIA Composer experiences.

- ▶ IOSpatialUseACISModeler: Improve the visualization of construction lines for CATIA V4 models in Technical Render Mode and Smooth with Outline Render Mode.
- ▶ CuttingLinesPrecision: Specify the geometry simplification factor, which manages how cutting lines are displayed.

## 4. System Requirements

### 4.1. Supported Operating Systems

- 32-bit installations of 3DVIA Composer products are no longer supported on 64-bit operating systems.
- Note: With 64-bit installations, the 3DVIA Composer Player ActiveX and the 3DVIA Composer Player are installed in 32-bit as well as 64-bit, and the Adobe Reader plug-in is installed in 32-bit.

Prior to performing installations of **3DVIA Composer products**, you need to:

- Install the latest Windows service pack (<http://www.microsoft.com>) for your operating system.
- Install the latest driver available for your video card.

### 4.2. Supported Operating Systems for 32-bit Products

All **32-bit** 3DVIA Composer products support the following operating systems:

- Microsoft Windows XP 32-bit
- Microsoft Windows Vista 32-bit
- Microsoft Windows Server 2003 32-bit
- Microsoft Windows Server 2008 32-bit
- Microsoft Windows 7 32-bit

### 4.3. Supported Operating Systems for 64-bit (x64 Edition) Products

All **64-bit (x64 Edition)** 3DVIA Composer products support the following operating systems:

- Microsoft Windows XP 64-bit
- Microsoft Windows Vista 64-bit
- Microsoft Windows Server 2003 64-bit
- Microsoft Windows Server 2008 64-bit
- Microsoft Windows 7 64-bit

## 5. Hardware Requirements for 3DVIA Composer, 3DVIA Sync and 3DVIA Enterprise Sync

The table below lists the recommended and minimum hardware requirements for 3DVIA Composer, 3DVIA Sync and 3DVIA Enterprise Sync:

Hardware	Recommended Hardware	Minimum Hardware
<b>Disk Drive</b>	3 GB minimum free space is required to store program executables (including all importers), program data, usage environment, and paging space.	3 GB minimum free space is required to store program executables (including all importers), program data, usage environment, and paging space.
<b>Network Adaptor</b>	An active Ethernet adaptor is required for licensing purposes.	An active Ethernet adaptor is required for licensing purposes.
<b>Processor</b>	Intel® Core™ 2 Duo (or similar)	Intel Pentium® 4 (or similar)
<b>Memory (RAM)</b>	2 GB	512 MB
<b>Keyboard</b>	A specific keyboard compatible with the selected installation locale might be required for national language support.	A specific keyboard compatible with the selected installation locale might be required for national language support.
<b>Display</b>	Recommended resolution for Windows® workstations is 1280x1024. 16-bit color or higher graphics mode required, with 32-bit color recommended.	Recommended resolution for Windows workstations is 1280x1024. 16-bit color or higher graphics mode required, with 32-bit color recommended.
<b>Graphics Adaptor</b>	A graphics adapter with 3D OpenGL acceleration is required for optimal performance. AMD (AMD FirePro™) and NVIDIA (NVIDIA Quadro® FX) are highly recommended. OpenGL 3.2 or higher is required for some advanced rendering effects.	A graphics adapter with 3D OpenGL acceleration is recommended to ensure performance. AMD and NVIDIA are recommended. Frame rates and interactivity will be significantly reduced if no acceleration is available.
<b>Pointing Device</b>	A 3-button mouse is recommended for usability reasons.	A 3-button mouse is recommended for usability reasons.
<b>Optional Components and Features</b>	SpaceTraveler™, SpaceNavigator™, SpaceExplorer™, SpaceBall™, and SpaceMouse™ from 3Dconnexion® can be used, in addition to the mouse, to perform graphic manipulations (zoom, pan, rotate, etc.). Necessary drivers are delivered with the device.	SpaceTraveler, SpaceNavigator, SpaceExplorer, SpaceBall, and SpaceMouse from 3Dconnexion can be used, in addition to the mouse, to perform graphic manipulations (zoom, pan, rotate, etc.). Necessary drivers are delivered with the device.

## 6. Hardware Requirements for 3DVIA Composer Player and 3DVIA Composer Player Pro

The table below lists the recommended and minimum hardware requirements for 3DVIA Composer Player and 3DVIA Composer Player Pro:

Hardware	Recommended Hardware	Minimum Hardware
<b>Disk Drive</b>	50 MB minimum free space is required to store program executables (.exe, .ocx, Adobe Reader <sup>®</sup> plug-in), program data, usage environment, and paging space.	50 MB minimum free space is required to store program executables (.exe, .ocx, Adobe Reader plug-in), program data, usage environment, and paging space.
<b>Network Adaptor</b>	An active Ethernet adapter is required for licensing purposes (Player Pro only).	An active Ethernet adapter is required for licensing purposes (Player Pro only).
<b>Processor</b>	Intel Core 2 Duo (or similar)	Intel Pentium 4 (or similar)
<b>Memory (RAM)</b>	2 GB	512 MB
<b>Keyboard</b>	A specific keyboard compatible with the selected installation locale might be required for national language support.	A specific keyboard compatible with the selected installation locale might be required for national language support.
<b>Display</b>	Recommended resolution for Windows workstations is 1280x1024. 16-bit color or higher graphics mode required, with 32-bit color recommended.	Recommended resolution for Windows workstations is 1280x1024. 16-bit color or higher graphics mode required, with 32-bit color recommended.
<b>Graphics Adaptor</b>	A graphics adapter with 3D OpenGL acceleration is required for optimal performance. AMD (AMD FirePro) and NVIDIA (NVIDIA Quadro FX) are highly recommended.  OpenGL 3.2 or higher is required for some advanced rendering effects.	A graphics adapter with 3D OpenGL acceleration is recommended to ensure performance. AMD and NVIDIA are recommended. Frame rates and interactivity will be significantly reduced if no acceleration is available.
<b>Pointing Device</b>	A 3-button mouse is recommended for usability reasons.	A 3-button mouse is recommended for usability reasons.
<b>Optional Components and Features</b>	SpaceTraveler, SpaceNavigator, SpaceExplorer, SpaceBall, and SpaceMouse from 3Dconnexion can be used, in addition to the mouse, to perform graphic manipulations (zoom, pan, rotate, etc.). Necessary drivers are delivered with the device.	SpaceTraveler, SpaceNavigator, SpaceExplorer, SpaceBall, and SpaceMouse from 3Dconnexion can be used, in addition to the mouse, to perform graphic manipulations (zoom, pan, rotate, etc.). Necessary drivers are delivered with the device.

## 7. File Import Requirements

Depending on the file formats you import into 3DVIA Composer, 3DVIA Sync or 3DVIA Enterprise Sync, different requirements might apply. For example, if you import SolidWorks® files, you must satisfy the minimum requirements for your version of SolidWorks (see <http://www.solidworks.com/sw/support/SystemRequirements.html>).

## 8. Software Prerequisite for 3DVIA SolidWorks Plug-in

The software prerequisites for 3DVIA SolidWorks Plug-in are as follows:

- SolidWorks 32-bit is required for 3DVIA SolidWorks Plug-in 32-bit.
- SolidWorks 64-bit is required for 3DVIA SolidWorks Plug-in 64-bit.

## 9. Software Prerequisite for Playing Composer Experience in 3DVIA Studio

3DVIA Studio 2.14.398 (V6R2013 FD01) or later is required to play a 3DVIA Composer experience published to 3DVIA Studio.

**Note:** For more information on 3DVIA Studio, see <http://www.3dvia.com/studio/>.