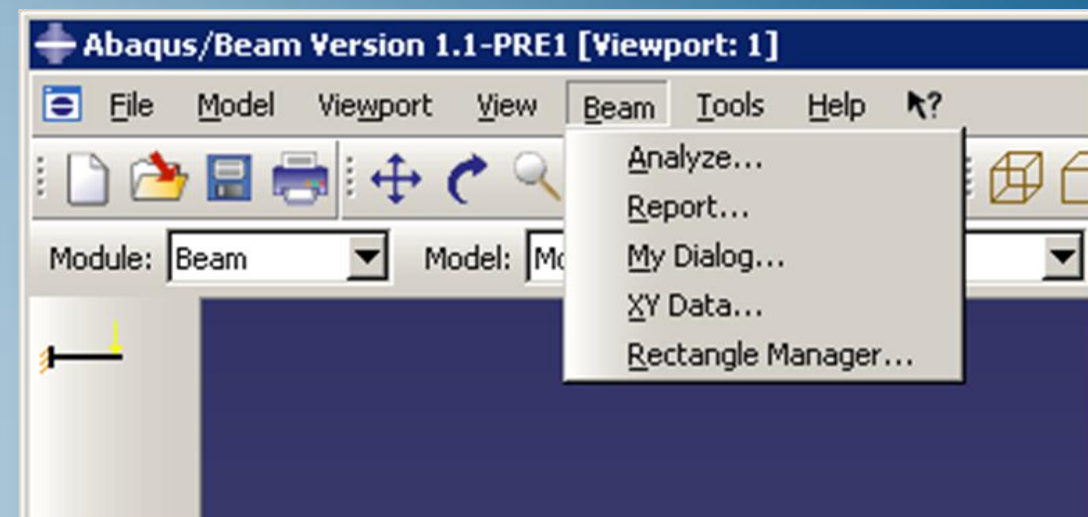


# GUI Customization with Abaqus

Abaqus 2018



**3DEXPERIENCE®**



# About this Course

## Course objectives

The goal of this course is to train you to use the Abaqus GUI Toolkit to customize the Abaqus/CAE interface or build your own applications

- ▶ Learn how to build dialogs and issue commands from the GUI
- ▶ Learn how to create and modify GUI modules and toolsets
- ▶ Learn how to create custom applications

## Targeted audience

Users interested in modifying and extending the capabilities of Abaqus by customizing their Abaqus interface

## Prerequisites

This seminar assumes prior knowledge of the Python programming language and the Abaqus kernel commands. Thus, students *must* attend the Introduction to Abaqus Scripting seminar prior to attending this class. Experience with object-oriented programming and GUI toolkits is recommended, but not required.



3 days

# Day 1

---

- ▶ Lecture 1      GUI Toolkit Introduction
- ▶ Lecture 2      Widget Library
  - Workshop 1    Creating Widgets
- ▶ Lecture 3      Layout Managers
  - Workshop 2    Using Layout Managers
- ▶ Lecture 4      Dialogs
- ▶ Lecture 5      GUI Messaging
  - Workshop 3    Message Handling
- ▶ Lecture 6      Commands and Keywords (Part 1)
  - Workshop 4    Using GUI Commands and Keywords (Part 1)

## Day 2

---

- ▶ Lecture 7            Commands and Keywords (Part 2)
- ▶ Lecture 8            Modes (Part 1)
  - Workshop 5    Using GUI Commands and Keywords (Part 2)
- ▶ Lecture 9            Modes (Part 2)
  - Workshop 6    Modes Processing
  - Workshop 7    Procedures
- ▶ Lecture 10           Modules and Toolsets
- ▶ Lecture 11           Building Applications
  - Workshop 8    Creating an Application
  - Workshop 9    Additional Exercises

## Day 3

---

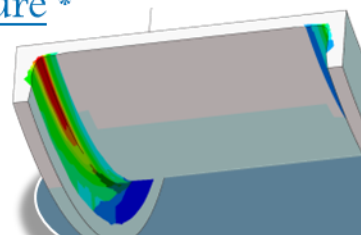
- ▶ Lecture 12      Other Topics
  - Workshop 10    Using customData
- ▶ Wrap up      Finish workshops  
Consulting for company-specific applications

# SIMULIA

- ▶ SIMULIA is the Dassault Systèmes brand for Realistic Simulation solutions
- ▶ Portfolio of established, best-in-class products
  - Abaqus, Isight, Tosca, fe-safe, Simpack

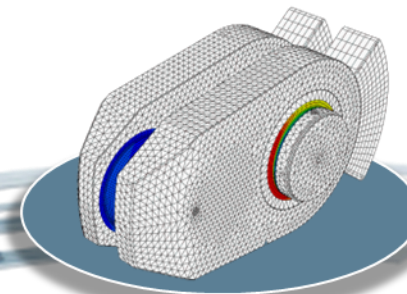
## Design Optimization: Tosca Structure \*

Simulation-driven design refinement to improve performance



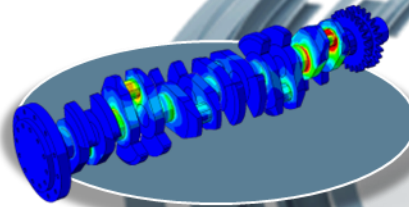
## Durability Assessment: fe-safe \*

Accurate life estimation to achieve certification



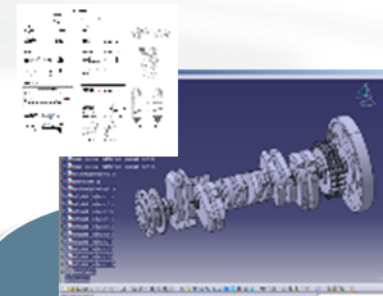
## FEA Stress Analysis: Abaqus \*

Detailed stress analysis using extracted load history from MBS



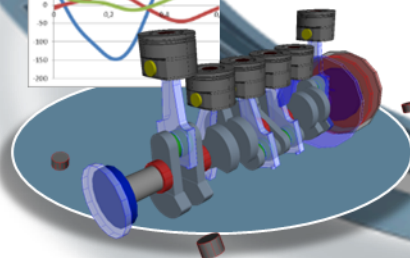
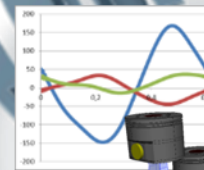
## CAD Geometry: CATIA

Fully parameterized 3D geometry; FEA model generation via associative interface



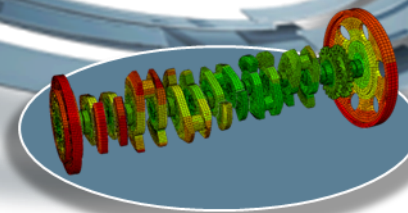
## Multibody Simulation: Simpack

System analysis to extract virtual load history of complete working cycle



## Mesh Calibration: Isight \*

Automated mesh calibration; sufficient mesh quality for accurate results



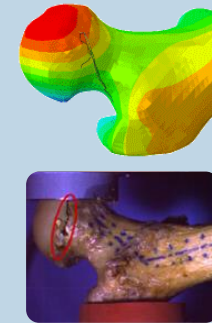
\* Included in extended licensing pool



# SIMULIA's Power of the Portfolio

## Abaqus

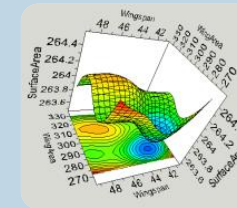
- Routine and Advanced Simulation
- Linear and Nonlinear, Static and Dynamic
- Thermal, Electrical, Acoustics
- Extended Physics through Co-simulation
- Model Preparation and Visualization



**Realistic Human Simulation  
High Speed Crash & Impact  
Noise & Vibration**

## Isight

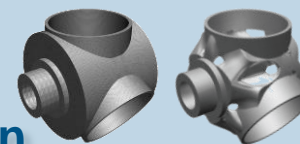
- Process Integration
- Design Optimization
- Parametric Optimization
- Six Sigma and Design of Experiments



**Material Calibration  
Workflow Automation  
Design Exploration**

## Tosca

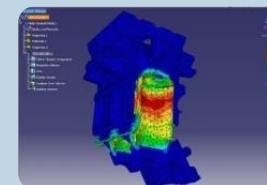
- Non-Parametric Optimization
- Structural and Fluid Flow Optimization
- Topology, Sizing, Shape, Bead Optimization



**Conceptual/Detailed Design  
Weight, Stiffness, Stress  
Pressure Loss Reduction**

## fe-safe

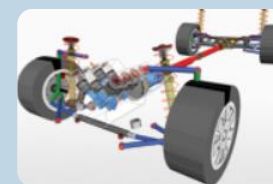
- Durability Simulation
- Low Cycle and High Cycle Fatigue
- Weld, High Temperature, Non-metallics



**Safety Factors  
Creep-Fatigue Interaction  
Weld Fatigue**

## Simpack

- 3D Multibody Dynamics Simulation
- Mechanical or Mechatronic Systems
- Detailed Transient Simulation (Offline and Realtime)



**Complete System Analyses  
(Quasi-)Static, Dynamics, NVH  
Flex Bodies, Advanced  
Contact**

# Join the Community!

How can you maximize the robust technology of the SIMULIA Portfolio ?

Connect with peers to share knowledge and get technical insights

Go to [www.3ds.com/slc](http://www.3ds.com/slc)  
to log in or join!



 **SIMULIA**

Let the **SIMULIA Learning Community** be *Your* Portal to 21<sup>st</sup> Century Innovation








Discover new ways to explore how to leverage realistic simulation to drive product innovation. Join the thousands of Abaqus and Isight users who are already gaining valuable knowledge from the SIMULIA Learning Community.







For more information and registration, visit [3ds.com/simulia-learning](http://3ds.com/simulia-learning).  
**Connect. Share. Spark Innovation.**

 **DASSAULT  
SYSTEMES** | The **3DEXPERIENCE** Company




<http://www.3ds.com/products-services/simulia/services/training-courses/>

**SIMULIA****SERVICES****TRAINING COURSES****SCHEDULE & REGISTRATION**



## SIMULIA SERVICES


PROVIDING HIGH QUALITY SIMULATION AND TRAINING SERVICES TO  
ENABLE OUR CUSTOMERS TO BE MORE PRODUCTIVE AND  
COMPETITIVE.

[CONTACT SALES](#) 

### Training Schedule & Registration


We offer regularly scheduled public seminars as well as training courses at customer sites. An extensive range of courses are available, ranging from basic introductions to advanced courses that cover specific analysis topics and applications. On-site courses can be customized to focus on topics of particular interest to the customer, based on the customer's prior specification. To view the worldwide course schedule and to register for a course, visit the links below.

#### North American




- > By Location
- > By Course

#### International



- > By Location
- > By Course

#### Live Online Training



- > Full Schedule

## Legal Notices

---

The software described in this documentation is available only under license from Dassault Systèmes or its subsidiaries and may be used or reproduced only in accordance with the terms of such license.

This documentation and the software described in this documentation are subject to change without prior notice.

Dassault Systèmes and its subsidiaries shall not be responsible for the consequences of any errors or omissions that may appear in this documentation.

No part of this documentation may be reproduced or distributed in any form without prior written permission of Dassault Systèmes or its subsidiaries.

© Dassault Systèmes, 2017

Printed in the United States of America.

Abaqus, the 3DS logo, and SIMULIA are trademarks or registered trademarks of Dassault Systèmes or its subsidiaries in the US and/or other countries.

Other company, product, and service names may be trademarks or service marks of their respective owners. For additional information concerning trademarks, copyrights, and licenses, see the Legal Notices in the SIMULIA User Assistance.

# Revision Status

Lecture 1	11/17	Updated for Abaqus 2018
Lecture 2	11/17	Updated for Abaqus 2018
Lecture 3	11/17	Updated for Abaqus 2018
Lecture 4	11/17	Updated for Abaqus 2018
Lecture 5	11/17	Updated for Abaqus 2018
Lecture 6	11/17	Updated for Abaqus 2018
Lecture 7	11/17	Updated for Abaqus 2018
Lecture 8	11/17	Updated for Abaqus 2018
Lecture 9	11/17	Updated for Abaqus 2018
Lecture 10	11/17	Updated for Abaqus 2018
Lecture 11	11/17	Updated for Abaqus 2018
Lecture 12	11/17	Updated for Abaqus 2018

Workshop 1	11/17	Updated for Abaqus 2018
Workshop 2	11/17	Updated for Abaqus 2018
Workshop 3	11/17	Updated for Abaqus 2018
Workshop 4	11/17	Updated for Abaqus 2018
Workshop 5	11/17	Updated for Abaqus 2018
Workshop 6	11/17	Updated for Abaqus 2018
Workshop 7	11/17	Updated for Abaqus 2018
Workshop 8	11/17	Updated for Abaqus 2018
Workshop 9	11/17	Updated for Abaqus 2018
Workshop 10	11/17	Updated for Abaqus 2018

# Lesson 1: GUI Toolkit Introduction

## *Lesson content:*

- ▶ Types of Customization
- ▶ Background
- ▶ Abaqus GUI Toolkit
- ▶ Example
- ▶ Documentation and References
- ▶ Customization Services
- ▶ GUI Application Components



30 minutes

# Lesson 2: Widget Library

## *Lesson content:*

- ▶ GUI Application Overview
- ▶ Introduction
- ▶ Widgets
- ▶ Workshop Preliminaries
- ▶ Workshop 1: Creating Widgets



1.5 hours



# Lesson 3: Layout Managers

## *Lesson content:*

- ▶ GUI Application Overview
- ▶ Layout Managers
- ▶ Layout Hints
- ▶ Example
- ▶ Workshop 2: Using Layout Managers



2 hours

# Lesson 4: Dialogs

## *Lesson content:*

- ▶ GUI Application Overview
- ▶ Dialogs



30 minutes

# Lesson 5: GUI Messaging

## *Lesson content:*

- ▶ Messaging
- ▶ Workshop 3: Message Handling



1.5 hours

# Lesson 6: Commands and Keywords (Part 1)

## *Lesson content:*

- ▶ GUI Application Overview
- ▶ Data Targets
- ▶ GUI Commands and Keywords
- ▶ AFX Targets
- ▶ Using Keywords and Targets with Widgets
- ▶ Workshop 4: Using GUI Commands and Keywords (Part 1)



1.5 hours

# Lesson 7: Commands and Keywords (Part 2)

## *Lesson content:*

- ▶ GUI Application Overview
- ▶ Data Targets
- ▶ Using Keywords and Targets with Widgets



30 minutes



# Lesson 8: Modes (Part 1)

## *Lesson content:*

- ▶ GUI Application Overview
- ▶ Modes
- ▶ Form Example
- ▶ Workshop 5: Using GUI Commands and Keywords (Part 2)



1.5 hours

# Lesson 9: Modes (Part 2)

## *Lesson content:*

- ▶ GUI Application Overview
- ▶ Detailed Mode Execution
- ▶ Procedure Modes
- ▶ Procedure Example
- ▶ Workshop 6: Modes Processing
- ▶ Workshop 7: Procedures



2.5 hours

# Lesson 10: Modules and Toolsets

## *Lesson content:*

- ▶ GUI Application Overview
- ▶ Modules and Toolsets



15 minutes

# Lesson 11: Application Overview

## *Lesson content:*

- ▶ GUI Application Overview
- ▶ Applications
- ▶ The Main Window
- ▶ Customizing Abaqus/CAE
- ▶ Workshop 8: Creating an Application
- ▶ Workshop 9: Additional Exercises



3 hours

# Lesson 12: Other Topics

## *Lesson content:*

- ▶ Plug-ins
- ▶ Custom Data
- ▶ Internationalization
- ▶ Context Sensitive Help
- ▶ Miscellaneous
- ▶ Feedback
- ▶ Workshop 10: Using customData



1.5 hours