

ENOVIA Materials Compliance™ Central

Meet Global Automotive Environmental Compliance Mandates Throughout the Product Development Process

Meeting environmental compliance regulations throughout the product development process is a necessity for global companies. This is especially true for automotive manufacturers and their suppliers, who must meet the European End of Life Vehicles (ELV) Directive, the Registration, Evaluation, Authorization and Restriction of Chemicals (REACH) mandate, the Global Automotive Declarable Substance List (GADSL), and similar emerging initiatives in Asia and North America.

The multitude of environmental regulations and their ever changing complexity has prompted many companies to take a reactive stance, preferring to handle compliance reporting and analysis late in the product development cycle. However, this approach is costly if it is not integrated with all business processes in vehicle programs.

By implementing **ENOVIA Materials Compliance™ Central** as part of an overall Product Lifecycle Management (PLM) strategy, users can verify and integrate product compliance with ELV, GADSL and REACH requirements at every phase of their business processes.

ENOVIA Materials Compliance Central enables manufacturers to:

- Avoid late-stage design changes
- Explore ways of improving product designs while meeting compliance requirements
- Reduce or eliminate the use of hazardous materials and substances in products
- Minimize launch delays, recalls, fines, poor customer satisfaction or a negative public image

ENOVIA Materials Compliance Central provides companies with a competitive edge by integrating proactive environmental strategies such as “Eco-Design” (Design for the Environment) and managing supplier adherence to mandates. With ENOVIA Materials Compliance Central, companies can implement best business practices throughout the development lifecycle, including collecting, integrating, analyzing and reporting a product’s environmental compliance into the International Material Data System (IMDS).

Product development teams can check material content information from any design view, and cross-reference the data against multiple regulations. Designers can make changes early in the design process by quickly determining if components meet all the compliance standards and substance thresholds. Reports can be generated that compare the compliance of manufacturing equivalents, list recycle content, or evaluate best and worst case manufacturing location scenarios.

The ENOVIA Materials Compliance Central component library can contain the most current material compositions, ensuring that the evaluation process incorporates the latest supplier information. The result is that design engineers have the critical product information necessary when making choices based on the needs of the customer and/or market requirements. The net result is delivering innovative and environmentally compliant products that meet global market demands.

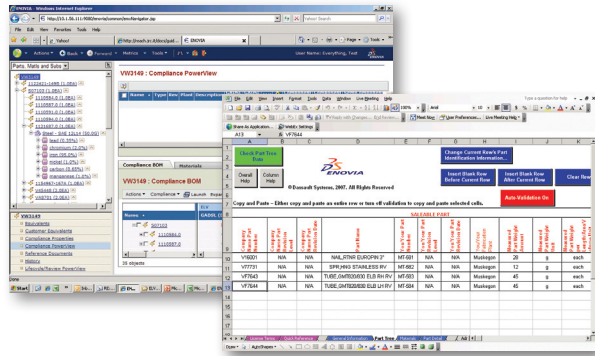
With ENOVIA Materials Compliance Central, Automotive Companies are able to:

- Manage material data to meet customer and region specific compliance mandates
- Analyze a product’s compliance throughout the product development process
- Maximize the reuse of compliant components
- Assess product and supplier impact rapidly when new restricted substances are identified
- Initiate supplier material declaration requests, monitor supplier progress and accept or reject declaration submissions
- Integrate the Supply Chain for successful collection of ELV certifications and material composition
- Securely protect IP in the reporting process, and enforce consistency
- Integrate and analyze external Bill of Material (BOM) structures
- Improve data quality by establishing a material declaration collection standard across the supply chain
- Report product compliance to customers

Features and Capabilities

Materials Data Management

Companies can manage and maintain material composition for make and buy components without disruption to design or production schedules. The management and collection of material composition helps companies assess their compliance against EU ELV, Korea ELV, GADSL, REACH, and lead-free initiatives, as well as to scale to meet other emerging global regulations.



Materials Compliance Analysis

Engineering can easily generate part-level reports to help determine compliance with customer or market specific requirements. Substance Use, Substance Threshold, Multi-Level BOM Analysis Report, and Recycled Content for Energy Using Products Directive (EuP) are a few of the pre-packaged analytic reports. Engineering can also analyze the product's compliance using what-if scenarios such as Make vs. Buy (internal vs. supply chain costs) using the Best/Worse Case Compliance Report.

Maximize the Reuse of Compliant Components

Design engineers can make component selection decisions based on the component's ELV and GADSL compliance rating. Administrators can configure these views to display other customer or region regulations such as Korea ELV, Honda, and PSA.

Security and Intellectual Property (IP) Protection

Critical IP is protected throughout the data collection and reporting process. All access to data, reports, and application functionality is role-based to provide organizations with the necessary security levels.

Assess Impact of New Restricted Substances

Advanced "where-used" capabilities allow engineers to quickly identify non-compliant components and the products that they are used in. Engineers can then leverage the extensive search capabilities to identify alternatives, or "green parts," as well as the identification of lead-free options.

Manage Supplier Material Declarations

Compliance engineers can initiate and send material declaration requests, with due dates and instructions, to its supply chain. With ENOVIA Materials Compliance, compliance engineers can monitor the supplier's progress and review, validate and approve/reject all received supplier submissions.

Integrate the Supply Chain

With ENOVIA Materials Compliance Central, supplier material declaration requests can be managed through automated e-mails, or integrated into the IMDS request process. Utilizing pre-packaged tools & reports, efficiently manage the acceptance or rejection of supplier declarations, and communicate your decisions in the same way—automated e-mails or integration to the IMDS request process.

Reduce Data Quality Errors

Collect material composition and certifications from the supply chain using industry standard formats, the AIAG Compliance Connect Spreadsheet and full support of IMDS Advanced Interface. Compliance engineers can import any declaration received via the AIAG spreadsheet or the IMDS System.

Integrate and Analyze External BOM Structures

Rule-based import and export capabilities allow compliance engineers to analyze BOM structures that are managed by external systems (e.g. ERP).

The Role of ENOVIA V6 and PLM 2.0

ENOVIA Materials Compliance Central supports PLM 2.0, product lifecycle management online for everyone; and the ENOVIA V6 key values. PLM 2.0 adopts the concepts of online communities and creation, constituting a new paradigm for product innovation. ENOVIA V6 harnesses the collaborative intelligence from diverse online communities to maximize intellectual assets, capturing and leveraging the Intellectual Property (IP) from all business and consumer users.

ENOVIA Materials Compliance Central uses V6 capabilities to bring these benefits to users:

Global Collaborative Innovation

The environmental stewardship of your organization can be quickly enhanced by providing access to material compliance information to everyone throughout the product lifecycle from new product development to manufacturing to end-of-life recycling.

Online Collaboration and Innovation

Internet availability for all stakeholders who need immediate access to material compliance data means costly queue times dissolve as real time concurrent/parallel work processes occur.

A Single PLM Platform for Intellectual Property Management

All deliverables related to collecting, integrating, analyzing, and reporting material compliance information are accomplished in a single platform and environment, eliminating translation errors and ensuring a single source of truth.

Ready to Use PLM Business Processes

Companies gain immediate value from their investment by using out-of-the-box (OOTB) processes and industry standard data collection and reporting formats.

A Lifelike Experience

Any user can find PLM information, understand others using the universal language of 3D, experience the product, and collaborate in an immersive online 3D environment.

Lower Cost of Ownership

Users can easily integrate the out-of-the-box material compliance data management functionality into existing business processes thereby creating a "Design for Environmental Compliance" culture. This adaptable business model leads to breakthrough Return on Investment (ROI). Built on a Services Oriented Architecture (SOA) platform, and based on market feedback, ENOVIA Materials Compliance Central delivers immediate financial value.



For additional information, contact us at: Dassault Systèmes ENOVIA Corp. • 900 Chelmsford Street, Lowell, Massachusetts 01851
978 442 2500 • ENOVIA.com • 3DS.com