



CAD parts libraries, electronic catalogs and product configurations for mechanical engineering

"100+ million 2D/3D CAD drawings at just a mouse click !"

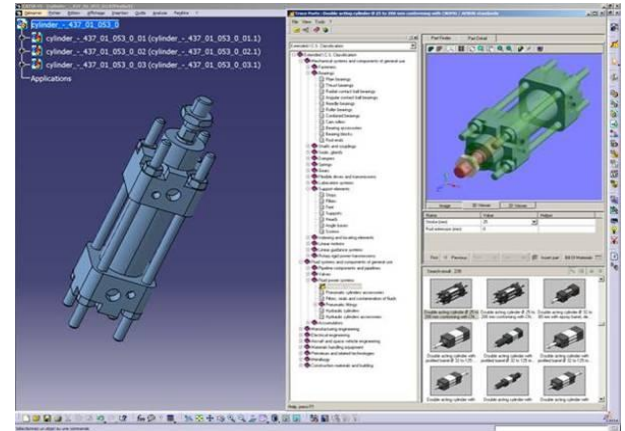
CATIA MD1



TraceParts CAA V5 Based

For CAD designers and parts manufacturers

- The only Parts Library in the world to benefit from the “Software Partner” status and to be promoted on PLM Market Place
- Seamless integration with CATIA V5: publications, threading parameters, bill of materials attributes, materials data, electrical properties for connectors
- Extensive library of commercial parts from 200+ manufacturers’ catalogs: (ASCO JOUCOMATIC NUMATICS, BOSCH, FESTO, INA, LEGRIS, SNR, TRELLEBORG...) and standards (ISO, NAAMS, NAS, MS, BS, DIN, ANSI, NF...)
> 100+ millions of components
- Powerful search engines, 3D viewer and product classifications (ISO ICS, ecl@ass, ...)



Targets

- Any industry which uses purchased parts: tooling, automotive, aerospace, machinery, ship building

Customer Benefits

- Saves time: access to off-the-shelf catalogs
- Improves quality: use of “up to date” standard parts
- Maximizes re-usability of parts

[\[Click here for Industry Legend\]](#)



Mechanical Design

